

Bridgemary Road, Bridgemary,  
Gosport, Hampshire, PO13 0UJ

OFFERS IN EXCESS  
OF £300,000



Semi Detached House

Three Good Size Bedrooms

Family Room

Ground Floor Cloakroom & Four Piece First  
Floor Bathroom

Gas Central Heating & PVCu Double  
Glazing

Extended Accommodation

Spacious Lounge/Dining Room

Kitchen With Separate Utility Room

Block Paved Driveway & Garage

No Forward Chain

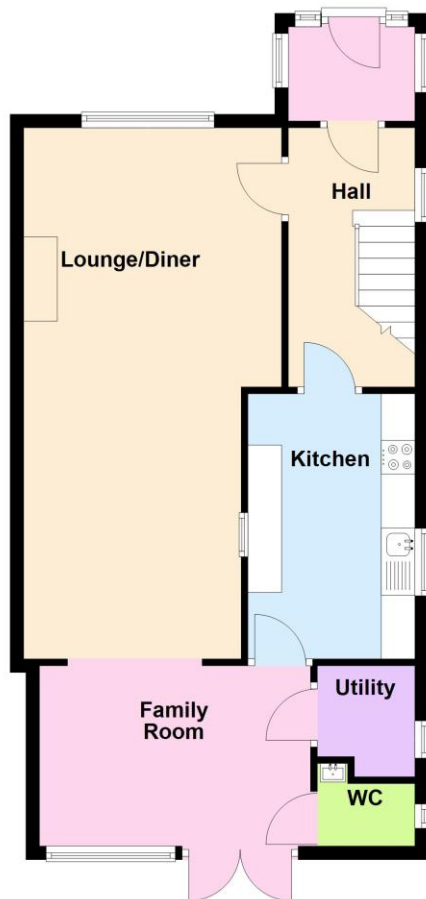
**023 9258 5588**

6 Stokesway, Stoke Road, Gosport, Hants, PO12 1PE

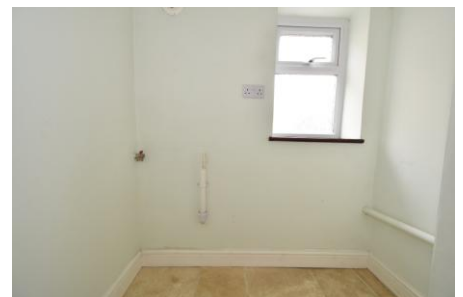
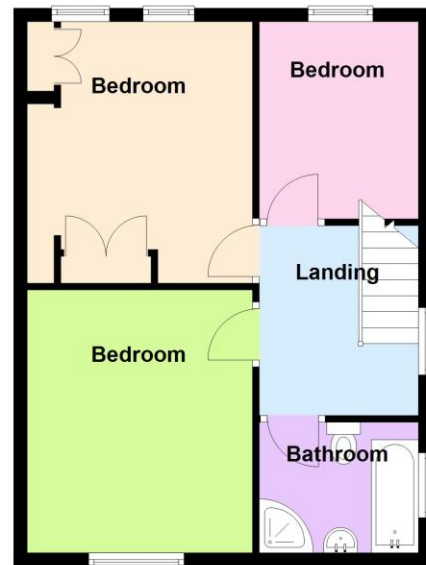
Email: [office@dimon-estate-agents.co.uk](mailto:office@dimon-estate-agents.co.uk)

To view all our properties visit:  
**[www.GosportProperty.com](http://www.GosportProperty.com)**

**Ground Floor**



**First Floor**



**SELLING YOUR OWN PROPERTY IN GOSPORT?**  
**WE ARE A FAMILY RUN BUSINESS SELLING HOMES IN GOSPORT FOR 55 YEARS**  
**AND WOULD WELCOME THE OPPORTUNITY TO BE CHOSEN AS YOUR ESTATE AGENT**

Entrance Porch	PVCu double glazed windows and front door, ceramic tiled floor, coved ceiling, PVCu double glazed inner door to:
Entrance Hall	PVCu double glazed window, radiator, stairs to first floor with spindled balustrade, meter cupboard, coved ceiling.
Lounge / Dining Room	25'11" (7.9m) x 12'6" (3.81m) narrowing to 10'7" (3.23m), PVCu double glazed bow window, 2 radiators, stone fireplace and hearth, living flame gas fire (currently capped off), coved ceiling, 2 wall lights.
Family Room	13'5" (4.09m) x 8'8" (2.64m) PVCu double glazed window and French door to garden, double radiator, coved ceiling, 3 wall lights.
Utility Room	5'4" (1.63m) x 4'1" (1.24m) Plumbing for washing machine, PVCu double glazed window, Travertine flooring, vent for dryer, coved ceiling, access to loft space.
W.C.	Low level W.C., vanity hand basin with tiled splashbacks, PVCu double glazed window, coved ceiling, medicine cabinet.
Kitchen	12'10" (3.91m) x 7'10" (2.39m) Single drainer stainless steel sink unit, white fronted wall and base units with worksurface over, gas cooker point with cooker canopy over, plumbing for dishwasher, space for fridge/freezer, tiled splashbacks, Travertine flooring, PVCu double glazed window, wall mounted gas central heating boiler, coved ceiling.
ON THE 1ST FLOOR	
Landing	Coved ceiling, access to loft space, PVCu double glazed window, spindled balustrade.
Bedroom 1	12'9" (3.89m) x 10'6" (3.2m) into wardrobe, 2 PVCu double glazed windows, radiator, fitted wardrobes.
Bedroom 2	12'9" (3.89m) x 10'8" (3.25m) PVCu double glazed window, radiator, coved ceiling.
Bedroom 3	9'8" (2.95m) x 8'0" (2.44m) With PVCu double glazed window, radiator, coved ceiling.
Bathroom	4 piece suite of panelled bath with mixer tap and shower attachment, separate shower cubicle, pedestal hand basin, low level W.C., PVCu double glazed window, chrome heated towel rail, ceramic tiled walls, laminate flooring, coved ceiling.
OUTSIDE	
Front Garden	With brick wall, laid to block paving, sideways leading to:
Detached Garage	With cantilever door, personal door to side.
Rear Garden	With lawn, patio, area laid to slate chippings.

## Services

We understand that this property is connected to mains gas, electric, water and sewage.

## Tenure

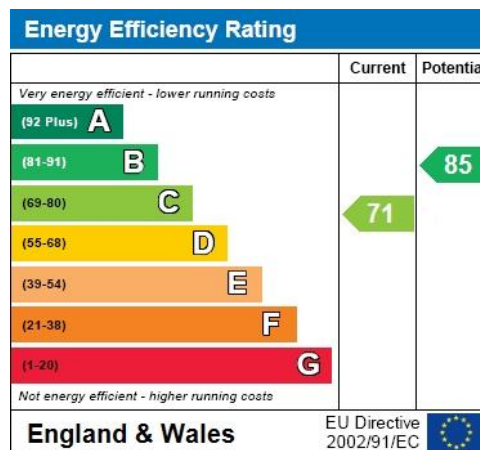
Freehold.

## Council Tax

Band B.

## Property Information

For information on broadband speed and mobile phone coverage for this property visit: <https://checker.ofcom.org.uk>



Full Energy Performance Certificate  
available upon request

These particulars, whilst believed to be accurate, are set out as a general outline for guidance and do not constitute any part of an offer or contract. Please note we have not tested any apparatus, fixtures, fittings, or services. Interested parties must undertake their own investigation into the working order of these items.

All measurements are approximate. Floor Plans are obtained from a third party and may contain inaccuracies. Photographs are for guidance only and may change over the course of marketing.

Information provided on lease terms, maintenance and ground rent have been provided by the vendor and you should ask your legal representative to confirm this information before exchanging contracts.

