

Victoria Place, Gosport,  
Hampshire, PO12 1SG

£168,000



End Of Terrace House

Spacious Kitchen

PVCu Double Glazing

Convenient to Stoke Road & Its Facilities

Two Bedrooms

First Floor Shower Room

Gas Central Heating

No Forward Chain

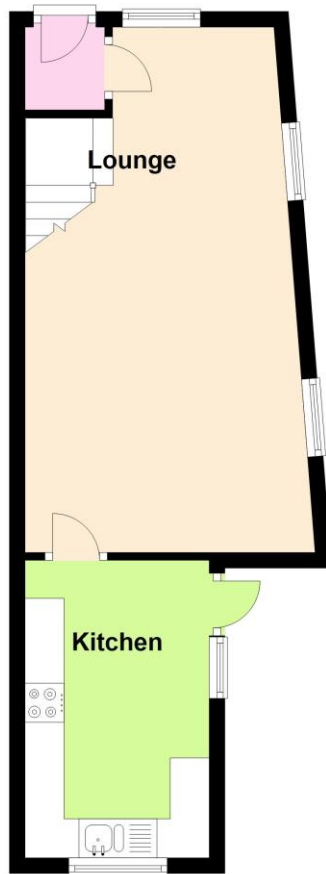
**023 9258 5588**

6 Stokesway, Stoke Road, Gosport, Hants, PO12 1PE

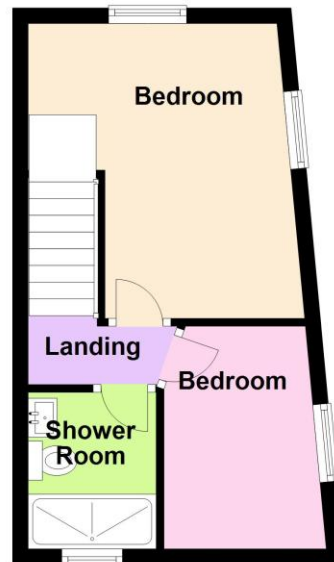
Email: [office@dimon-estate-agents.co.uk](mailto:office@dimon-estate-agents.co.uk)

To view all our properties visit:  
**[www.GosportProperty.com](http://www.GosportProperty.com)**

**Ground Floor**



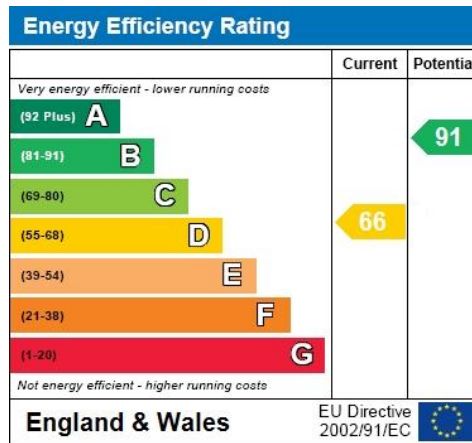
**First Floor**



**SELLING YOUR OWN PROPERTY IN GOSPORT?**

**WE ARE A FAMILY RUN BUSINESS SELLING HOMES IN GOSPORT FOR 54 YEARS  
AND WOULD WELCOME THE OPPORTUNITY TO BE CHOSEN AS YOUR ESTATE AGENT**

Entrance Porch	PVCu front door, coved ceiling, door to:
Lounge / Dining Room	22'2" (6.76m) x 11'2" (3.4m) A twin aspect room with 3 PVCu double glazed windows, radiator, electric meter cupboard and coved ceiling.
Kitchen	12'5" (3.78m) x 7'9" (2.36m) 1 ½ bowl sink unit, wall and base units with worksurface over, built in oven and 4 ring gas hob, plumbing for washing machine and dishwasher, 2 PVCu double glazed window, door to sideways, tiled splashbacks, wall mounted gas central heating boiler, space for fridge/ freezer.
ON THE 1ST FLOOR	
Landing	Access to loft space.
Bedroom 1	12'6" (3.81m) x 8'2" (2.49m) Widening to 10'7" (3.23m), 2 PVCu double glazed windows, radiator, coved ceiling.
Bedroom 2	9'4" (2.84m) x 7'2" (2.18m) PVCu double glazed window, radiator, coved ceiling.
Shower Room	6'0" (1.83m) x 4'7" (1.4m) Shower cubicle, vanity hand basin, low level W.C., tiled walls, PVCu double glazed window, extractor fan, chrome heated towel rail.
OUTSIDE	
Courtyard	With timber shed and side pedestrian gate
Services	We understand that this property is connected to mains gas, electric, water and sewage.
Tenure	Freehold.
Council Tax	Band B.
Property Information	For information on broadband speed and mobile phone coverage for this property visit: <a href="https://checker.ofcom.org.uk">https://checker.ofcom.org.uk</a>



Full Energy Performance Certificate  
available upon request

Appointment		
Date:	Time:	Person Meeting:
<p style="text-align: center; color: #00AEEF;">Viewing Notes</p>		

These particulars, whilst believed to be accurate, are set out as a general outline for guidance and do not constitute any part of an offer or contract. Please note we have not tested any apparatus, fixtures, fittings, or services. Interested parties must undertake their own investigation into the working order of these items.

All measurements are approximate. Floor Plans are obtained from a third party and may contain inaccuracies. Photographs are for guidance only and may change over the course of marketing.

Information provided on lease terms, maintenance and ground rent have been provided by the vendor and you should ask your legal representative to confirm this information before exchanging contracts.