



**26 MANSFIELD ROAD
CHESSINGTON
SURREY
KT9 2PN
£685,000**

EXTENDED END TERRACE HOUSE

FOUR BEDROOMS

27' X 18'6 MODERN KITCHEN, DINING FAMILY ROOM

BATHROOM AND EN-SUITE SHOWER ROOM

UTILITY ROOM AND STUDY/OFFICE

DOUBLE GLAZED WINDOWS

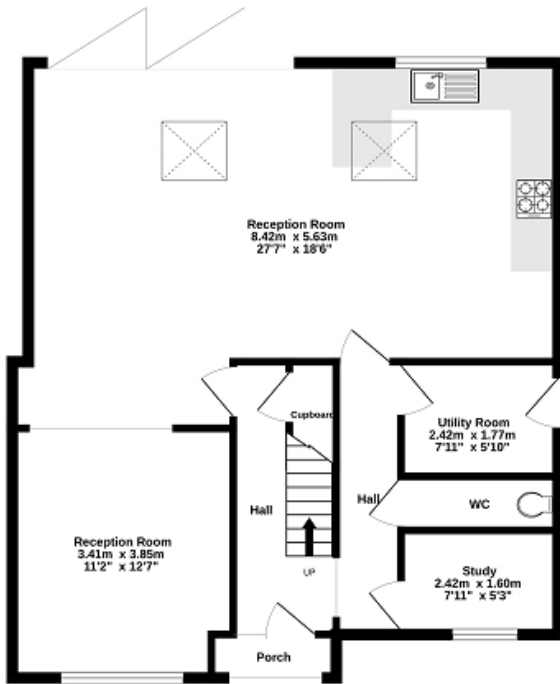
GAS CENTRAL HEATING

52' X 33' REAR GARDEN

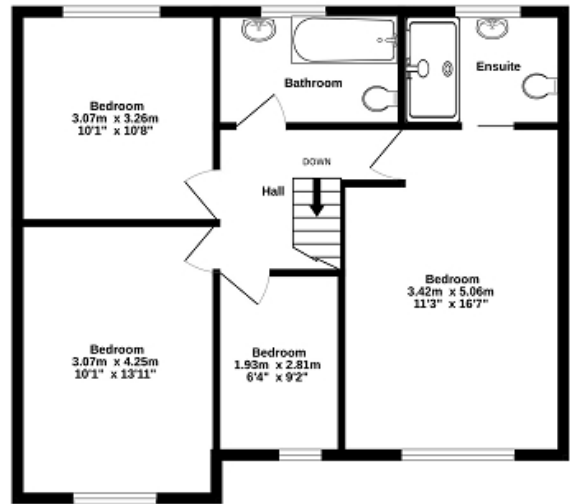
GARAGE AND OFF STREET PARKING

AN IDEAL FAMILY HOME

Ground Floor
76.4 sq.m. (822 sq.ft.) approx.



1st Floor
59.6 sq.m. (641 sq.ft.) approx.



TOTAL FLOOR AREA: 135.9 sq.m. (1463 sq.ft.) approx.

Whilst every attempt has been made to ensure the accuracy of the floorplan contained here, measurements of doors, windows, rooms and any other items are approximate and no responsibility is taken for any error, omission or mis-statement. This plan is for illustrative purposes only and should be used as such by any prospective purchaser. The services, systems and appliances shown have not been tested and no guarantee as to their operability or efficiency can be given.
Made with Metrapix ©2004



Energy Efficiency Rating

	Current	Potential
Very energy efficient - lower running costs		
(92+) A		
(81-91) B		
(69-80) C	71	79
(55-68) D		
(39-54) E		
(21-38) F		
(1-20) G		
Not energy efficient - higher running costs		
England, Scotland & Wales	EU Directive 2002/91/EC	

The energy efficiency rating is a measure of the overall efficiency of a home. The higher the rating the more energy efficient the home is and the lower the fuel bills will be.