



**29 CHESHIRE GARDENS  
CHESSINGTON  
SURREY  
KT9 2PR  
OFFERS IN EXCESS OF  
£500,000**

**EXTENDED LINK TERRACED HOUSE**

**THREE BEDROOMS**

**TWO RECEPTION AREAS**

**14'1 X 10'6 KITCHEN**

**FOUR PIECE BATHROOM SUITE**

**DOUBLE GLAZED WINDOWS**

**GAS CENTRAL HEATING**

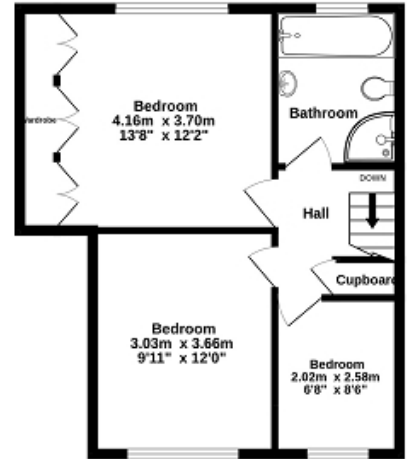
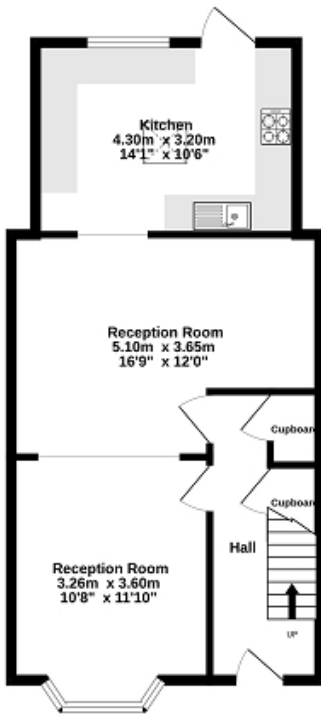
**56' X 19' EASTERLY FACING REAR GARDEN**

**OFF STREET PARKING**

**NO FORWARD CHAIN**

Ground floor

1st floor



TOTAL FLOOR AREA : 94.3 sq.m. (1015 sq.ft.) approx.

Whilst every attempt has been made to ensure the accuracy of the floorplan contained here, measurements of doors, windows, rooms and any other items are approximate and no responsibility is taken for any error, omission or mis-statement. This plan is for illustrative purposes only and should be used as such by any prospective purchaser. The services, systems and appliances shown have not been tested and no guarantee as to their operability or efficiency can be given.  
Made with Metropix ©2024



### Energy Efficiency Rating

	Current	Potential
<i>Very energy efficient - lower running costs</i>		
(92+) <b>A</b>		
(81-91) <b>B</b>		
(69-80) <b>C</b>		79
(55-68) <b>D</b>	63	
(39-54) <b>E</b>		
(21-38) <b>F</b>		
(1-20) <b>G</b>		
<i>Not energy efficient - higher running costs</i>		
<b>England, Scotland &amp; Wales</b>	EU Directive 2002/91/EC	

The energy efficiency rating is a measure of the overall efficiency of a home. The higher the rating the more energy efficient the home is and the lower the fuel bills will be.