



**81 DEVON WAY
CHESSINGTON
SURREY
KT9 2RH
£685,000**

EXTENDED SEMI DETACHED HOUSE

FOUR/FIVE BEDROOMS

THREE RECEPTION ROOMS

23'7 X 8'11 MODERN KITCHEN DINING ROOM

THREE BATHROOM/SHOWER ROOMS

DOUBLE GLAZED WINDOWS

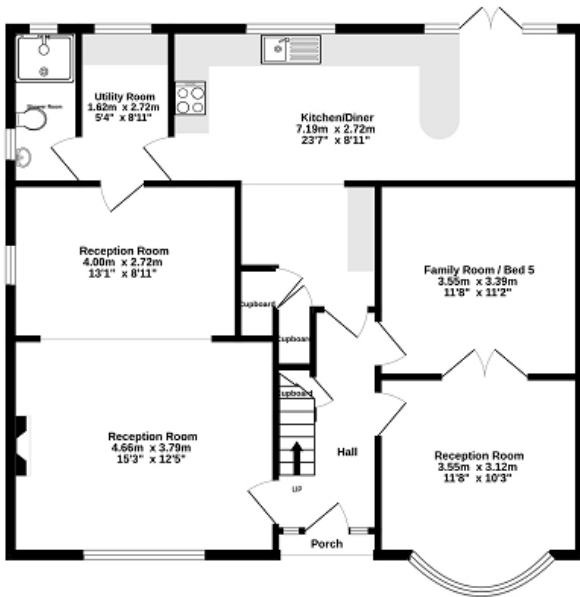
GAS CENTRAL HEATING

40' X 30' REAR GARDEN

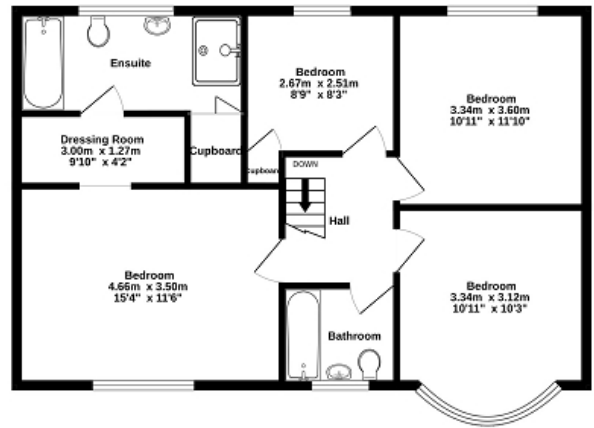
OFF STREET PARKING

AN IDEAL FAMILY HOME

Ground Floor
93.2 sq.m. (1003 sq.ft.) approx.



1st Floor
66.8 sq.m. (719 sq.ft.) approx.



TOTAL FLOOR AREA: 160.0 sq.m. (1722 sq.ft.) approx.

Whilst every attempt has been made to ensure the accuracy of the floorplan contained here, measurements of doors, windows, rooms and any other items are approximate and no responsibility is taken for any error, omission or mis-statement. This plan is for illustrative purposes only and should be used as such by any prospective purchaser. The services, systems and appliances shown have not been tested and no guarantee as to their operability or efficiency can be given.
Made with Metropix ©2024



Energy Efficiency Rating		
	Current	Potential
Very energy efficient - lower running costs		
(92+) A		
(81-91) B		
(69-80) C		76
(55-68) D	57	
(39-54) E		
(21-38) F		
(1-20) G		
Not energy efficient - higher running costs		
England, Scotland & Wales	EU Directive 2002/91/EC	

The energy efficiency rating is a measure of the overall efficiency of a home. The higher the rating the more energy efficient the home is and the lower the fuel bills will be.