



**11 ROMNEY CLOSE
CHESSINGTON
SURREY
KT9 1BP
OFFERS IN EXCESS OF
£550,000**

EXTENDED TUDOR STYLE SEMI DETACHED HOUSE

THREE BEDROOMS

TWO RECEPTION ROOMS

16'6 X 8'4 KITCHEN

GAS CENTRAL HEATING

MAJORITY DOUBLE GLAZED

55' X 29' SOUTH FACING GARDEN

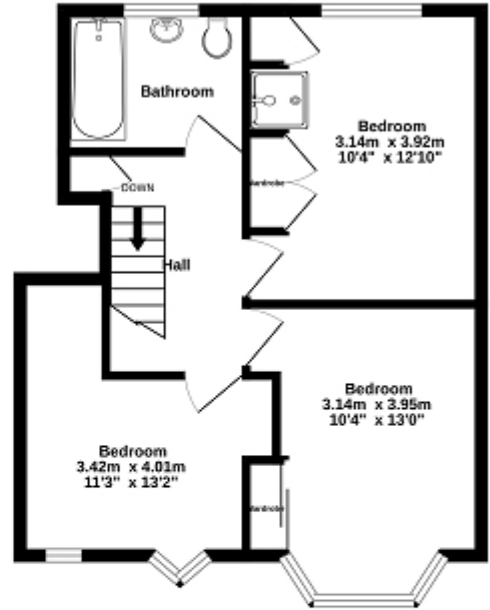
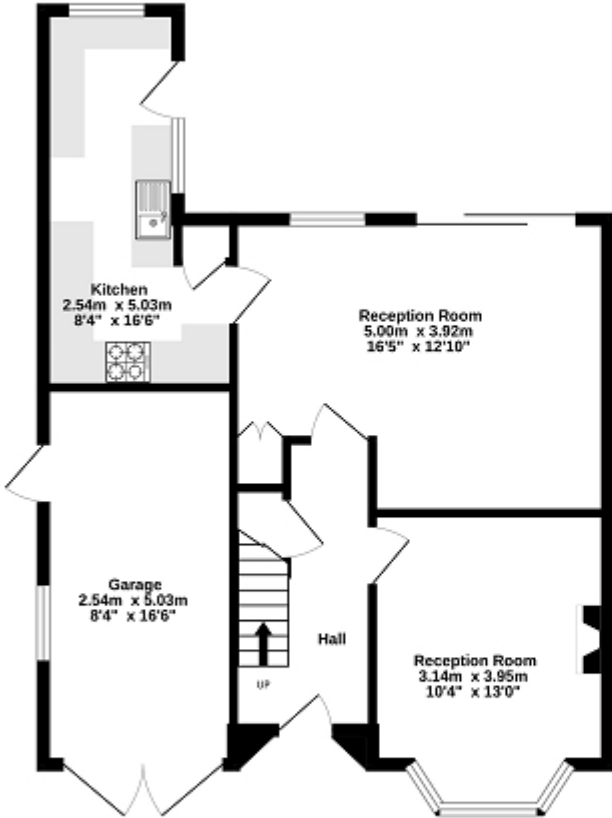
GARAGE WITH OWN DRIVE

UPDATING REQUIRED

NO FORWARD CHAIN

Ground Floor
59.7 sq.m. (643 sq.ft.) approx.

1st Floor
43.3 sq.m. (466 sq.ft.) approx.



TOTAL FLOOR AREA: 103.0 sq.m. (1108 sq.ft.) approx.

Whilst every attempt has been made to ensure the accuracy of the floorplan contained here, measurements of doors, windows, rooms and any other items are approximate and no responsibility is taken for any error, omission or mis-statement. This plan is for illustrative purposes only and should be used as such by any prospective purchaser. The services, systems and appliances shown have not been tested and no guarantee as to their operability or efficiency can be given.
Made with Metropix 02024



Energy Efficiency Rating

	Current	Potential
<i>Very energy efficient - lower running costs</i>		
(92+) A		
(81-91) B		
(69-80) C		73
(55-68) D		
(39-54) E	51	
(21-38) F		
(1-20) G		
<i>Not energy efficient - higher running costs</i>		
England, Scotland & Wales	EU Directive 2002/91/EC	

The energy efficiency rating is a measure of the overall efficiency of a home. The higher the rating the more energy efficient the home is and the lower the fuel bills will be.