



PORTFOLIO
from



brown & merry

Tamarisk Way, Weston Turville, Buckinghamshire

28 Tamarisk Way, Weston Turville, Buckinghamshire HP22 5ZB

A substantial, six bedroom, family home located in a highly desirable, tucked away location. Presented in immaculate condition throughout.



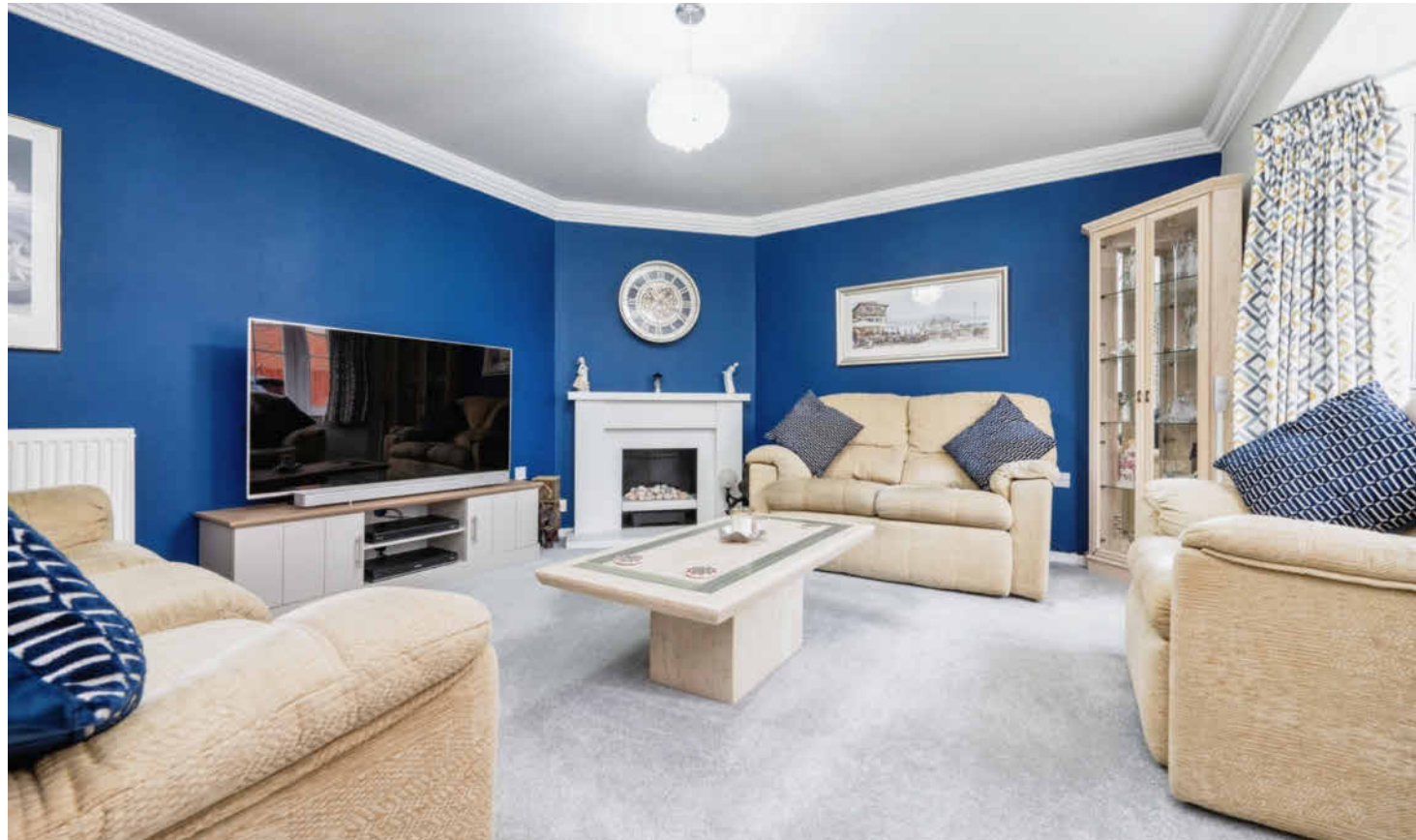
Accommodation

The spacious accommodation comprises of a welcoming entrance hall, stairs to the first and second floors, cloakroom, bright and spacious sitting room with feature fireplace, family room with doors on the rear garden, dining room with large bay window to the front aspect, which leads through to a stunning contemporary kitchen with large centre island, and utility room, enjoying views over the rear garden.

On the first and second floors is a spacious master bedroom with fitted wardrobes and a well equipped en-suite, five further generous bedrooms, a shower room and well appointed family bathroom.

Outside

To the front of the property is a well maintained garden enclosed with hedging, path to the front door, private double driveway leads to the detached double garage. The back garden enjoys a sunny south westerly aspect and measures approximately 73ft x 39ft, featuring a stone patio area, a generous area of lawn and summer house. The garden is fully enclosed with fencing and mature



trees and provides a high degree of privacy.

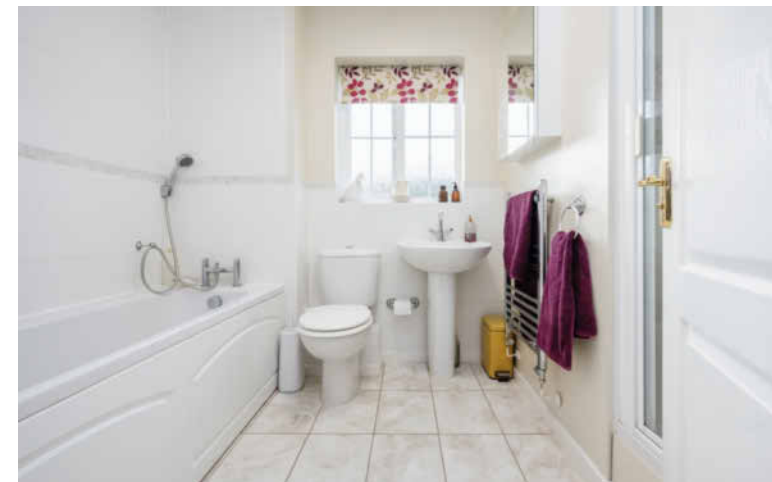
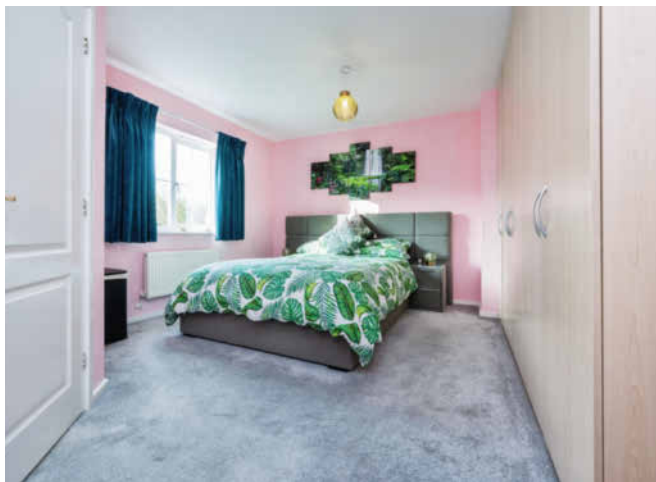
Location

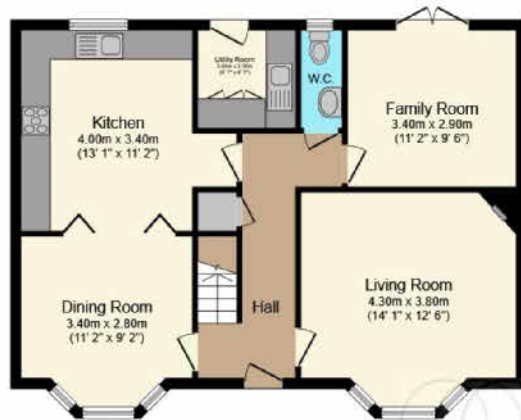
This superb family home is well located on the increasingly popular Hampden Hall development, within the catchment for The John Colet and the ability to walk to Stoke Mandeville station being a particular attraction. There are also nearby footpaths giving access to the surrounding countryside with the Chiltern Hills as a backdrop. The county town provides a good range of shopping and entertainment facilities, together with grammar schools. The nearby A41M offers a swift connection with the M25 (Junction 20) and M1.

Education

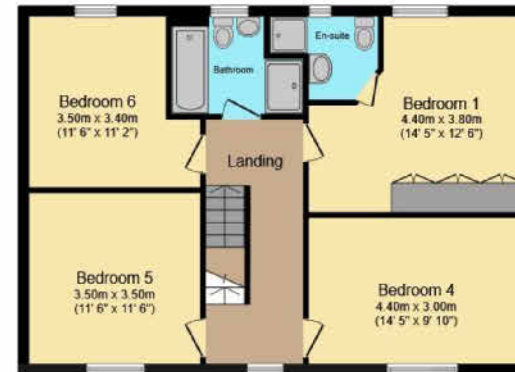
With many local schools in the area from Bedgrove Junior school to Weston Turville CE School and then the highly regarded John Colet upper school in Wendover. Aylesbury also has the Grammar and High Schools, together with Sir Henry Floyd Grammar School.



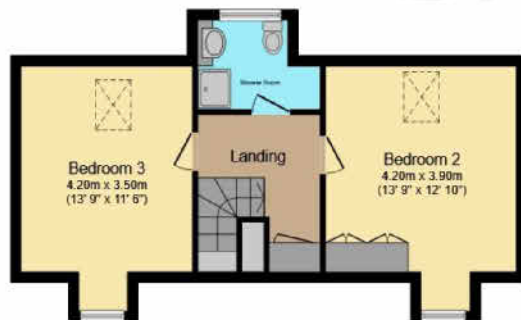




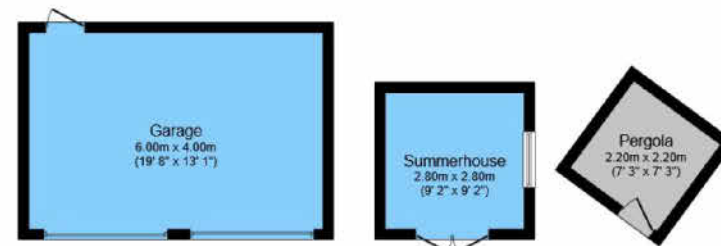
Ground Floor



First Floor



Second Floor



Outbuilding

Total floor area 228.1 m² (2,455 sq.ft.) approx

This floor plan is for illustrative purposes only. It is not drawn to scale. Any measurements, floor areas (including any total floor area), openings and orientation are approximate. No details are guaranteed, they cannot be relied upon for any purpose and they do not form part of any agreement. No liability is taken for any error, omission or misstatement. A party must rely upon its own inspection(s). Powered by www.focalagent.com

welcome to

Tamarisk Way, Weston Turville, Buckinghamshire

An exceptional six bedroom family home, offering light, spacious and versatile accommodation over three floors, presented in excellent condition throughout, 28 Tamarisk is the perfect home for a growing family. Viewing is essential.

Guide Price

£775,000

- Six Bedrooms
- Three Bathrooms
- Three Reception Rooms
- Double Garage and Parking

Tenure: Freehold

EPC Rating: C

PORTFOLIO
from


brown & merry



To find out more information or to arrange a viewing call

01296 624444

or email Wendover@brownandmerry.co.uk
Woollerton House, 7 High Street, Wendover, Aylesbury,
Buckinghamshire HP22 6DU
brownandmerry.co.uk

1. MONEY LAUNDERING REGULATIONS Intending purchasers will be asked to produce identification documentation at a later stage and we would ask for your co-operation in order that there is no delay in agreeing the sale. 2. These particulars do not constitute part or all of an offer or contract. 3. The measurements indicated are supplied for guidance only and as such must be considered incorrect. Potential buyers are advised to recheck measurements before committing to any expense. 4. We have not tested any apparatus, equipment, fixtures or services and it is in the buyers interest to check the working condition of any appliances. 5. Where an EPC, or a Home Report (Scotland only) is held for this property, it is available for inspection at the branch by appointment. If you require a printed version of a Home Report, you will need to pay a reasonable production charge reflecting printing and other costs. 6. We are not able to offer an opinion either written or verbal on the content of these reports and this must be obtained from your legal representative. 7. Whilst we take care in preparing these reports, a buyer should ensure that his/her legal representative confirms as soon as possible all matters relating to title including the extent and boundaries of the property and other important matters before exchange of contracts.

Trading name of Sequence (UK) Limited which is registered in England and Wales under company number 4268443, Registered Office is Cumbria House, 16-20 Hockliffe Street, Leighton Buzzard, Bedfordshire, LU7 1GN. VAT Registration Number is 500 2481 05.

