



PORTFOLIO
from


brown & merry

Whittingham Avenue, Wendover, Buckinghamshire HP22 5GU

29 Whittingham Avenue, Wendover, Buckinghamshire HP22 5GU

29 Whittingham Avenue is a three bedroom terraced town house situated close to Wendover Woods in the highly sought after Buckinghamshire village of Wendover.



Entrance Hall

Door to front aspect, storage cupboard and stairs to the first floor landing.

Cloakroom

Low level WC, wash hand basin, window to the front aspect.

Sitting Room

16'9 x 13'1 Max

A bright sitting room with doors to the rear garden, wood effect flooring.

Kitchen

13'1 x 6'1 Max

Fitted with a range of wall and base units, complementary work surfaces over, window to front aspect, sink with drainer, electric over with gas hob oven and extractor. Plumbing for washing machine and dishwasher, space for fridge freezer, useful breakfast bar.

First Floor Landing

Stairs from entrance hall to first floor landing, doors to bedroom 2, bedroom 3 and the family bathroom, stairs to second floor landing.



Bedroom Two

13'1 x 9'1 Max

Windows to rear aspect, fitted wardrobes.

Bedroom Three

13'3 x 11'1 Max

Window to front aspect.

Bathroom

A white suite comprising of bath with shower over, low level WC, wash hand basin, window to side aspect.

Bedroom One

13' Max x 13'2 Max

Window to front aspect and skylight to the rear aspect, door to en-suite.

En-suite

Shower cubicle, low level WC, wash hand basin.

Outside

The rear garden is fully enclosed with panelled fencing and gate to the allocated parking at the rear, paved patio abutting the house, the remainder of the garden is laid to lawn.



Parking

There are two allocated parking spaces to the rear of the property

Education

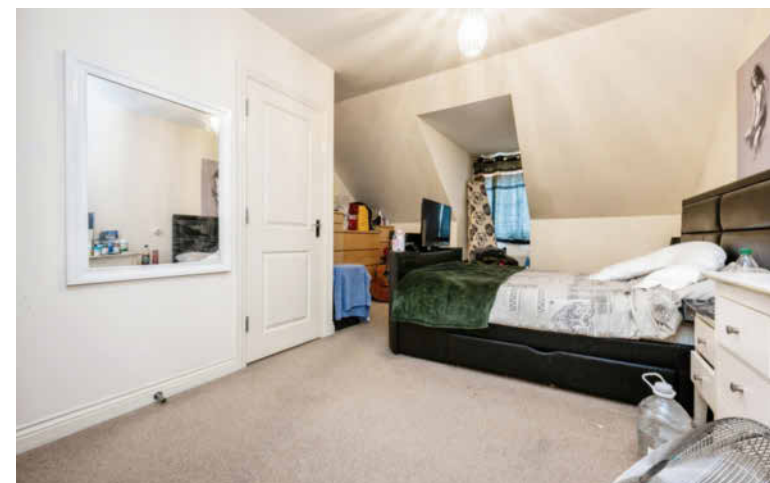
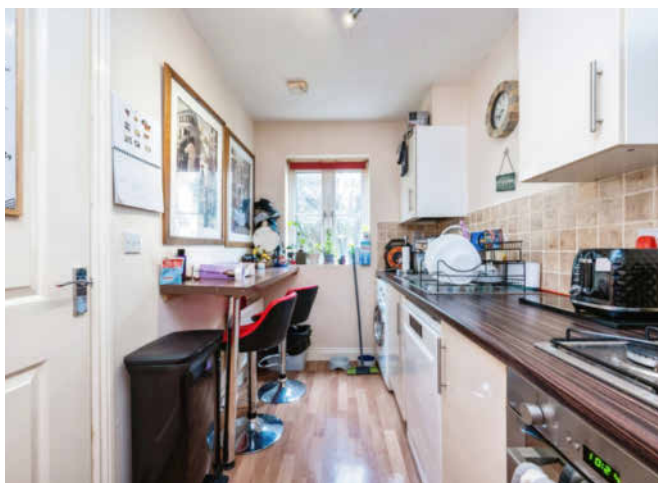
Buckinghamshire has been renowned for its schooling for

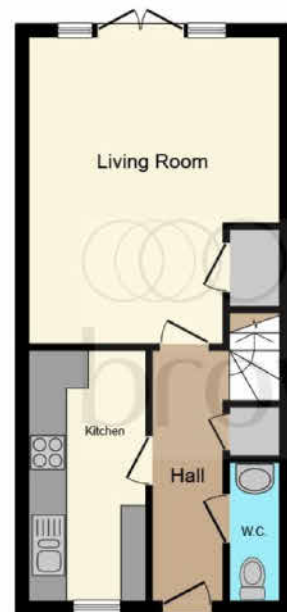
many years. Wendover has a strong selection of schools; Ofsted rated 'outstanding' primary schools, the well regarded John Colet secondary school and the catchment grammar schools, Aylesbury Grammar (boys), Sir Henry Floyd (mixed) and Aylesbury High School (girls). In the independent sector schools include Berkhamsted School and Tring Park School for the Performing Arts.

Location

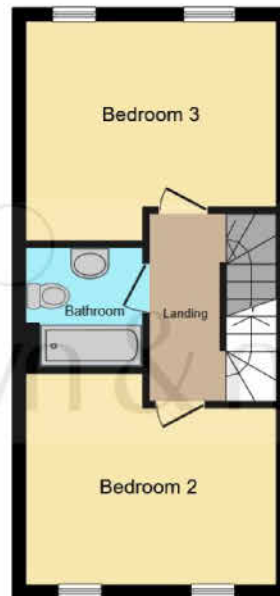
Located in an area of Outstanding Natural Beauty with

views of the Chilterns and easy walking distance of Wendover Woods. The village centre is little more than half a mile away with its eclectic mix of shops, pubs and restaurants and ever popular schools, together with the mainline station offering a frequent service to Marylebone (45mins). The A41 can be found between Aston Clinton and Tring, offering a swift connection to the M25. Alternatively the M40 can be found at High Wycombe





Ground Floor



First Floor



Second Floor

This floor plan is for illustrative purposes only. It is not drawn to scale. Any measurements, floor areas (including any total floor area), openings and orientation are approximate. No details are guaranteed, they cannot be relied upon for any purpose and they do not form part of any agreement. No liability is taken for any error, omission or misstatement. A party must rely upon its own inspection(s). Powered by www.focalagent.com

welcome to

Whittingham Avenue, Wendover, Buckinghamshire HP22 5GU

Located at the foot of Wendover Woods, this charming three bedroom town house, offers excellent accommodation over three floors, enclosed rear garden and the added benefit of two allocated parking spaces to the rear of the property. Viewing is highly recommended.

Offers In Excess Of

£440,000

- Town House
- Three Bedrooms
- Two Bathrooms
- Garden and parking

Tenure: Freehold

EPC Rating: C

PORTFOLIO
from


brown & merry



To find out more information or to arrange a viewing call

01296 624444

or email Wendover@brownandmerry.co.uk

Woollerton House, 7 High Street, Wendover, Aylesbury,
Buckinghamshire HP22 6DU
brownandmerry.co.uk

1. MONEY LAUNDERING REGULATIONS Intending purchasers will be asked to produce identification documentation at a later stage and we would ask for your co-operation in order that there is no delay in agreeing the sale. 2. These particulars do not constitute part or all of an offer or contract. 3. The measurements indicated are supplied for guidance only and as such must be considered incorrect. Potential buyers are advised to recheck measurements before committing to any expense. 4. We have not tested any apparatus, equipment, fixtures or services and it is in the buyers interest to check the working condition of any appliances. 5. Where an EPC, or a Home Report (Scotland only) is held for this property, it is available for inspection at the branch by appointment. If you require a printed version of a Home Report, you will need to pay a reasonable production charge reflecting printing and other costs. 6. We are not able to offer an opinion either written or verbal on the content of these reports and this must be obtained from your legal representative. 7. Whilst we take care in preparing these reports, a buyer should ensure that his/her legal representative confirms as soon as possible all matters relating to title including the extent and boundaries of the property and other important matters before exchange of contracts.

Trading name of Sequence (UK) Limited which is registered in England and Wales under company number 4268443, Registered Office is Cumbria House, 16-20 Hockliffe Street, Leighton Buzzard, Bedfordshire, LU7 1GN. VAT Registration Number is 500 2481 05.

