



PORTFOLIO
from



Rushington Meadow, Weston Turville Buckinghamshire

11 Rushington Meadow, Weston Turville, Buckinghamshire HP22 5YX

A superb stylish, almost new, mid terraced home. Modern open plan living, two double bedrooms, enclosed garden and parking, views.



Entrance

The front door opens to the double aspect open plan living space, large window to the front and window and doors to the rear garden, door to wc. Stairs to the first floor.

The versatile living space has plenty of room for a relaxed seating area, dining and spacious kitchen.

Kitchen / Dining / Living Room

26'7 x 12'9 max

The kitchen is fitted with an excellent range of wall and base units with worksurfaces over, integrated fridge/freezer, dishwasher and washing machine, tiled floor.

Stairs lead to the first floor landing, doors to both bedrooms and the family bathroom

Bedroom 1

12'8 10'4 max

A light and spacious double bedroom with wonderful views over open farmland.



Bedroom 2

12'9 x 7'4 max

Another good sized double bedroom with two windows to the front aspect.

Family Bathroom

6'10 x 5'7

A white suite comprising of bath with shower over, wash hand basin and wc.

Outside

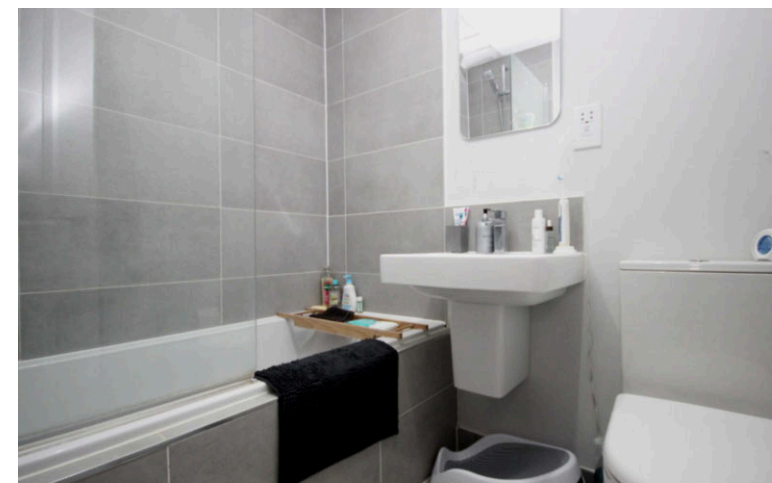
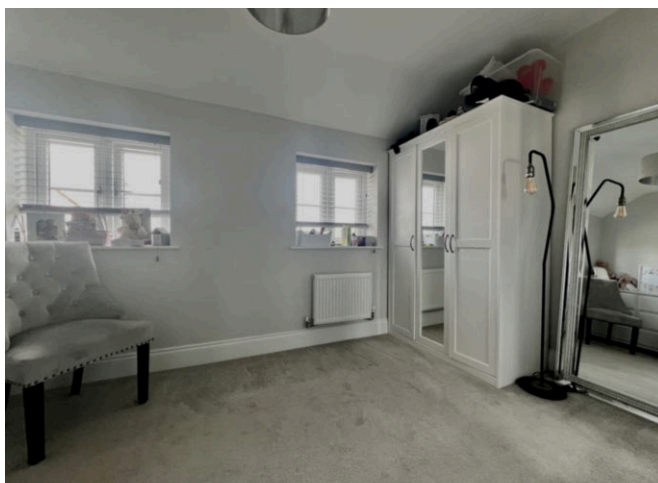
The fully enclosed rear garden has a paved patio area, the remainder of the garden has been laid to lawn and leads around to a good sized timber storage shed, a gate leads to the allocated parking.

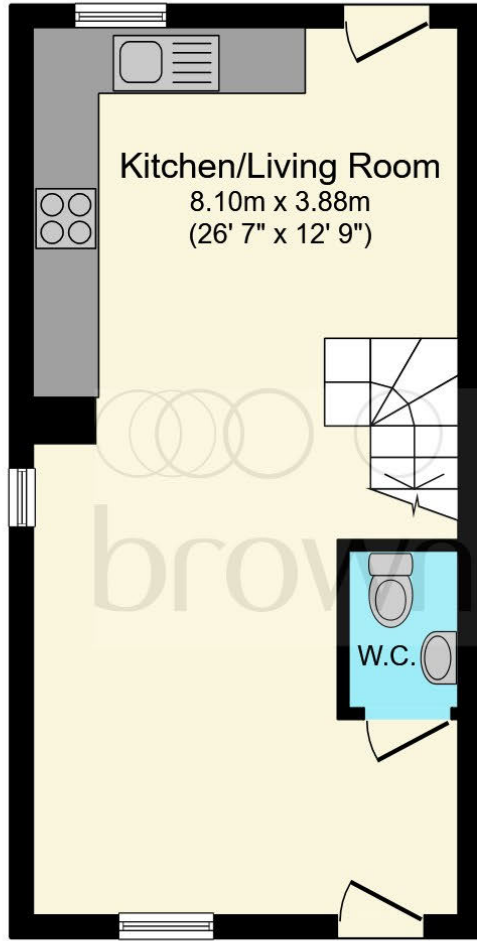
** Please note the property is subject to a service charge of £300 per year



Location

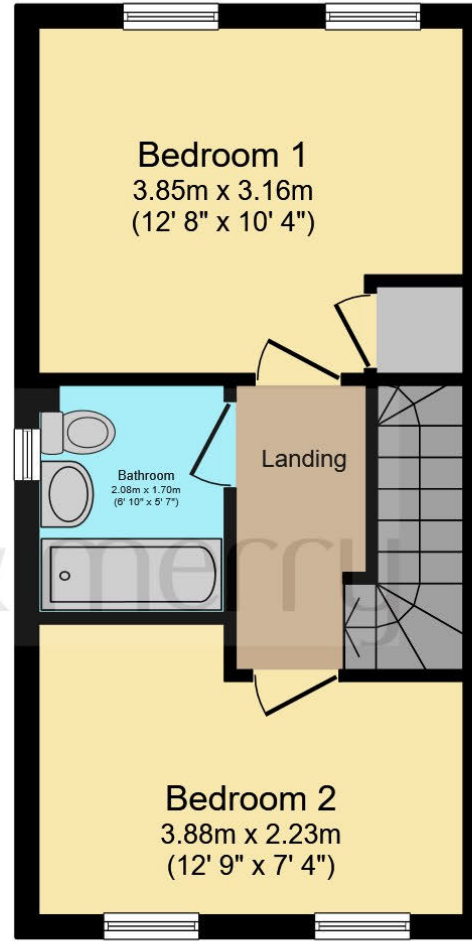
Well located in the heart of Weston Turville village which is situated almost midway between Wendover and the county town of Aylesbury. The village offers a number of local shops, which cater for most day-to-day needs and are all within walking distance. There is also a local primary school, three public houses, a rugby club, popular golf club and reservoir for sailing and angling. There is a choice of railway stations at either Wendover or Stoke Mandeville for London Marylebone or from Tring station to London Euston. The county town of Aylesbury is approximately three miles distant providing a good range of shopping and entertainment facilities, together with grammar schools. The A41 offers a swift connection with the M25 (Junction 20) and M1





Ground Floor

Floor area 31.4 sq.m. (338 sq.ft.) approx



First Floor

Floor area 31.4 sq.m. (338 sq.ft.) approx

This plan is for illustration purposes only and may not be representative of the property. Plan not to scale.

Powered by audioagent.com

welcome to Rushington Meadow, Weston Turville Buckinghamshire

An excellent opportunity for the a first time buyer, investment buyer or a downsizer to acquire this modern home located in the beautiful village of Weston Turville, Buckinghamshire. The property is approaching 5 years old and is part of an exclusive development in the heart of the village with stunning walks and views on your door step.

Guide Price

£400,000

- Two double bedrooms
- Open plan kitchen / diner / living room
- Fully enclose rear garden
- Parking

Tenure: Freehold

EPC Rating: B

PORTFOLIO
from


brown & merry



To find out more information or to arrange a viewing call

01296 624444

or email wendover@sequencehome.co.uk

Woollerton House, 7 High Street, Wendover, Buckinghamshire,

HP22 6DU

brownandmerry.co.uk

1. MONEY LAUNDERING REGULATIONS Intending purchasers will be asked to produce identification documentation at a later stage and we would ask for your co-operation in order that there is no delay in agreeing the sale. 2. These particulars do not constitute part or all of an offer or contract. 3. The measurements indicated are supplied for guidance only and as such must be considered incorrect. Potential buyers are advised to recheck measurements before committing to any expense. 4. We have not tested any apparatus, equipment, fixtures or services and it is in the buyers interest to check the working condition of any appliances. 5. Where an EPC, or a Home Report (Scotland only) is held for this property, it is available for inspection at the branch by appointment. If you require a printed version of a Home Report, you will need to pay a reasonable production charge reflecting printing and other costs. 6. We are not able to offer an opinion either written or verbal on the content of these reports and this must be obtained from your legal representative. 7. Whilst we take care in preparing these reports, a buyer should ensure that his/her legal representative confirms as soon as possible all matters relating to title including the extent and boundaries of the property and other important matters before exchange of contracts.

Trading name of Sequence (UK) Limited which is registered in England and Wales under company number 4268443, Registered Office is Cumbria House, 16-20 Hockliffe Street, Leighton Buzzard, Bedfordshire, LU7 1GN. VAT Registration Number is 500 2481 05.

