



Jeannie Arm Road, Wendover, Buckinghamshire, HP22 5GP

This spacious three bedroom family home is situated in a prime location on the edge of Wendover Woods.



Entrance Hall

Stairs to first floor, and doors to the kitchen, lounge and cloakroom.

Kitchen

A good range of both wall and base units with complementary work surfaces over, inset stainless steel sink unit with mixer tap, tiles splashbacks, integrated oven with hob and extractor over, space for a dishwasher, integrated fridge freezer and a window to the front aspect.

Cloakroom

Window to side aspect, low level W/C, wash hand basin with tiled splashbacks and a radiator.

Lounge

A bright and spacious room with window to the side aspect and French door leading to the rear garden. There is also wood effect flooring, a built in under stair cupboard and a radiator.



First Floor Landing

Doors to bedroom two and three, the family bathroom as well as stairs to second floor.

Bedroom Two

A good sized double bedroom with windows to the rear and side aspect, carpeted flooring and a radiator.

Bedroom Three

Another good sized double bedroom with two windows to the front and side aspects, carpeted flooring and a radiator.

Family Bathroom

Comprising of a bath with shower over, low level W/C and wash hand basin, tiles floors and part tiled walls and a heated towel rail.



Second Floor landing

Door to the Bedroom One and the airing cupboard.

Bedroom One

A lovely spacious master suite with walk in dressing room, window to front and side aspects, carpeted flooring, radiator and eves storage.

En-suite to Bedroom One

Low level wc, wash hand basin and fully tiled shower cubicle, and a heated towel rail.

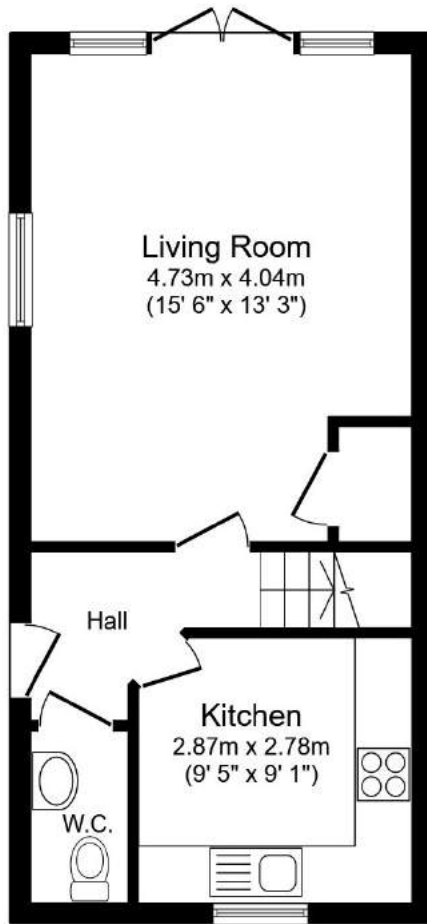
Externally

To the front you will find borders with mature planting to both sides and a small pathway to the front door. The rear garden has a small patio area, lawn and a mature planting. There is also a garage in a seperate block.

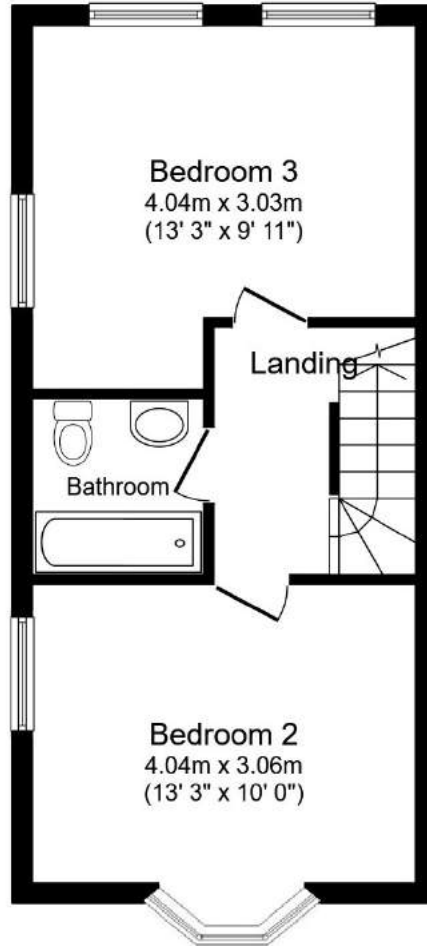
Location

Wendover is a most attractive thriving village set at the foot of the Chiltern Hills just to the southeast of the county town of Aylesbury. Road access to London could either be via the A413 and M40 or the A41 and M1. The village has a railway station, at the top of the high street on the Chilterns Railway Line providing commuter services to Marylebone in 45-50 Minutes. It also offers good day to day shopping facilities and has regular weekly market on Thursdays, Health Centre. Dentists and a Library. There are schools in the village for all ages and the renowned Grammar School and High schools are in Aylesbury together with the Sir Henry Floyd co-ed Grammar School. There are many opportunities for recreation close to the village including Wendover Woods and Coombe Hill and most sports are available in the Aylesbury Vale.

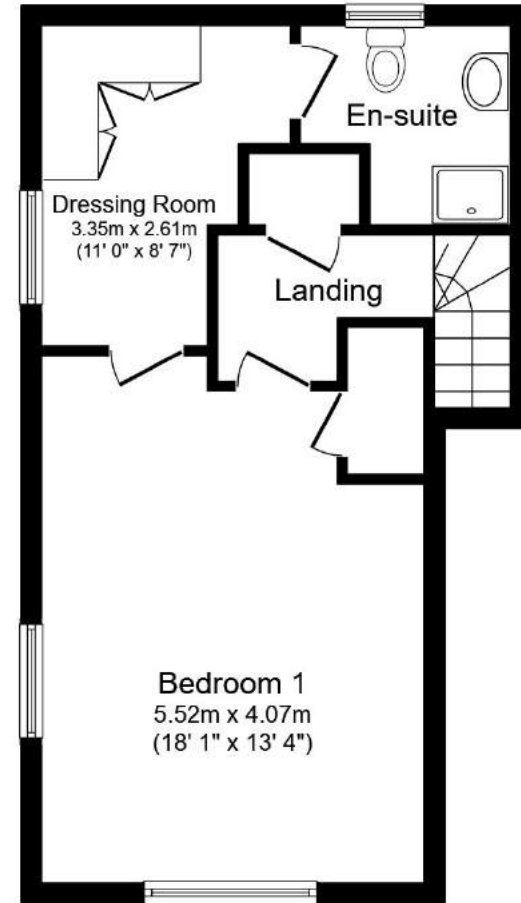




Ground Floor



First Floor



Second Floor

Total floor area 109.7 m² (1,180 sq.ft.) approx



welcome to

Jeannie Arm Road, Wendover, Buckinghamshire, HP22 5GP

A bright and spacious 3 bedroom, 2 bathroom townhouse facing an attractive open green on the popular Princes Mary Gate Development. Spread over three floors this contemporary family home offers excellent accommodation throughout. A garage plus an allocated parking space and south westerly facing rear garden.

Price

£550,000

- Three Bedrooms
- Two Bathrooms
- Garage and Parking
- Prime Location

Tenure: Freehold

EPC Rating: D



PORTFOLIO
from |  **brown & merry**

To find out more information or to arrange a viewing call

01296 622855

or email wendovercfs@sequencehome.co.uk
Woollerton House, 7 High Street, Wendover, Aylesbury,
Buckinghamshire HP22 6DU
brownandmerry.co.uk

1. MONEY LAUNDERING REGULATIONS Intending purchasers will be asked to produce identification documentation at a later stage and we would ask for your co-operation in order that there is no delay in agreeing the sale. 2. These particulars do not constitute part or all of an offer or contract. 3. The measurements indicated are supplied for guidance only and as such must be considered incorrect. Potential buyers are advised to recheck measurements before committing to any expense. 4. We have not tested any apparatus, equipment, fixtures or services and it is in the buyers interest to check the working condition of any appliances. 5. Where an EPC, or a Home Report (Scotland only) is held for this property, it is available for inspection at the branch by appointment. If you require a printed version of a Home Report, you will need to pay a reasonable production charge reflecting printing and other costs. 6. We are not able to offer an opinion either written or verbal on the content of these reports and this must be obtained from your legal representative. 7. Whilst we take care in preparing these reports, a buyer should ensure that his/her legal representative confirms as soon as possible all matters relating to title including the extent and boundaries of the property and other important matters before exchange of contracts.

Trading name of Sequence (UK) Limited which is registered in England and Wales under company number 4268443, Registered Office is Cumbria House, 16-20 Hockliffe Street, Leighton Buzzard, Bedfordshire, LU7 1GN. VAT Registration Number is 500 2481 05.

