

Griffin Road, SE18

Approximate Gross Internal Area = 77.8 sq m / 837 sq ft
Basement = 45.2 sq m / 486 sq ft
Total = 123 sq m / 1323 sq ft

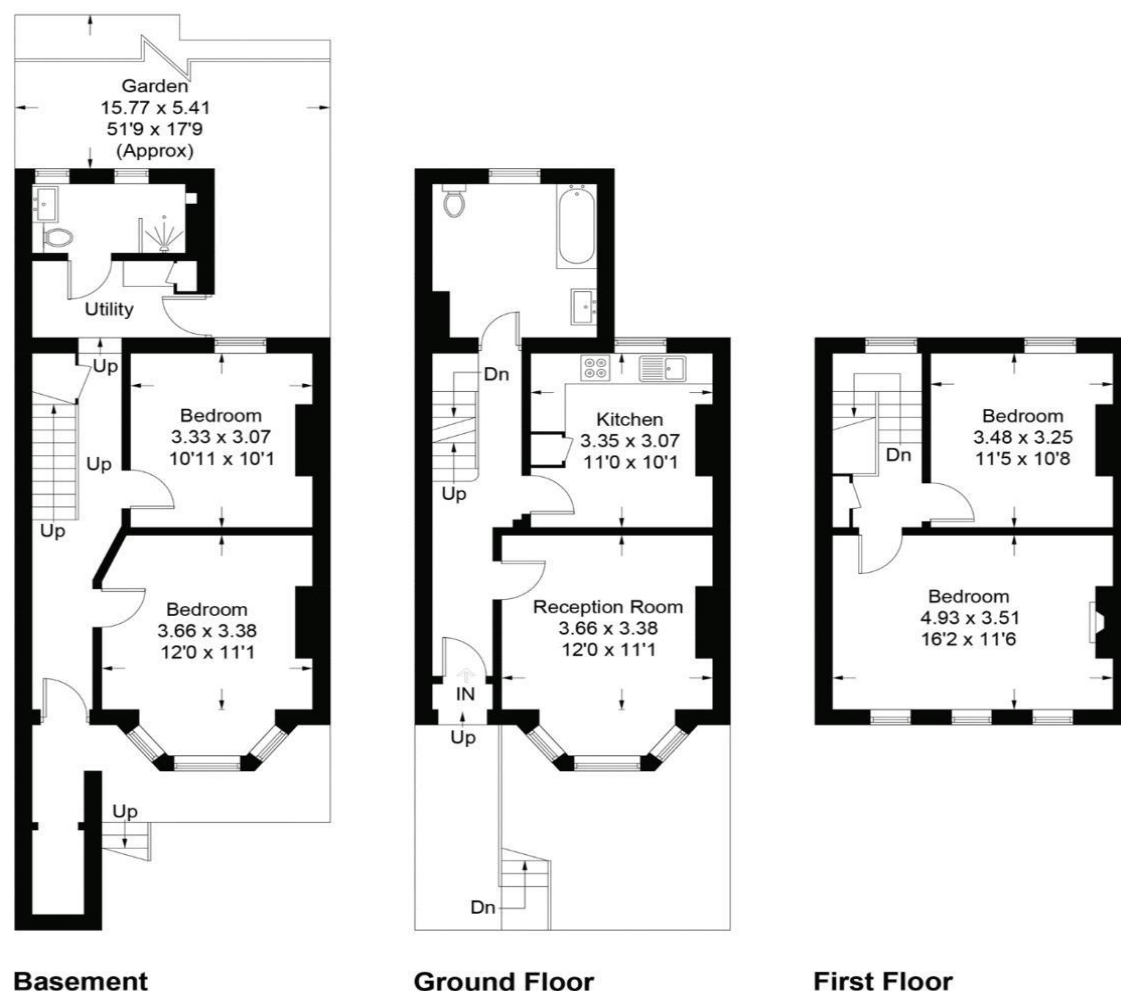


Illustration for identification purposes only,
measurements are approximate, not to scale. (ID683705)

To arrange an appointment to view this property or to book a valuation on your own property, contact hi residential for a professional Prompt and friendly service

Hj Residential

ESTATE AGENT, LETTING & MANAGEMENT AGENT

Harrison
Ingram

18 Joyce Dawson Way, Thamesmead, SE28 8RA T 020 8311 9766 F 020 8312 4222 management@hi-residential.com



- Victorian Townhouse
- 4 Double Bedroom
- Fully Refurbished
- High Spec Throughout
- 2 Bathrooms
- Modern Fitted Kitchen
- Approx. 80ft Rear Garden
- Short Walk to Local Train Station

www.hi-residential.com, www.facebook.com/HiResidentialEA, twitter.com/HiResidentialEA

Griffin Road, Plumstead, SE18 7QD

Offers in Excess of £550,000 Freehold

experience the hi residential way

Property Details

External

First Floor Entrance Hallway 20' 10" x 5' 1" (6.36m x 1.56m)

Reception 14' 6" x 12' 1" (4.42m x 3.68m)

Kitchen 12' 0" x 10' 1" (3.65m x 3.08m)

Bathroom 10' 8" x 9' 5" (3.24m x 2.88m)

Second Floor

Stairs

Master Bedroom 16' 2" x 18' 4" (4.93m x 5.59m)

Bedroom 2 3.20

Ground Floor

Entrance Hallway 29' 1" x 5' 2" (8.87m x 1.57m)

Bedroom 3 12' 0" x 14' 6" (3.66m x 4.43m)

Bedroom 4 11' 10" x 10' 0" (3.60m x 3.06m)

Utility Area 4' 11" x 9' 5" (1.49m x 2.86m)

Shower Room Shower Room

A truly stunning 4 bedroom 2 bathroom Victorian Townhouse located on Griffin Road, within a short walk to Plumstead Station. This newly fully refurbished immaculate 3 story Victorian property has all the key features for the perfect family home.... Internally, this property offers great living space set over 3 floors. On the ground are 2 double bedrooms along with a shower room, utility area and access to the approx. 80ft rear garden. On the first floor you have large reception room, modern kitchen diner and a high spec family bathroom. On the second floor you have a substantial size master bedroom and a double bedroom. Early viewings are highly recommended to really appreciate this family home.

