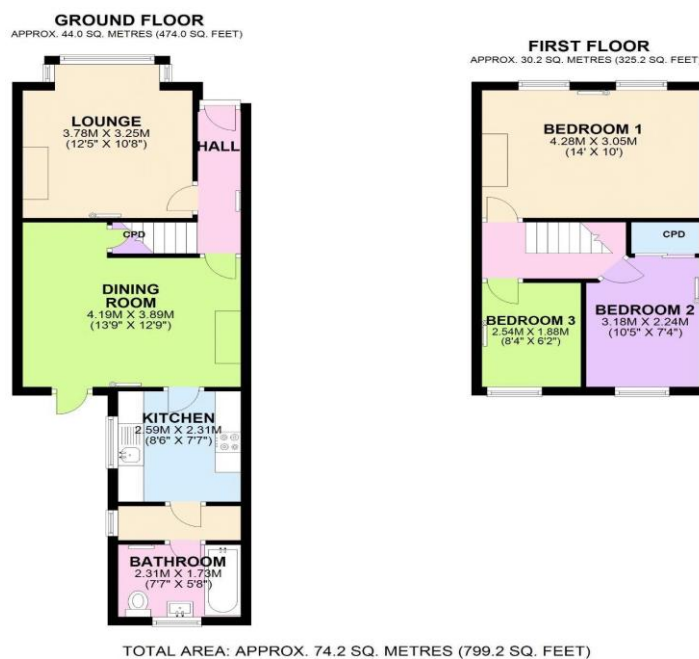




Score	Energy rating	Current	Potential
92+	A		
81-91	B		
69-80	C		78 C
55-68	D	66 D	
39-54	E		
21-38	F		
1-20	G		



To arrange an appointment to view this property or to book a valuation on your own property, contact hi residential for a professional Prompt and friendly service

Hi Residential Limited. Registered in England No. 10082765. Registered office: Heritage House, 34b North Cray Road, Bexley, United Kingdom, DA5 3LZ

24 Plumstead Common Road, SE183TN
020 8316 6616
sales@hi-residential.com
lettings@hi-residential.com
www.hi-residential.com



Kirkham Street, Plumstead , SE18 2JS

Price Guide Price £390,000 - £410,000



Hi Residential Limited. Registered in England No. 10082765. Registered office: Heritage House, 34b North Cray Road, Bexley, United Kingdom, DA5 3LZ

24 Plumstead Common Road, SE183TN
020 8316 6616
sales@hi-residential.com
lettings@hi-residential.com
www.hi-residential.com



experience the hi residential way

Property Details

****Guide Price £420,000 - £440,000**** ****Charming Three-Bedroom Victorian Terrace Home Near Plumstead Common**** We are delighted to present this beautiful three-bedroom Victorian terrace home, ideally situated just off Plumstead Common. This property is perfectly located with easy access to a selection of shops on The Slade and convenient bus routes nearby. This home is rich in character and retains various original features, including cast iron fireplaces, period doors, and ornate corning, all adding to its historical charm. The house is also modernized with double-glazed windows and gas central heating, ensuring comfort throughout the seasons. The layout includes two separate reception rooms, providing ample space for family living and entertaining. The front reception room features a bay window that floods the space with natural light, creating a warm and inviting atmosphere. The well-presented downstairs bathroom adds convenience and functionality to the home. On the first floor, you'll find a substantial master bedroom alongside two more bedrooms—one double and one single—offering flexible accommodation suited to a variety of needs. Outside, the rear garden is a true highlight. It is mainly laid to lawn with a custom seating area at the end, perfect for relaxing in the warmer months or for hosting gatherings. ****Key Features:****

- Three bedrooms: one substantial master, one double, and one single
- Two separate reception rooms
- Original Victorian features including cast iron fireplaces and period corning
- Modern comforts such as double glazing and gas central heating
- Well-presented downstairs bathroom
- Lovely rear garden with custom seating area

This property is an excellent opportunity for those seeking a home with both historical charm and modern amenities. Situated in a sought-after location near Plumstead Common, it offers both tranquility and convenience. We highly recommend viewing this property to truly appreciate what it has to offer. Contact us today to schedule your visit and take the first step towards making this beautiful house your new home.

