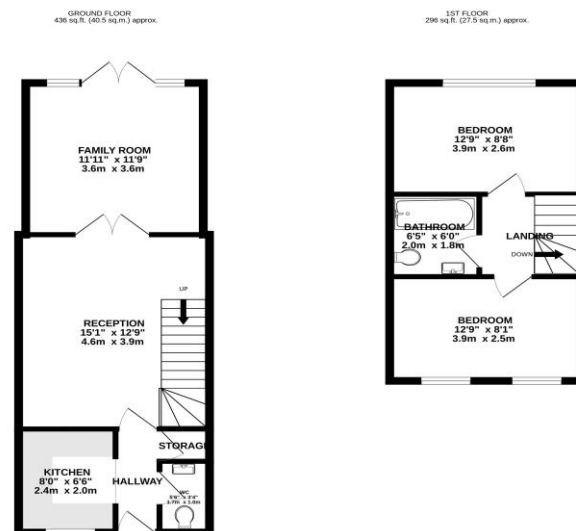




Birchdene Drive, Central Thamesmead, Price £370,000 Freehold



Score	Energy rating	Current	Potential
92+	A		
81-91	B		91 B
69-80	C	69 C	
55-68	D		
39-54	E		
21-38	F		
1-20	G		



TOTAL FLOOR AREA: 732 sq.ft. (67.8 sq.m.) approx.

When any change has been made to ensure the accuracy of the figures, the original figures shall prevail.

© Crown Copyright. All rights reserved. No part of this publication may be reproduced without the prior written permission of the Controller of Her Majesty's Stationery Office.

To arrange an appointment to view this property or to book a valuation on your own property, contact hi residential for a professional Prompt and friendly service

Hi Residential Limited. Registered in England No. 10082765. Registered office: Heritage House, 34b North Cray Road, Bexley, United Kingdom, DA5 3LZ

24 Plumstead Common Road, SE183TN
020 8316 6616
sales@hi-residential.com
lettings@hi-residential.com
www.hi-residential.com



Hi Residential Limited. Registered in England No. 10082765. Registered office: Heritage House, 34b North Cray Road, Bexley, United Kingdom, DA5 3LZ

24 Plumstead Common Road, SE183TN
020 8316 6616
sales@hi-residential.com
lettings@hi-residential.com
www.hi-residential.com



experience the hi residential way



Property Details

- Entrance Hall
- Ground Floor WC
- kitchen 7' 10" x 6' 7" (2.4m x 2m)
- Lounge 15' 1" x 12' 10" (4.6m x 3.9m)
- Family Room 11' 10" x 11' 10" (3.6m x 3.6m)
- Landing
- Bedroom 1 12' 10" x 8' 2" (3.9m x 2.5m)
- Bedroom 2 12' 10" x 8' 6" (3.9m x 2.6m)
- Bathroom
- Garden
- Driveway to Front

Welcome to this beautifully presented mid-terrace house located in the sought-after area of Thamesmead, perfect for modern living. This well-maintained property features two double bedrooms, an upstairs bathroom, a downstairs W.C., an extended family room, and a driveway to the front. The house also benefits from gas central heating and double glazing, ensuring a cozy environment all year round. Local Amenities and Transport Links: Situated in a central location, this house is ideally positioned for convenience and accessibility. The property is just a short walk from Thamesmead Town Centre, where residents can enjoy a variety of shops, cafes, and local services. For those with children, the area is served by several well-regarded schools, including Discovery Primary School and Thamesmead School, providing excellent educational opportunities. Transportation is also convenient, with easy access to bus routes that connect to nearby Woolwich Arsenal station. From here, commuters can catch the DLR and mainline trains, as well as the Elizabeth Line for fast connections across London, including direct routes to the City and West End. Outdoor Activities and Community Life: Thamesmead is known for its community feel and abundance of green spaces, such as the picturesque Southmere Lake, perfect for leisurely weekends and after-work relaxation. This property is ideal for those seeking a combination of a peaceful residential area with the vibrancy of city life. Whether you are a first-time buyer or an investor, this house offers a fantastic living space in a prime London location. Viewing is highly recommended to fully appreciate the unique charm and convenience of this lovely Thamesmead home. Contact us today to schedule a visit and find your perfect home in this vibrant community.

