

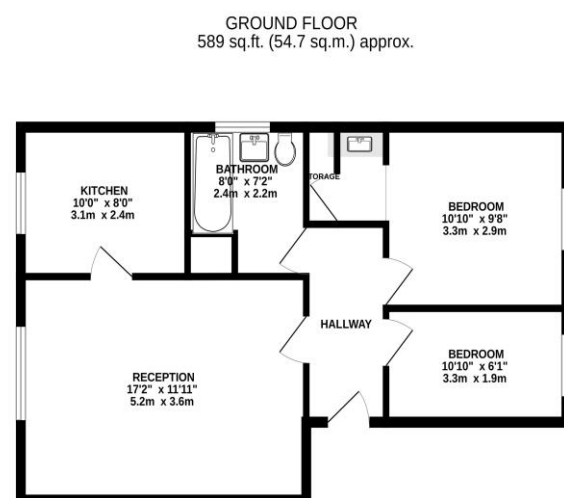


## Fairway Drive, North Thamesmead, SE28

### Price Guide Price £200,000 - £215,000



Score	Energy rating	Current	Potential
92+	A		
81-91	B	81 B	81 B
69-80	C		
55-68	D		
39-54	E		
21-38	F		
1-20	G		



TOTAL FLOOR AREA: 589 sq.ft. (54.7 sq.m.) approx.  
Whilst every attempt has been made to ensure the accuracy of the floor plan, measurements of walls, windows, doors and any other items are approximate and no responsibility is taken for any discrepancy or error. The actual layout and dimensions may vary slightly from those shown on the floor plan. Hi Residential is not responsible for any errors or omissions. Make use of the floor plan as a guide only.

*To arrange an appointment to view this property or to book a valuation on your own property, contact hi residential for a professional Prompt and friendly service*

Hi Residential Limited. Registered in England No. 10082765. Registered office: Heritage House, 34b North Cray Road, Bexley, United Kingdom, DA5 3LZ

Hi Residential Limited. Registered in England No. 10082765. Registered office: Heritage House, 34b North Cray Road, Bexley, United Kingdom, DA5 3LZ

24 Plumstead Common Road, SE183TN  
 020 8316 6616  
 sales@hi-residential.com  
 lettings@hi-residential.com  
 www.hi-residential.com



24 Plumstead Common Road, SE183TN  
 020 8316 6616  
 sales@hi-residential.com  
 lettings@hi-residential.com  
 www.hi-residential.com



**Property Details**

Discover comfortable living in this spacious two-bedroom flat, situated on the first floor of a modern, purpose-built block. Conveniently located just a short stroll from public transport, local schools, and amenities, this property offers both convenience and accessibility. Step into the welcoming entrance hall and experience the spaciousness and comfort of this modern flat. The well-appointed lounge area provides ample space for relaxation and entertainment, offering a cozy retreat for unwinding after a long day. Adjacent, the fitted kitchen boasts functionality and convenience, equipped to cater to your culinary needs with ease. The property features two comfortable bedrooms, providing ideal spaces for restful nights and personal retreats. Completing the accommodation, the bathroom offers added convenience for residents. Benefiting from electric heating and double glazing throughout, this home ensures year-round comfort and energy efficiency. Additionally, residents will appreciate the convenience of an allocated parking space. With its prime location and array of features, this two-bedroom flat presents an excellent opportunity for comfortable living. Early viewing is strongly recommended to avoid disappointment. Contact us today to arrange a viewing and secure your chance to make this property your new home.

