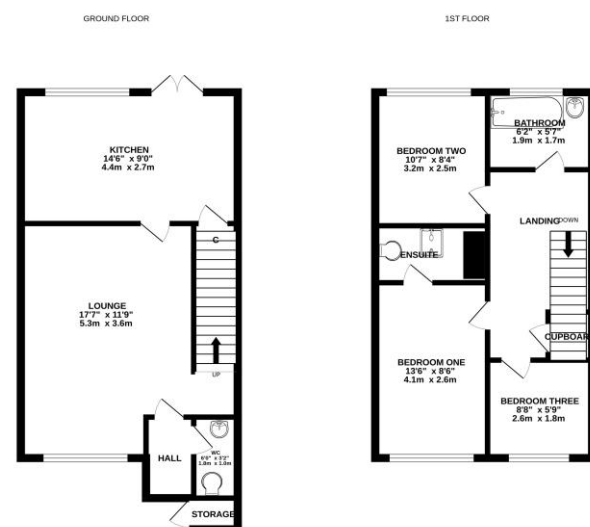




Floathaven Close, Central Thamesmead, SE28 8SN
Price Guide Price £400,000 - £425,000



Score	Energy rating	Current	Potential
92+	A		
81-91	B		85 B
69-80	C	72 C	
55-68	D		
39-54	E		
21-38	F		
1-20	G		



To arrange an appointment to view this property or to book a valuation on your own property, contact hi residential for a professional Prompt and friendly service

Hi Residential Limited. Registered in England No. 10082765. Registered office: Heritage House, 34b North Cray Road, Bexley, United Kingdom, DA5 3LZ

Hi Residential Limited. Registered in England No. 10082765. Registered office: Heritage House, 34b North Cray Road, Bexley, United Kingdom, DA5 3LZ

24 Plumstead Common Road, SE183TN
 020 8316 6616
 sales@hi-residential.com
 lettings@hi-residential.com
 www.hi-residential.com



24 Plumstead Common Road, SE183TN
 020 8316 6616
 sales@hi-residential.com
 lettings@hi-residential.com
 www.hi-residential.com



Property Details

Elegant 3-Bedroom End of Terrace Home in Central Thamesmead

Guide Price £400,000 - £425,000 Freehold Experience the perfect blend of comfort and convenience in this exquisite 3-bedroom end of terrace house, ideally located in the heart of Central Thamesmead. This charming property is just a stone's throw away from the bustling Thamesmead Shopping Centre and offers easy access to local bus routes, seamlessly connecting you to Woolwich and Abbey Wood rail links. As you step inside, you are greeted by a welcoming entrance hall that sets the tone for the rest of this beautifully appointed home. The ground floor hosts a convenient WC, adding to the practical layout of the space. The heart of the home is undoubtedly the spacious lounge, which flows effortlessly into the kitchen/diner. This area is perfect for hosting dinner parties or enjoying everyday family meals, with ample space and natural light. The property boasts three well-proportioned bedrooms, with the main bedroom being a true retreat, featuring its own en suite shower room for added privacy and luxury. Additionally, there is a family shower room, ensuring that mornings are hassle-free for everyone. Step outside to discover the garden, approximately 40ft in length, offering a serene escape or a delightful space for outdoor entertaining and relaxation. The garden's potential is limited only by your imagination, whether you envision a lush garden, a play area, or a cozy outdoor seating arrangement. Residents will benefit from the modern comforts of gas central heating and double glazing throughout the property, ensuring a warm and energy-efficient living environment all year round. This property is not just a house, but a place to call home, offering a perfect balance of peaceful residential living and easy access to local amenities and transport links. Don't miss the opportunity to make this your new haven in Central Thamesmead.

