



SHORTLAND  
HORNE

Trusted  
Property Experts



Canterbury Street  
Hillfields CV1 5NR

# Canterbury Street CV1 5NR

Offering a range of stylish, recently refurbished premium non-ensuite rooms situated a 10 minute walk to Coventry University and just a short distance to The University of Warwick.

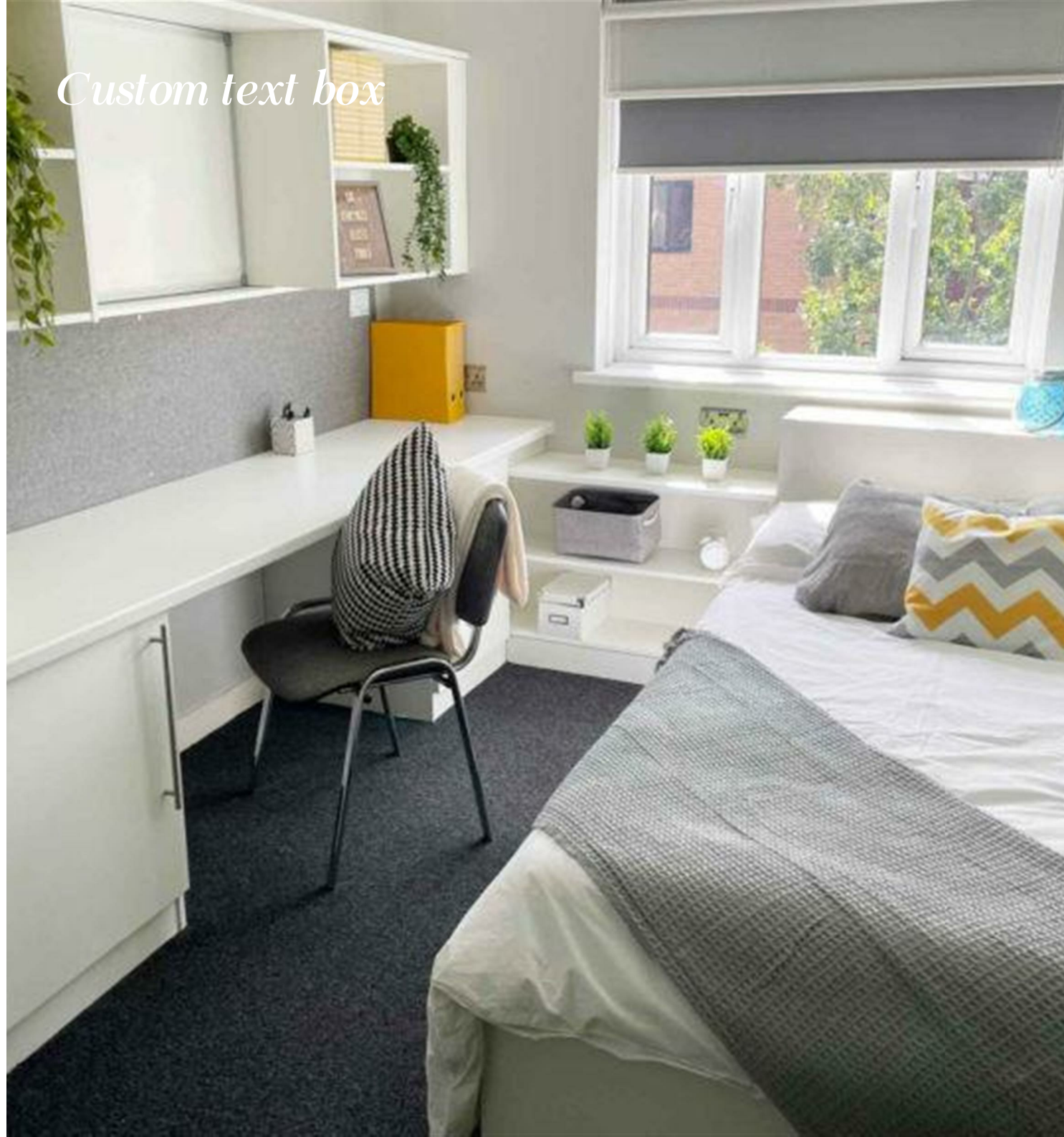
Set in clusters of 5 – 6 our stylish premium non ensuite rooms offer a homely comfortable accommodation with access to bathrooms, shower rooms together with a well-equipped kitchen/social area.

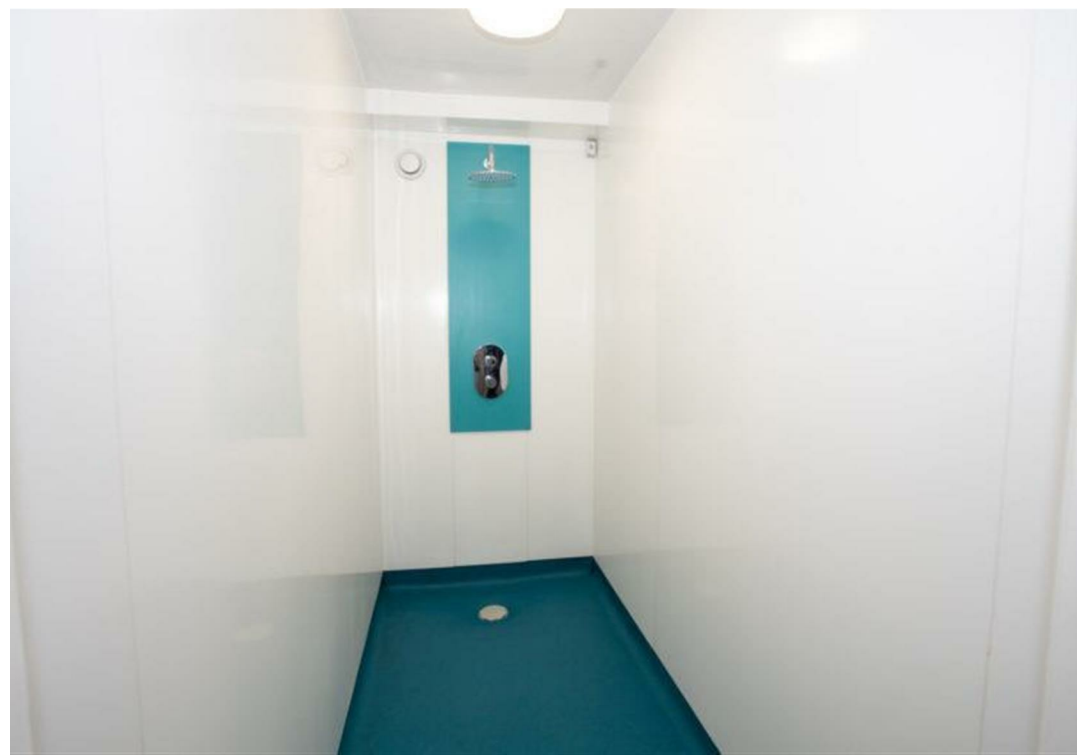
Each room features a large bed, study desk, chair, wardrobe with ample storage. In clusters of 6, you'll have access to a shared kitchen/social area giving you the chance to catch up with friends after a busy day at university.

Singer Hall offers a real sense of community, and includes a communal games and social area, study and breakout spaces, laundry room, onsite hospitality team, onsite parking – all in a safe and secure environment. **\*\* STUDENTS ONLY\*\***

Please note the rent of £79 per week is based on a tenancy length of 51 weeks. A 45 week term is available at a rent of £80 per week.

*Custom text box*





*Custom text box*

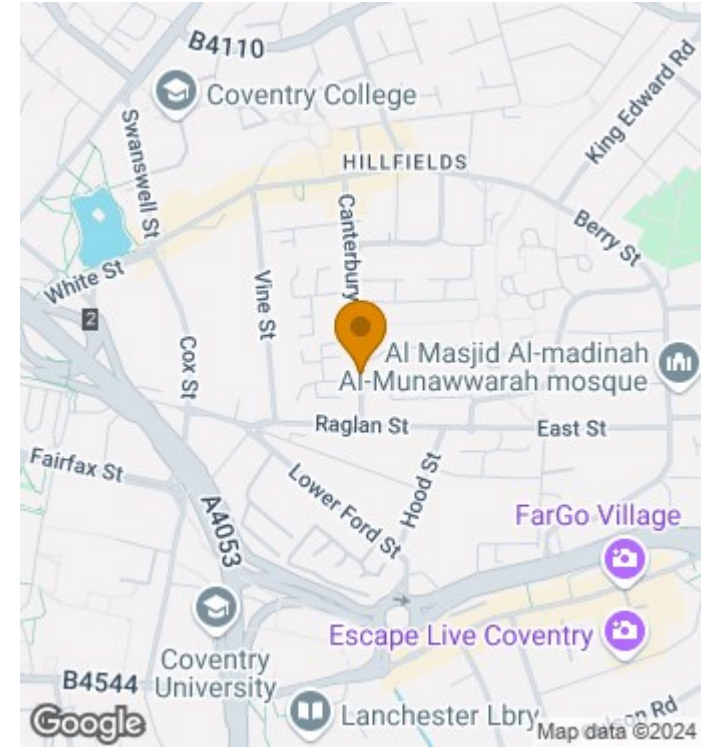


## Dimensions



# Floor Plan

# Location Map



Total area: sq ft

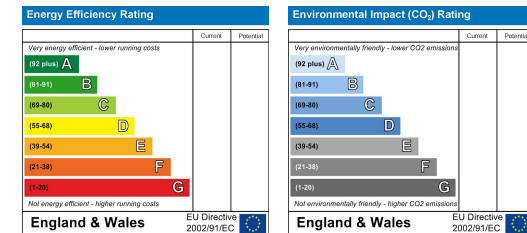
**Disclaimer**

**Services** All main services are understood to be available. Prospective purchasers are however recommended to verify connection with the appropriate suppliers.  
**Fixtures and Fittings** Excluded unless referred to in the sale particulars. Photographs are for illustrative layout purposes only and items shown are not included unless specifically mentioned in contract documentation. Please note: wide angle lens photography may be used, in certain instances, sometimes resulting in slight distortion.  
**Viewing** Strictly by arrangement through Shortland Horne.  
**Measurements** Room measurements and floor plans are for guidance purposes only and are approximate.  
**Purchase Procedure** It is essential to contact our offices before applying for a mortgage or arranging for a survey on this or any other Shortland Horne property to confirm current availability.  
**Money Laundering** We have in place procedures and controls, which are designed to forestall and prevent Money Laundering. If we suspect that a supplier, customer/client, or

employee is committing a Money Laundering offence as defined by the Proceeds of Crime Act 2002, we will in accordance with our legal responsibilities disclose the suspicion to the National Criminal Intelligence Service. Intending purchasers will be asked to produce identification documentation at a later stage and we would ask for your co-operation in order that there will be no delay in agreeing the sale.  
**Appliances** We would ask that you note that the property may contain appliances that would warrant checking for satisfactory working condition and you may wish to arrange this at your own expense prior to legal commitment.  
**Referrals** If Shortland Horne have introduced you to a Solicitor, Mortgage Advisor or Surveyor with whom we have a business relationship we are required by the Code of Conduct published by the NAEA propertymark to notify you that we will receive a referral fee. The fee for these services will vary depending on the transaction and intermediary may make to attract business.

Shortland Horne's Mortgage Advisor is Midland Financial Planning Limited, a partner practices of St. James's Place. For referring business to Midland Financial Planning Limited Shortland Horne will receive up to 50% of any commissions earned. You do not have to use the service of any of our providers and can choose to source the service from someone else. Any advice that is provided will be independent.

## EPC



Trusted Property Experts

02476 222 123

sales@shortland-horne.co.uk

@ShortlandHorne

shortland-horne.co.uk

Shortland-Horne