




SHORTLAND
HORNE

Trusted
Property Experts


SHORTLAND
HORNE

Medland Avenue
Finham CV3 6NW

Medland Avenue

CV3 6NW

A modern three bedroom extended semi detached family home situated in the highly sought after location of Finham. Within close proximity to Finham Park School, local shops and amenities this home would be ideal for a family looking to move into the area.

The ground floor offers a storm porch, an entrance hallway with doors leading off to a spacious lounge, a dining room with French doors opening out to the garden, an extended fully fitted kitchen, with space for a fridge/freezer and washing machine, there is also a very useful W/C.

On the first floor you will find a luxury family bathroom with a bath and a step in shower, two double bedrooms and a single bedroom complete this wonderful home.

To the front of the property there is a walled paved low maintenance garden, the rear is a fully enclosed and mainly laid to lawn there is also a double garage with an up and over door.

Shortland Horne strongly suggest an internal viewing to appreciate what this lovely home has to offer.









Dimensions

GROUND FLOOR

Porch

Hallway

Lounge

3.63m x 3.45m

Dining Room

4.04m x 3.18m

Kitchen

4.70m x 1.93m

W/C

FIRST FLOOR

Bedroom One

3.63m x 3.20m

Bedroom Two

3.48m x 3.45m

Bedroom Three

2.64m x 1.98m

Bathroom

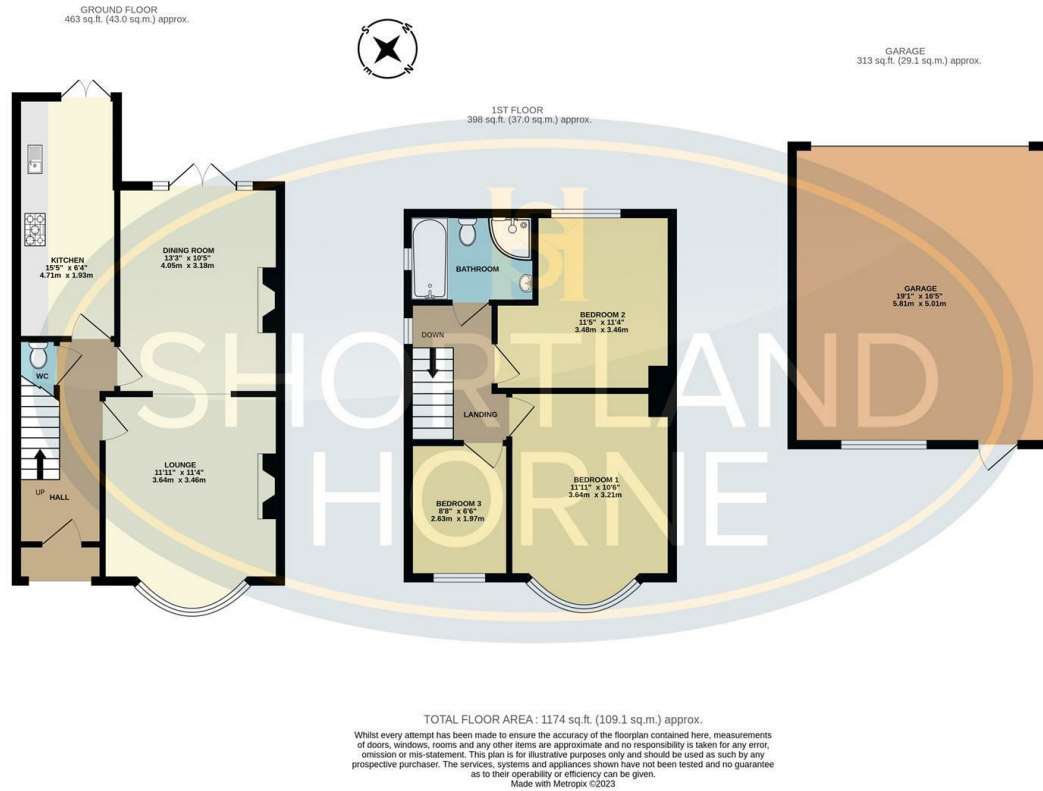
OUTSIDE

Garage

5.82m x 5.00m



Floor Plan



Total area: 1174.00 sq ft

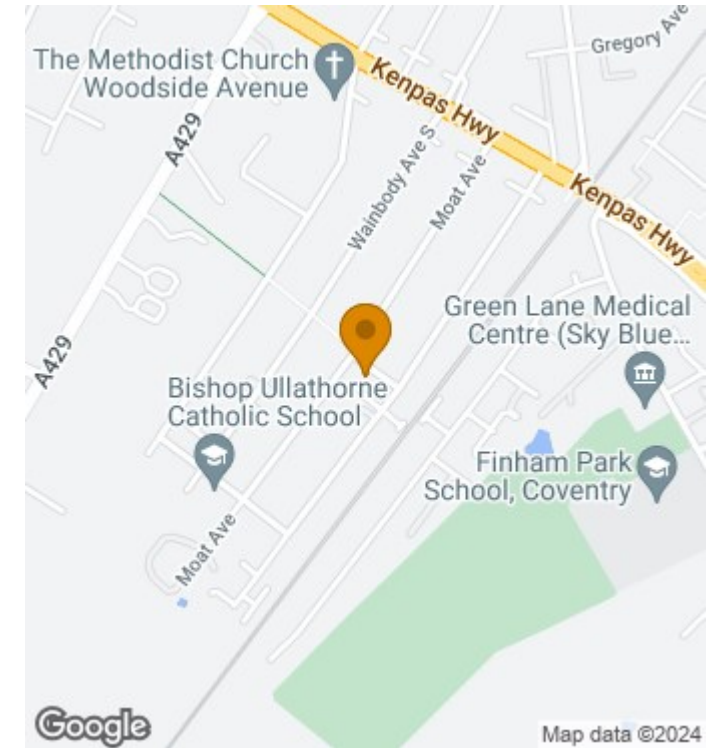
Disclaimer

Services All main services are understood to be available. Prospective purchasers are however recommended to verify connection with the appropriate suppliers.
Fixtures and Fittings Excluded unless referred to in the sale particulars. Photographs are for illustrative layout purposes only and items shown are not included unless specifically mentioned in contract documentation. Please note: wide angle lens photography may be used, in certain instances, sometimes resulting in slight distortion.
Viewing Strictly by arrangement through Shortland Horne.
Measurements Room measurements and floor plans are for guidance purposes only and are approximate.
Purchase Procedure It is essential to contact our offices before applying for a mortgage or arranging for a survey on this or any other Shortland Horne property to confirm current availability.
Money Laundering We have in place procedures and controls, which are designed to forestall and prevent Money Laundering. If we suspect that a supplier, customer/client, or

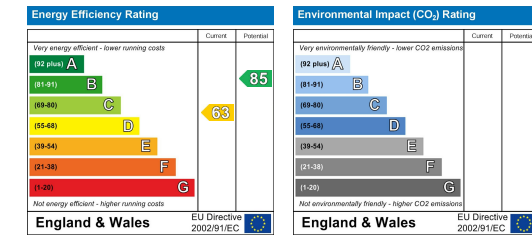
employee is committing a Money Laundering offence as defined by the Proceeds of Crime Act 2002, we will in accordance with our legal responsibilities disclose the suspicion to the National Criminal Intelligence Service. Intending purchasers will be asked to produce identification documentation at a later stage and we would ask for your co-operation in order that there will be no delay in agreeing the sale.
Appliances We would ask that you note that the property may contain appliances that would warrant checking for satisfactory working condition and you may wish to arrange this at your own expense prior to legal commitment.
Referrals If Shortland Horne have introduced you to a Solicitor, Mortgage Advisor or Surveyor with whom we have a business relationship we are required by the Code of Conduct published by the NAEA propertymark to notify you that we will receive a referral fee. The fee for these services will vary depending on the transaction and intermediary may make to attract business.

Shortland Horne's Mortgage Advisor is Midland Financial Planning Limited, a partner practices of St. James's Place. For referring business to Midland Financial Planning Limited Shortland Horne will receive up to 50% of any commissions earned. You do not have to use the service of any of our providers and can choose to source the service from someone else. Any advice that is provided will be independent.

Location Map



EPC



Trusted Property Experts

- 📞 02476 222 123
- ✉️ sales@shortland-horne.co.uk
- 🌐 shortland-horne.co.uk

- 📍 @ShortlandHorne
- 📍 Shortland-Horne