




SHORTLAND
HORNE

Trusted
Property Experts


SHORTLAND
HORNE

Water Lily Way
CV10 7SJ

Water Lily Way CV10 7SJ

A super four bedroom detached family home, situated close to local amenities and the A444 linking the motor way network.

The property in brief comprises; entrance hallway, ground floor W.C, office room, spacious lounge, separate dining room and modern fitted kitchen/ diner. To the first floor are four double bedrooms and a family bathroom. The master benefits from an en-suite shower room. To the front is a paved front garden set behind wrought iron fencing. To the rear is a paved patio area with lawn garden and single brick built garage.

Available From February 2024 EPC Rating:
Awaited Council Tax Band: E

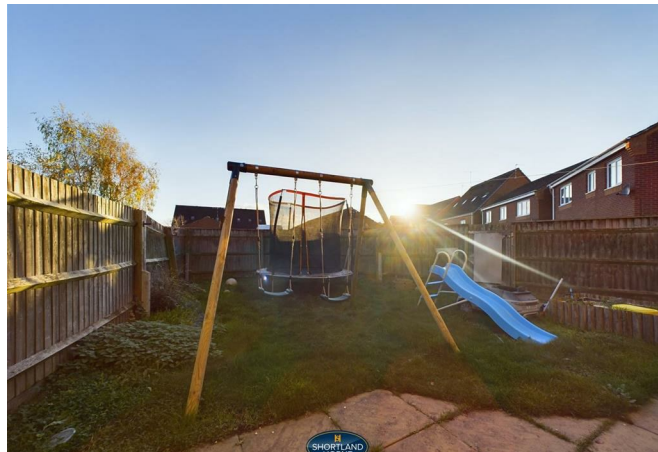
selling quality
property since 1995



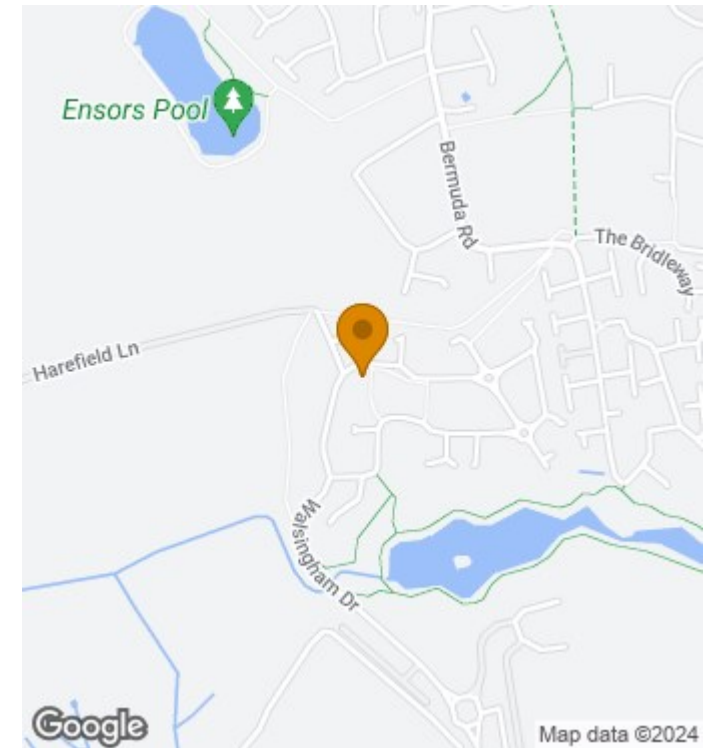




Dimensions



Location Map



EPC

Energy Efficiency Rating		Current	Potential
Very energy efficient - lower running costs			
(92 plus) A			
(81-91) B			
(69-80) C			
(55-68) D			
(39-54) E			
(21-38) F			
(1-20) G			
Not energy efficient - higher running costs			
England & Wales	EU Directive 2002/91/EC		

Environmental Impact (CO ₂) Rating		Current	Potential
Very environmentally friendly - lower CO ₂ emissions			
(92 plus) A			
(81-91) B			
(69-80) C			
(55-68) D			
(39-54) E			
(21-38) F			
(1-20) G			
Not environmentally friendly - higher CO ₂ emissions			
England & Wales	EU Directive 2002/91/EC		

Disclaimer

Services All main services are understood to be available. Prospective purchasers are however recommended to verify connection with the appropriate suppliers.

Fixtures and Fittings Excluded unless referred to in the sale particulars. Photographs are for illustrative layout purposes only and items shown are not included unless specifically mentioned in contract documentation. Please note: wide angle lens photography may be used, in certain instances, sometimes resulting in slight distortion.

Viewing Strictly by arrangement through Shortland Horne.

Measurements Room measurements and floor plans are for guidance purposes only and are approximate.

Purchase Procedure It is essential to contact our offices before applying for a mortgage or arranging for a survey on this or any other Shortland Horne property to confirm current availability.

Money Laundering We have in place procedures and controls, which are designed to forestall and prevent Money Laundering. If we suspect that a supplier, customer/client, or

employee is committing a Money Laundering offence as defined by the Proceeds of Crime Act 2002, we will in accordance with our legal responsibilities disclose the suspicion to the National Criminal Intelligence Service. Intending purchasers will be asked to produce identification documentation at a later stage and we would ask for your co-operation in order that there will be no delay in agreeing the sale.

Appliances We would ask that you note that the property may contain appliances that would warrant checking for satisfactory working condition and you may wish to arrange this at your own expense prior to legal commitment.

Referrals If Shortland Horne have introduced you to a Solicitor, Mortgage Advisor or Surveyor with whom we have a business relationship we are required by the Code of Conduct published by the NAEA propertymark to notify you that we will receive a referral fee. The fee for these services will vary depending on the transaction and intermediary may make to attract business.

Shortland Horne's Mortgage Advisor is Midland Financial Planning Limited, a partner practices of St. James's Place. For referring business to Midland Financial Planning Limited Shortland Horne will receive up to 50% of any commissions earned. You do not have to use the service of any of our providers and can choose to source the service from someone else. Any advice that is provided will be independent.

📞 02476 222 123

✉️ sales@shortland-horne.co.uk

🌐 shortland-horne.co.uk

🐦 @ShortlandHorne

📍 Shortland-Horne



Trusted
Property Experts