

42 School Lane, Chelmsford, CM1 7DR

£320,000

POSSESSORY TITLE - PLEASE CALL THE AGENT WHO WILL PROVIDE INFORMATION ** NO ONWARD CHAIN ** NEEDS MODERNISATION ** SEE AGENT'S NOTE ** LONG REAR GARDEN - POTENTIAL FOR OFF ROAD PARKING ** An older style semi detached house offering potential to extend (sttp). The accommodation includes. Ground floor: PORCH, HALL, SITTING ROOM, DINING ROOM, KITCHEN (needs refitting), LOBBY, WET ROOM. First floor: THREE BEDROOMS. The property has gas radiator heating and upvc double glazing.

LOCALITY INFORMATION

The property is close to Broomfield Primary School and a short distance from Broomfield hospital. There is a library on Broomfield Road and Broomfield food store is located at the end of School Lane. There are regular bus services in to Chelmsford city centre which has an excellent range of shopping and recreational facilities and the mainline railway station to London. The Angel public house is a short walk away on Broomfield Road. There are countryside walks close by.

AGENT'S NOTE

Mortgage options should be readily available for potential purchasers looking to reside in the property. However potential buy-to-let purchasers should be advised that the property is currently unlikely to be suitable for a buy-to-let mortgage. Any purchaser wishing to rent the property out shall need to be a cash buyer.

There are no deeds for this property and it is currently being sold with possessory title. Title absolute will be granted in around 6 years time.

PORCH

Part glazed door to porch. Windows and frosted part glazed door to hall.

ENTRANCE HALL

Stairs to first floor, door sitting room.

SITTING ROOM 11'9" x 10'11" (3.60 x 3.33)



Radiator, tiled fireplace, picture rails, upvc double glazed window to front.

FURTHER VIEW



DINING ROOM 13'6" x 10'11" (4.12 x 3.35)



Radiator, tiled fireplace, built in cupboard, alcove with fitted storage cupboards, deep under stair cupboard also housing the Worcester gas boiler, door to kitchen.

KITCHEN (needs refitting) 7'7" x 7'4" (2.32 x 2.24)



In need of refitting completely. Radiator, upvc double glazed window to side, access to lobby.

LOBBY



Deep recess of 6'11" ideal for fridge/freezer space, door to wet room and door to rear garden.

WET ROOM



Low level wc, wash hand basin, tiled walls to shower area, frosted upvc double glazed window.

LANDING

Access to roof space, double glazed window to side, doors to bedrooms.

BEDROOM ONE 11'10" x 11'1" (3.63 x 3.38)



Radiator, built in cupboard, upvc double glazed window to front.

BEDROOM TWO 11'0" x 8'9" (3.36 x 2.68)



Radiator, upvc double glazed window to rear.

BEDROOM THREE 8'2" x 5'8" (2.50 x 1.75)



Radiator, upvc double glazed window to rear.

OUTSIDE

The front garden is stoned with a stone wall to the front boundary. There is side access through to the rear garden.

LONG REAR GARDEN



The garden is laid to lawn with fenced and hedgerow boundaries to either side.

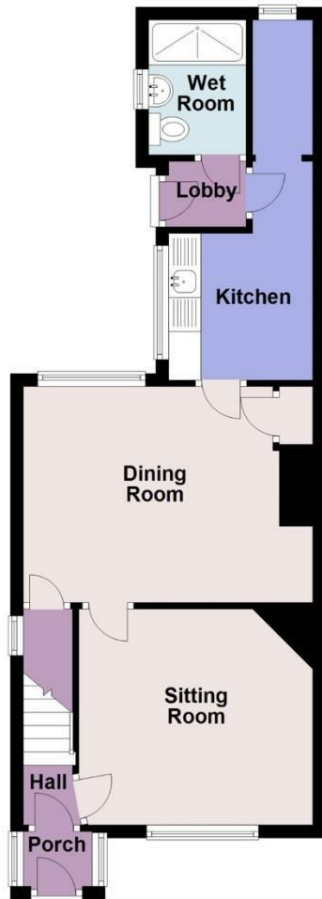
VIEW FROM LOWER GARDEN AREA



REAR ELEVATION

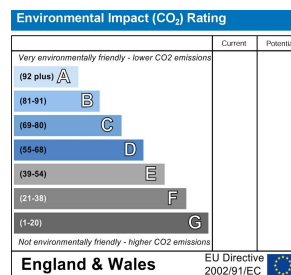
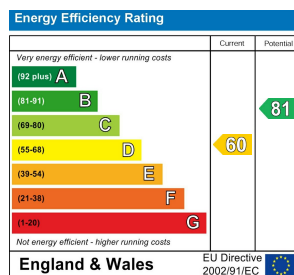
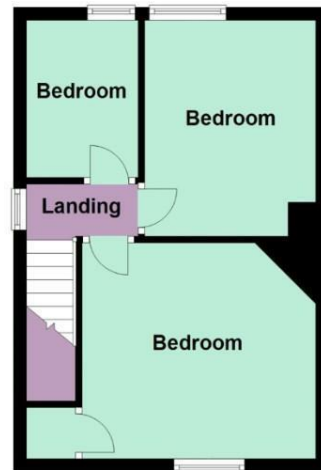


Ground Floor



APPROX INTERNAL FLOOR AREA 76 SQ M (820 SQ FT)
 This floorplan is for illustrative purposes only and is **NOT TO SCALE**
 All measurements are approximate **NOT** to be used for valuation purposes
 Copyright Leonard Gray 2024

First Floor



DISCLAIMER: You may download, store and use the material for your own personal use and research. You may not republish, retransmit, redistribute or otherwise make the material available to any party or make the same available on any website, online service or bulletin board of your own or of any other party or make the same available in hard copy or in any other media without the website owner's express prior written consent. At Leonard Gray, we aim to ensure our sales particulars are accurate and reliable. However, they do not constitute any offer or contract, nor are they to be taken as statements or representations of fact. No tests have been carried out by us in respect of services, systems or appliances contained in the specification. No guarantee as to their operating ability or efficiency is given. All measurements are a guide only and, therefore, are not necessarily precise. Fixtures and fittings, apart from those mentioned in the particulars, are to be agreed with the seller. Some particulars, please note, may also be awaiting the seller's approval. If clarification or further information is required, please contact us.