



THE WARNHAM

HOMES 18 & 19



THE BRAMBLES

Crowborough

THE WARNHAM SPECIFICATION



KITCHEN FEATURES

- The Shaker style kitchen is equipped with a range of wall and floor cabinets with laminate worktops, up stand and splash back.
- Fully integrated appliances to include a 4-zone induction hob, extractor, double oven, full height fridge/freezer and dishwasher.
- Utility is provided with a range of base units, laminate work surface, stainless steel sink and drainer with space for freestanding washing machine and condenser dryer.

BATHROOM, EN SUITES AND CLOAKROOM

- Contemporary white suites with chrome fittings.
- Cabinetry to cloakroom and bathroom.
- Heated white towel rail provided to the bathroom and en suites.
- Mirror and shaver socket provided to the bathroom and en suites.
- Ceramic wall tiles to the bathroom, en suites and cloakroom.

ELECTRICAL AND MULTIMEDIA

- White switch plates and sockets provided to all rooms.
- Double socket with USB inserts to be included in kitchen and each side of the bed position in bedroom 1 and one in each of the remaining bedrooms.
- Recessed down lights or pendant lighting to all rooms.
- TV and BT points are provided to selected rooms with a provision for Sky Q (box, dish and subscription not included).
- CAT6 cabling from master BT point (under stairs cupboard) to TV position in the living room and bedroom 1 to allow for hard wired internet access to these locations only. Other locations to rely on wireless internet access (subscription not included).
- EV car charging station provided within the single garage.
- Power provided to loft area.

CENTRAL HEATING AND HOT WATER

- An efficient gas-fired central heating system, via radiators with thermostatic controls, is provided in conjunction with a pressurised hot water cylinder.

PEACE OF MIND

- Double glazed PVCu windows and doors with multi point locking system.
- External lighting provided to all external doors.
- A mains fed smoke alarm is fitted to the hall and landing with a battery backup.

FINISHING TOUCHES

- Vertical five panel moulded internal doors with chrome fittings finished in a white gloss with half glazed doors to the kitchen/dining room and living room.
- French doors provided to the living room.
- White painted softwood staircase with oak handrail.
- All internal walls finished in white paint.
- Sliding wardrobe doors with shelf and hanging space provided to bedroom 1.
- All internal joinery will consist of attractive skirtings and architraves finished in a white gloss.
- Karndean flooring fitted plank style to the kitchen/dining room, hallway, utility, cloakroom, en suites and bathroom.

EXTERNAL FEATURES

- Landscaped front garden with feature planting.
- Turf to rear garden with an area of patio.
- External tap provided.
- External waterproof socket provided to the rear.
- Single garage to have manual opening door with power and light.

AFTERCARE

- Elivia Homes Eastern has a dedicated Customer Aftercare Department providing peace of mind for two years after you move into the property.

SERVICES

- Mains electricity, gas and drainage.
- BT Fibre Broadband speed up to 300mb (Subject to connection and subscription).

GUARANTEES

- All the homes come with a ten-year NHBC warranty.

TENURE

- Freehold.
- PEA = B



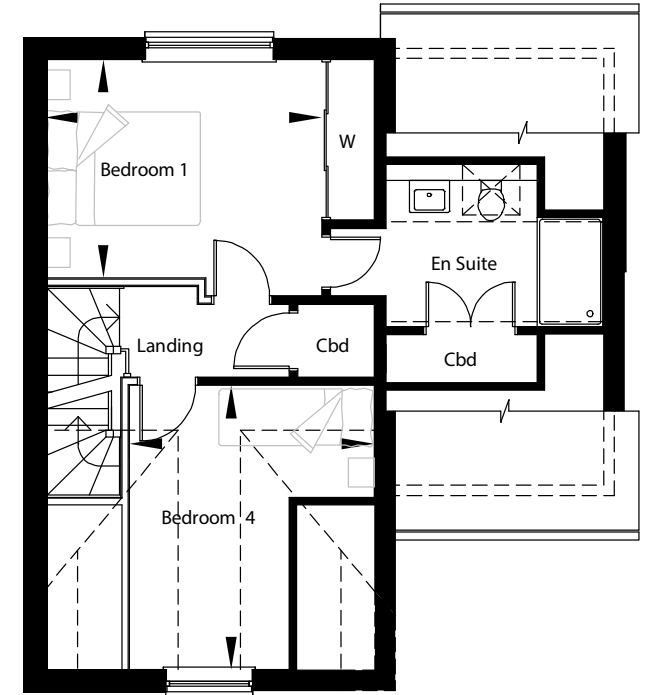
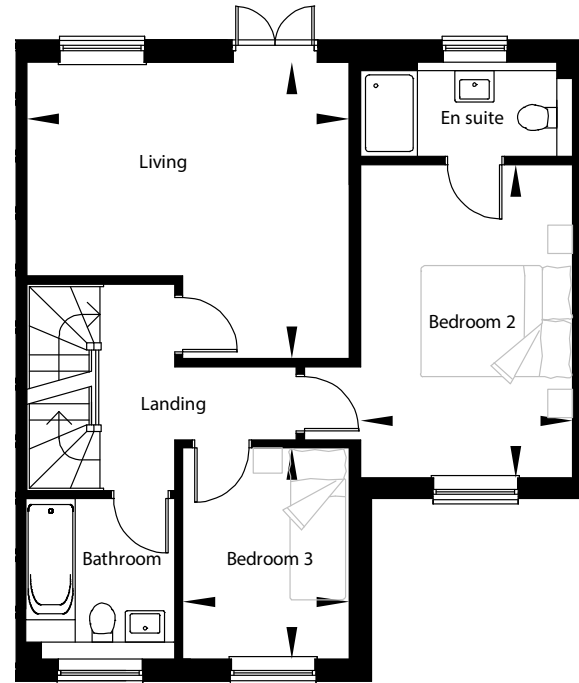
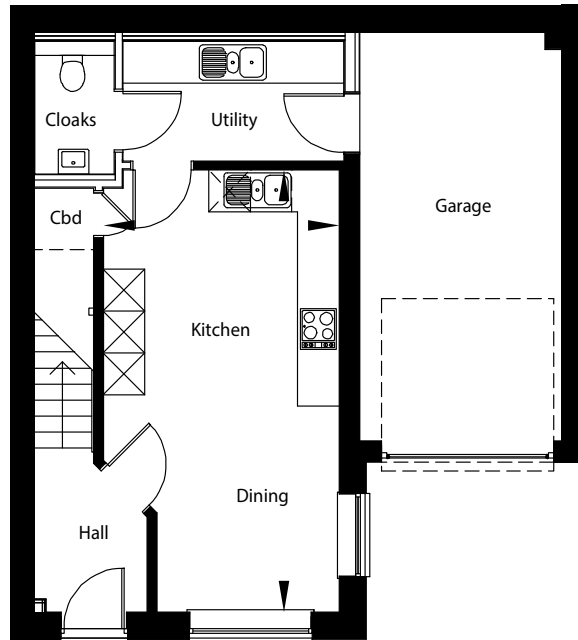
This brochure has been produced for your guidance only. Whilst every care has been taken, its accuracy cannot be guaranteed. Elivia Homes reserves the right to change the specification without prior notice.

The photographs shown within this brochure depict previous Show Homes by Elivia Homes and do not necessarily relate to this specific development or house type. The specification may therefore vary from that shown.

THE WARNHAM HOMES 18 & 19

4 BEDROOM SEMI-DETACHED TOWNHOUSE

(Please note plot 19 is handed)



GROUND FLOOR

Kitchen/Dining

6346mm x 3399mm
20'-10" x 11'-2"

FIRST FLOOR

Living

4518mm x 4161mm
14'-10" x 13'-8"

Bedroom 2

4395mm x 2975mm
14'-5" x 9'-9"

Bedroom 3

2961mm x 2329mm
9'-8" x 7'-7"

SECOND FLOOR

Bedroom 1

3805mm x 3001mm
12'-6" x 9'-10"

Bedroom 4

3899mm x 3361mm
12'-9" x 11'-0"

Whilst every attempt has been made to ensure the accuracy of the floor plan contained here, measurements of doors, windows, rooms and any other items are approximate and no responsibility is taken for any error, omission, or mis-statement. The plan is for illustrative purposes only and should be used as such by any prospective purchaser. The services, systems and appliances shown have not been tested and no guarantee as to their operability or efficiency can be given.

ELIVIA
— HOMES —



18 & 19 **THE WARNHAM**
4 BEDROOM SEMI-DETACHED TOWNHOUSE



THE BRAMBLES
Crowborough

**CONSUMER
CODE FOR
HOME BUILDERS**
www.consumercode.co.uk

tsi
APPROVED CODE
TRADINGSTANDARDS.UK

Protection for new-build home buyers

The Brambles, a small development consisting of 26 homes, situated in the rural countryside of Crowborough, East Sussex.

Hadlow Down Road
Crowborough
East Sussex
TN6 3RG

T: 01892 646440
E: TheBrambles@eliviahomes.co.uk

Please note plots 4-7 & 13-17 are Affordable Homes.