



Lark Hill, Alfreton, DE55 1DD

Asking Price Of £375,000



Property Description

ENTRANCE HALL

Door to side elevation with side panelled windows, radiator, loft access and built in storage cupboard.

LOUNGE/DINER

22' 1" x 16' 4" (6.73m x 4.98m) Spacious open plan lounge/diner with internal double doors with dual aspect window to the corner of the room, sliding patio doors to rear elevation leading to rear garden, gas feature fireplace and two radiators.

KITCHEN/DINER

12' 8" x 11' 2" (3.86m x 3.4m) Window to side and rear elevation, matching wall and base units with inset sink and drainer, built in electric oven and microwave, gas hob with extractor over, integrated dishwasher, tiled floor and radiator.

UTILITY ROOM

Base units with built in sink and drainer, space and plumbing for washing machine and tall fridge/freezer, door and window to side elevation, radiator, continued tiled floor and cupboard.

MASTER BEDROOM

17' 10" x 11' 8" (5.44m x 3.56m) Large double bedroom with fitted wardrobes and dressing table, box bay window to front elevation and window to side elevation and radiator.

BEDROOM TWO

11' 11" x 11' 3" (3.63m x 3.43m) Large double bedroom with fitted wardrobes, dressing table, window to front elevation and radiator.

BATHROOM





Four piece suite, single shower cubicle with mains fed shower, bath with shower over, wash basin over vanity unit, WC and obscure window to side elevation led lighting and radiator.

WC

WC with pedestal wash basin with obscure window to side elevation and radiator.

OUTSIDE

REAR GARDEN

Enclosed and private rear garden with lawned area, patio area and pebbled borders. Separate garden area which has been used as a vegetable patch, mature shrubs and planted borders with south facing orientation.

OFF ROAD PARKING

Off road parking for multiple vehicles with block paved driveway with lawned area.

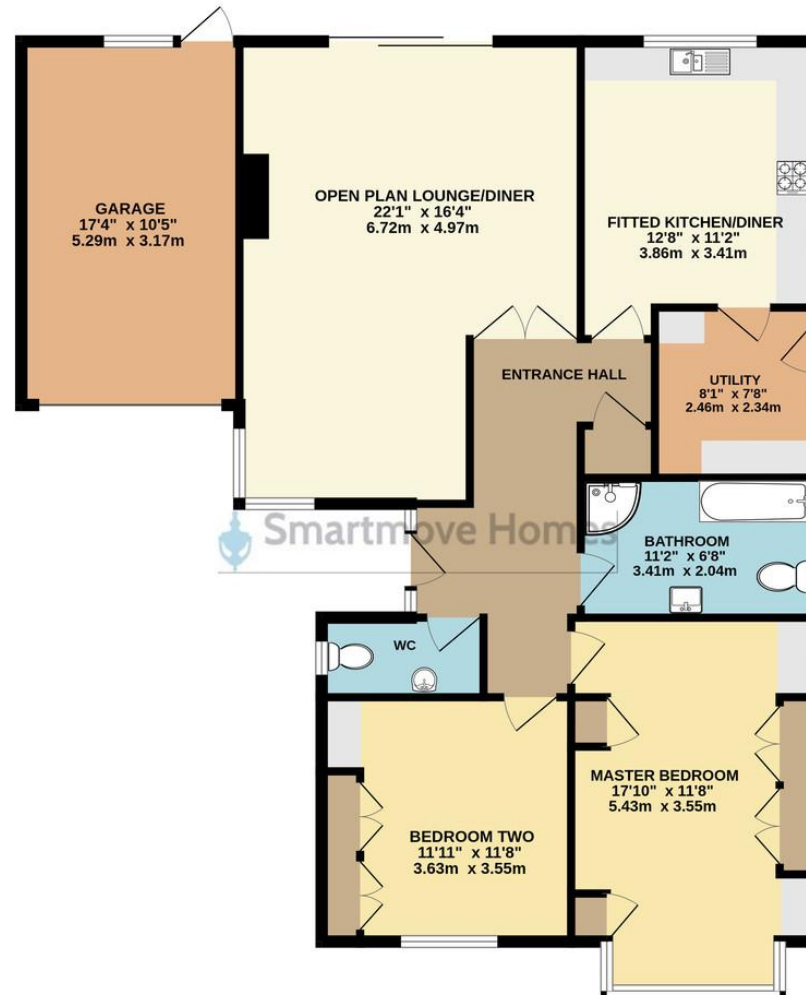
LARGE SINGLE GARAGE

Manual up and over door, window and door to rear elevation with electric and lighting.

OTHER INFORMATION



GROUND FLOOR
1271 sq.ft. (118.1 sq.m.) approx.



1 High Street, Ripley,
Derbyshire, DE5 3AA

www.smartmovehomes.co.uk
01773 570055
sales@smartmovehomes.co.uk

Agents Note: Whilst every care has been taken to prepare these sales particulars, they are for guidance purposes only. All measurements are approximate and are for general guidance purposes only and whilst every care has been taken to ensure their accuracy, they should not be relied upon and potential buyers are advised to recheck the measurements

