



Riversdale, Belper, DE56 2EU

Asking Price Of £269,950

- VIRTUAL VIEWING AVAILABLE - WELL PRESENTED THREE BEDROOM SEMI DETACHED FAMILY HOME WITH HUGE REAR GARDEN BACKING ONTO THE RIVER AMBER AND HAS AMPLE OFF ROAD PARKING - SMARTMOVE HOMES are delighted to bring to the market this excellent family home in Ambergate briefly comprising of a porch into entrance hallway, living room, dining room, downstairs bathroom suite and fitted kitchen to the ground floor. To the first floor landing there are three double bedrooms and a WC, outside there is a large rear garden which backs onto the river amber and forestry and to the front there is ample off road parking onto a private driveway. To book an internal inspection please contact SMARTMOVE HOMES BELPER as soon as

Property Description

- VIRTUAL VIEWING AVAILABLE - WELL PRESENTED THREE BEDROOM SEMI DETACHED FAMILY HOME WITH HUGE REAR GARDEN BACKING ONTO THE RIVER AMBER AND HAS AMPLE OFF ROAD PARKING - SMARTMOVE HOMES are delighted to bring to the market this excellent family home in Ambergate briefly comprising of a porch into entrance hallway, living room, dining room, downstairs bathroom suite and fitted kitchen to the ground floor. To the first floor landing there are three double bedrooms and a WC, outside there is a large rear garden which backs onto the river amber and forestry and to the front there is ample off road parking onto a private driveway. To book an internal inspection please contact SMARTMOVE HOMES BELPER as soon as possible.

GROUND FLOOR

PORCH

Door to front elevation.

ENTRANCE HALLWAY

Door to the front elevation into porch, radiator and stairs leading to the first floor with under stairs storage and window to the front elevation.

LIVING ROOM

Window to front elevation, central heating radiator and gas fire with hearth.

SEPARATE DINING ROOM

Central heating radiator, gas fire with hearth and feature opening looking into kitchen.

FITTED KITCHEN

Two windows to rear elevation, window and door to





side elevation, heated towel rail, matching wall and base units with complimentary worktops with inset stainless steel sink and drainer, space and plumbing for washing machine, under counter fridge and has space and plumbing for an all gas cooker.

DOWNSTAIRS SHOWER ROOM

Obscure window to rear elevation, triple walk in shower cubicle with electric shower, WC, wash basin and central heating radiator.

FIRST FLOOR LANDING

Window to the front elevation, storage cupboard, radiator and loft access.

MASTER BEDROOM

Window to rear elevation, built in airing cupboard housing boiler, built in cupboard and central heating radiator.

BEDROOM TWO

Window to front elevation, built in wardrobes and central heating radiator.

BEDROOM THREE

Window to front elevation and central heating radiator.

WC

Window to rear elevation, pedestal wash basin and WC.

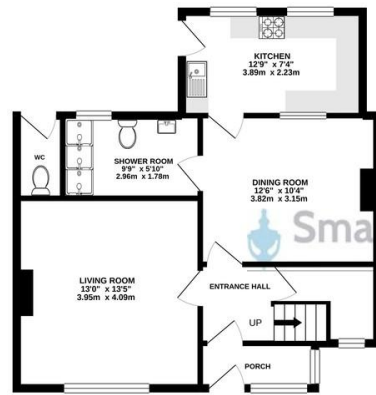
OUTSIDE

ENCLOSED REAR GARDEN

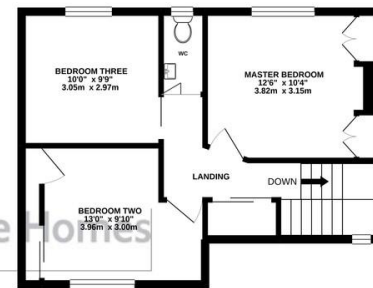
Fully enclosed large rear garden with multiple seating areas, laid lawn, planted borders, greenhouse, outside lighting and electrics, two wooden sheds and garden back onto the river amber with access via



GROUND FLOOR
563 sq.ft. (52.3 sq.m.) approx.



1ST FLOOR
446 sq.ft. (41.4 sq.m.) approx.



TOTAL FLOOR AREA: 1009 sq.ft. (93.8 sq.m.) approx.

Whilst every attempt has been made to ensure the accuracy of the floorplan contained here, measurements of doors, windows, rooms and any other items are approximate and no responsibility is taken for any error, omission or mis-statement. This plan is for illustrative purposes only and should be used as such by any prospective purchaser. The services, systems and appliances shown have not been tested and no guarantee as to their operability or efficiency can be given.
Made with Neopage ©2021

1 High Street, Ripley,
Derbyshire, DE5 3AA

www.smartmovehomes.co.uk
01773 570055
sales@smartmovehomes.co.uk

Agents Note: Whilst every care has been taken to prepare these sales particulars, they are for guidance purposes only. All measurements are approximate and for general guidance purposes only and whilst every care has been taken to ensure their accuracy, they should not be relied upon and potential buyers are advised to recheck the measurements