



FIELDHOUSE

T: +44 (0)20 7013 0770
F: +44 (0)20 7731 1964
PROPERTY@FHRES.CO.UK
FHRES.CO.UK



Flat 9, Blake Court 223-229 Rye Lane, Peckham, London, SE15 4TP

BRAND ONE BEDROOM APARTMENT IDEALLY LOCATED IN PECKHAM TOWN CENTRE. This beautifully presented, unfurnished apartment is finished to a high standard throughout.

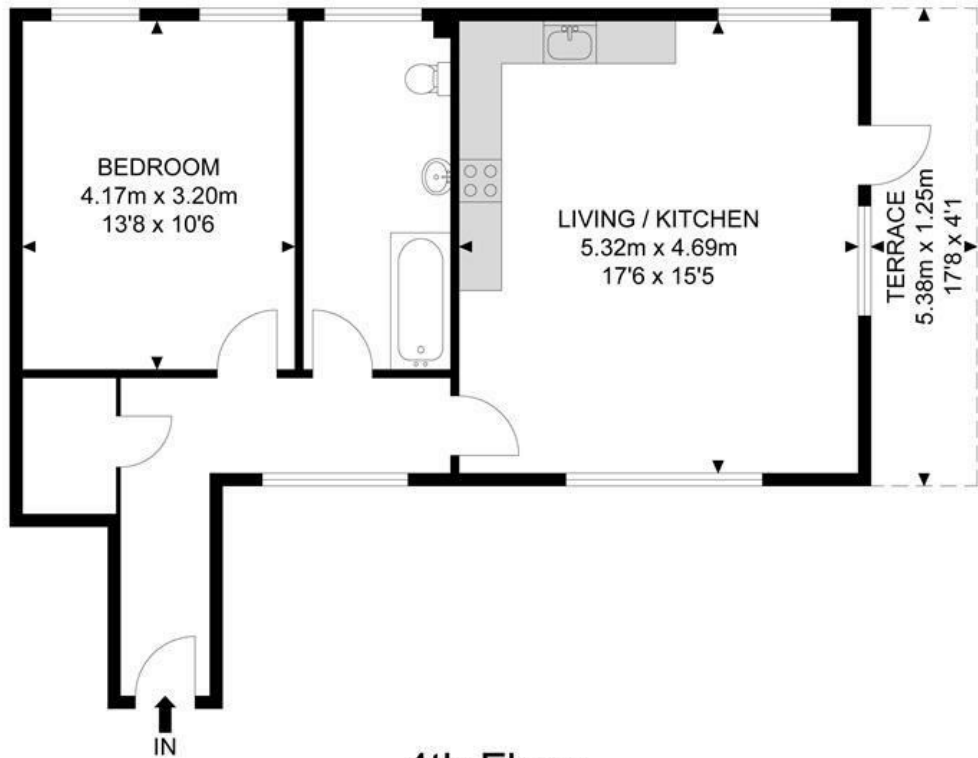
The apartment comprises a light and spacious double aspect open plan kitchen and living room leading to terrace, one double bedroom and bathroom with shower over bath. This property also benefits from gas central heating. Available June 2025.

- BRAND NEW
- ONE DOUBLE BEDROOM
- PECKHAM TOWN CENTRE
- OPEN PLAN
- TERRACE

Minimum Length of Tenancy: 12 Months
Council Tax: Southwark Borough Council
Council Tax Band: TBC

£2,150 PCM*

Blake Court



4th Floor



APPROX. GROSS INTERNAL FLOOR AREA 597.39 SQ FT / 55.50 SQM
APPROX. GROSS EXTERNAL FLOOR AREA 75.34 SQ FT / 7.0 SQM

Whilst every attempt has been made to ensure the accuracy of the floor plan contained here, measurements of doors, windows, rooms and any other items are approximated and no responsibility is taken for any error, omission or mis-statement. This plan is for illustrative purposes only and should be used as such by any prospective purchaser. The service, system and appliances shown have not been tested and no guarantee as to their operability or efficiency can be given.

© SpacePhoto

Photography and Floor Plan

Energy Efficiency Rating		
	Current	Potential
Very energy efficient - lower running costs		
(92 plus) A	84	
(81-91) B		
(69-80) C		
(55-68) D		
(39-54) E		
(21-38) F		
(1-20) G		
Not energy efficient - higher running costs		
England & Wales		
EU Directive 2002/91/EC		

Environmental Impact (CO ₂) Rating		
	Current	Potential
Very environmentally friendly - lower CO ₂ emissions		
(92 plus) A		
(81-91) B		
(69-80) C		
(55-68) D		
(39-54) E		
(21-38) F		
(1-20) G		
Not environmentally friendly - higher CO ₂ emissions		
England & Wales		
EU Directive 2002/91/EC		



FIELDHOUSE RESIDENTIAL LIMITED

Registered Address: 94 Wandsworth Bridge Road, London SW6 2TF
Registered in England No. 5097508 VAT No. GB 839 5267 87

