



FIELDHOUSE

T: +44 (0)20 7013 0770
F: +44 (0)20 7731 1964
PROPERTY@FHRES.CO.UK
FHRES.CO.UK



Flat 4 91a Rye Lane, Peckham, London, SE15 5EX

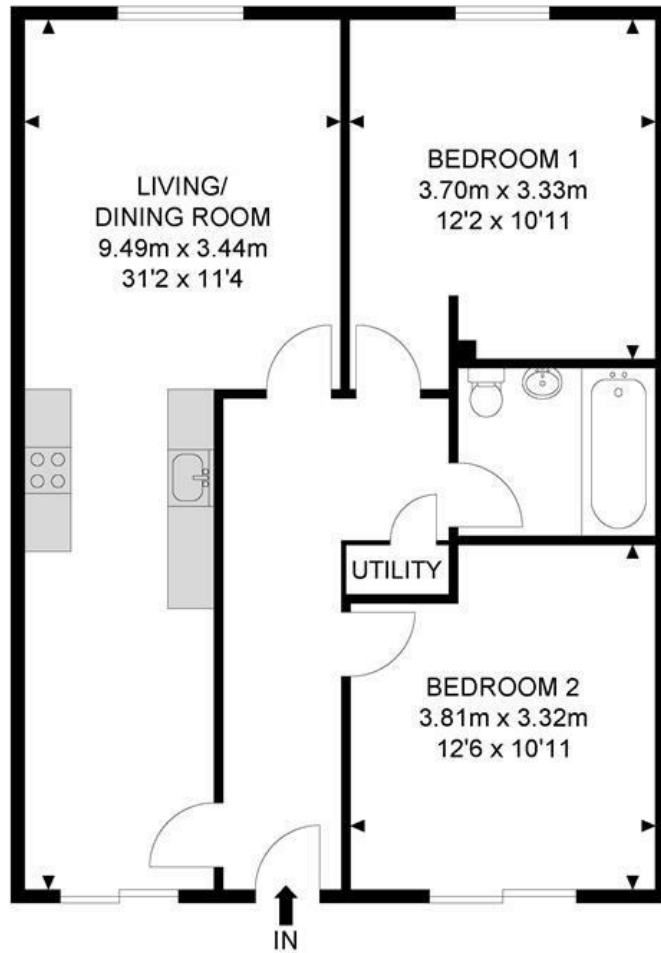
TOP FLOOR TWO BEDROOM APARTMENT IDEALLY LOCATED IN PECKHAM TOWN CENTRE. This very well presented unfurnished apartment is finished to a high standard throughout. The apartment comprises a light and spacious double aspect open plan kitchen and living room, two double bedrooms with fitted wardrobes and a family bathroom with shower over bath. This property also benefits from gas central heating! Available Immediately.

Minimum Length of Tenancy: 12 Months
Council Tax: Southwark Borough Council
Council Tax Band: D

- TWO DOUBLE BEDROOMS
- OPEN PLAN KITCHEN LOUNGE
- CENTRAL LOCATION
- ROOF TOP DEVELOPMENT
- MODERN DEVELOPMENT
- AVAILABLE IMMEDIATELY

£2,100 PCM*

Rye Lane



2nd Floor



APPROX. GROSS INTERNAL FLOOR AREA 701.80 SQ FT / 65.20 SQM

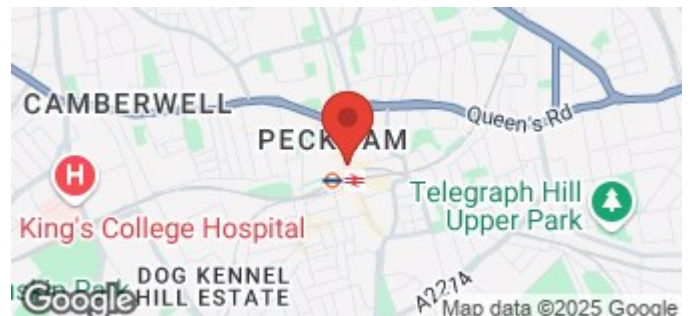
Whilst every attempt has been made to ensure the accuracy of the floor plan contained here, measurements of doors, windows, rooms and any other items are approximated and no responsibility is taken for any error, omission or mis-statement. this plan is for illustrative purposes only and should be used as such by any prospective purchaser. the service, system and appliances shown have not been tested and no guarantee as to their operability or efficiency can be given.

© SpacePhoto

Photography and Floor Plan

Energy Efficiency Rating		
	Current	Potential
Very energy efficient - lower running costs		
(92 plus) A		
(81-91) B		
(69-80) C		
(55-68) D		
(39-54) E		
(21-38) F		
(1-20) G		
Not energy efficient - higher running costs		
England & Wales	80	80
EU Directive 2002/91/EC		

Environmental Impact (CO ₂) Rating		
	Current	Potential
Very environmentally friendly - lower CO ₂ emissions		
(92 plus) A		
(81-91) B		
(69-80) C		
(55-68) D		
(39-54) E		
(21-38) F		
(1-20) G		
Not environmentally friendly - higher CO ₂ emissions		
England & Wales	85	85
EU Directive 2002/91/EC		



FIELDHOUSE RESIDENTIAL LIMITED

Registered Address: 94 Wandsworth Bridge Road, London SW6 2TF

Registered in England No. 5097508 VAT No. GB 839 5267 87

