



FIELDHOUSE

T: +44 (0)20 7013 0770
F: +44 (0)20 7731 1964
PROPERTY@FHRES.CO.UK
FHRES.CO.UK



2, 42a High Street, Watford, Hertfordshire, WD17 2BS

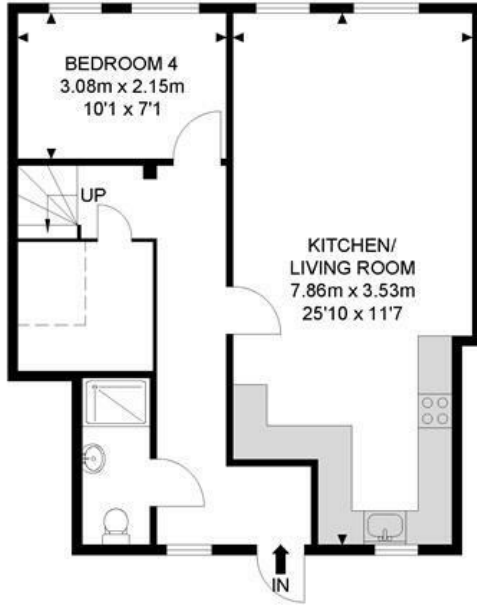
FOUR BEDROOM First & Second Floor Flat located within the heart of Watford Town Centre. The property benefits from open plan modern fitted kitchen and lounge with space for dining and relaxing, four double bedrooms, shower room and family bathroom with shower over bath. The property has hard wood floors throughout the open plan living areas and hallway and carpets in the bedrooms. Available Immediately.

- FOUR BEDROOMS
- BATHROOM WITH SHOWER OVER BATH
- BRIGHT AND SPACIOUS LOUNGE AND KITCHEN
- AVAILABLE IMMEDIATELY

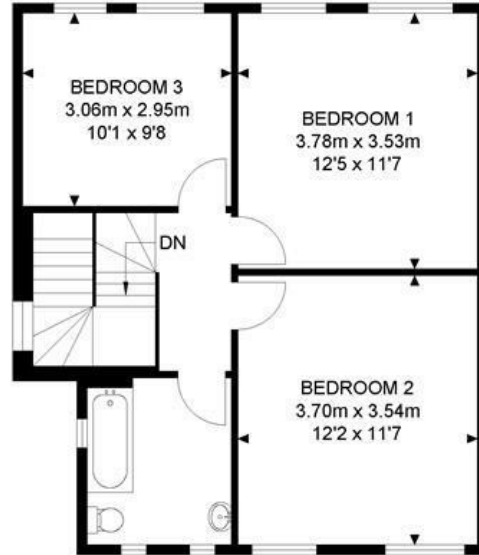
Minimum Length of Tenancy: 12 Months
Council Tax: Watford Council
Council Tax Band: C

£2,000 Per Month*

High Street



1st Floor



2nd Floor



APPROX. GROSS INTERNAL FLOOR AREA 1054.86 SQ FT / 98.0 SQM
 RESTRICTED HEIGHT AREA 12.91 SQ FT / 1.20 SQM

Whilst every attempt has been made to ensure the accuracy of the floor plan contained here, measurements of doors, windows, rooms and any other items are approximated and no responsibility is taken for any error, omission or mis-statement. This plan is for illustrative purposes only and should be used as such by any prospective purchaser. The service, system and appliances shown have not been tested and no guarantee as to their operability or efficiency can be given.

© SpacePhoto

Photography and Floor Plan

Energy Efficiency Rating		Current	Potential
Very energy efficient - lower running costs			
(92 plus) A			
(81-91) B			
(69-80) C			
(55-68) D		57	57
(39-54) E			
(21-38) F			
(1-20) G			
Not energy efficient - higher running costs			
England & Wales		EU Directive 2002/91/EC	

Environmental Impact (CO ₂) Rating		Current	Potential
Very environmentally friendly - lower CO ₂ emissions			
(92 plus) A			
(81-91) B			
(69-80) C			
(55-68) D		61	61
(39-54) E			
(21-38) F			
(1-20) G			
Not environmentally friendly - higher CO ₂ emissions			
England & Wales		EU Directive 2002/91/EC	



FIELDHOUSE RESIDENTIAL LIMITED

Registered Address: 94 Wandsworth Bridge Road, London SW6 2TF
 Registered in England No. 5097508 VAT No. GB 839 5267 87

