

Adams Glade, Ashingdon, SS4 3LA



£290,000

Situated in a quiet cul de sac position within a popular location within Ashingdon is this immaculate two bedroom end terraced house with modern fitted kitchen and bathroom, secluded rear garden and lawn area to the front with potential for own driveway. Within walking distance to local shops, schools and all local amenities.

No onward chain. Viewing advised. Our Ref: 10600.

Entrance via uPVC glazed entrance door to entrance porch.

ENTRANCE PORCH

Storage cupboard. Door to lounge area.

LOUNGE AREA 12' 10" x 10' 1" (3.91m x 3.07m)

Double glazed window to front aspect. Stairs to first floor accommodation. Full height walk in storage cupboard. Radiator. Coving to plastered ceiling. Wood effect flooring. Open plan through to dining area.



DINING AREA 10' 3" x 8' 1" (3.12m x 2.46m)

Double glazed patio doors providing access to conservatory. Wood effect flooring. Coving to plastered ceiling. Door through to kitchen.



KITCHEN 10' 3" x 7' 3" (3.12m x 2.21m)

Double glazed window to rear aspect. A comprehensive range of high gloss base and eye level units incorporating granite effect work surface with stainless steel sink drainer unit. Integrated electric oven with electric hob and stainless steel extractor chimney above. Space and plumbing for appliances. Tiled wall. Under stairs storage cupboard.



CONSERVATORY 14' 1" x 8' 4" (4.29m x 2.54m)

Double glazed French doors providing access to rear garden. Wood effect flooring.



FIRST FLOOR LANDING

BEDROOM ONE 11' 10" x 10' (3.61m x 3.05m)

Double glazed window to front aspect. Radiator. Coving to plastered ceiling.



BEDROOM TWO 10' 1" x 8' 4" (3.07m x 2.54m)

Velux windows to rear aspect. Radiator. Coving to plastered ceiling.



BATHROOM

Obscure Velux window. A three piece suite comprising panelled bath with chrome taps and shower over with full height glass shower screen, pedestal wash hand basin and low level wc. Tiled walls.



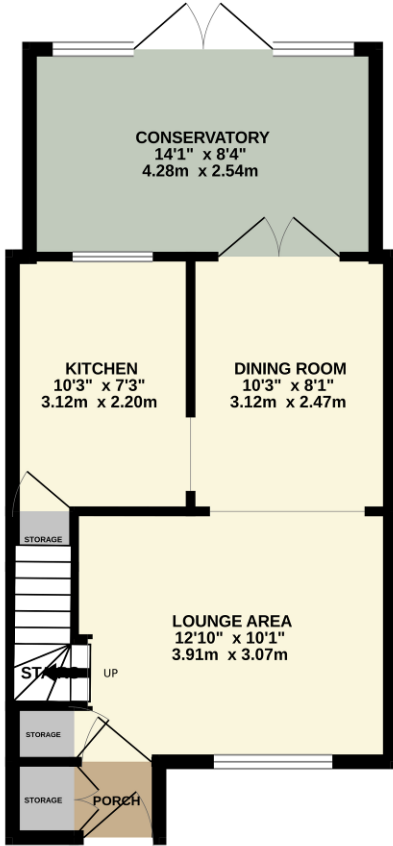
EXTERIOR.

The **REAR GARDEN** is mainly laid to lawn. Fencing to all boundaries. Spacious sideway with gate providing access to the front.

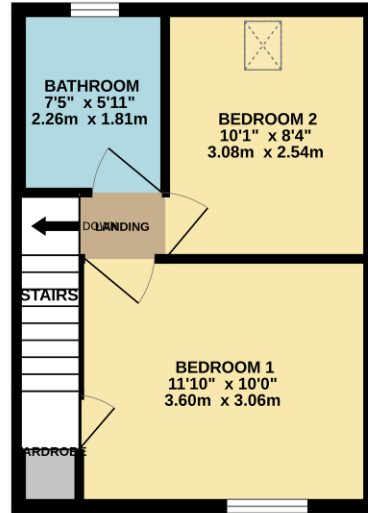


The **FRONT** has a lawn area with potential for off street parking.

GROUND FLOOR
447 sq.ft. (41.5 sq.m.) approx.



1ST FLOOR
287 sq.ft. (26.7 sq.m.) approx.



TOTAL FLOOR AREA : 734 sq.ft. (68.2 sq.m.) approx.

Whilst every attempt has been made to ensure the accuracy of the floorplan contained here, measurements of doors, windows, rooms and any other items are approximate and no responsibility is taken for any error, omission or mis-statement. This plan is for illustrative purposes only and should be used as such by any prospective purchaser. The services, systems and appliances shown have not been tested and no guarantee as to their operability or efficiency can be given.
Made with Metropix ©2023

Consumer Protection from Unfair Trading Regulations 2008.

The Agent has not tested any apparatus, equipment, fixtures and fittings or services and so cannot verify that they are in working order or fit for the purpose. A Buyer is advised to obtain verification from their Solicitor or Surveyor. References to the Tenure of a Property are based on information supplied by the Seller. The Agent has not had sight of the title documents. A Buyer is advised to obtain verification from their Solicitor. Items shown in photographs are NOT included unless specifically mentioned within the sales particulars. They may however be available by separate negotiation. Buyers must check the availability of any property and make an appointment to view before embarking on any journey to see a property.