



Windmill Drive, Croxley Green, Rickmansworth, WD3 3FF
Offers in excess: £500,000 Freehold

sewell &
gardner

About the property

Fabulous opportunity in highly desirable location.

Discover the potential of this 3-bedroom end terrace property on Windmill Drive, Croxley Green. In need of complete refurbishment, this home offers a blank canvas for customisation and modernisation.

Upon entering, the entrance hall leads to the main areas of the house. The kitchen awaits your personal touch, while the living room overlooks the garden. The property includes three spacious double bedrooms and a conveniently located family bathroom.

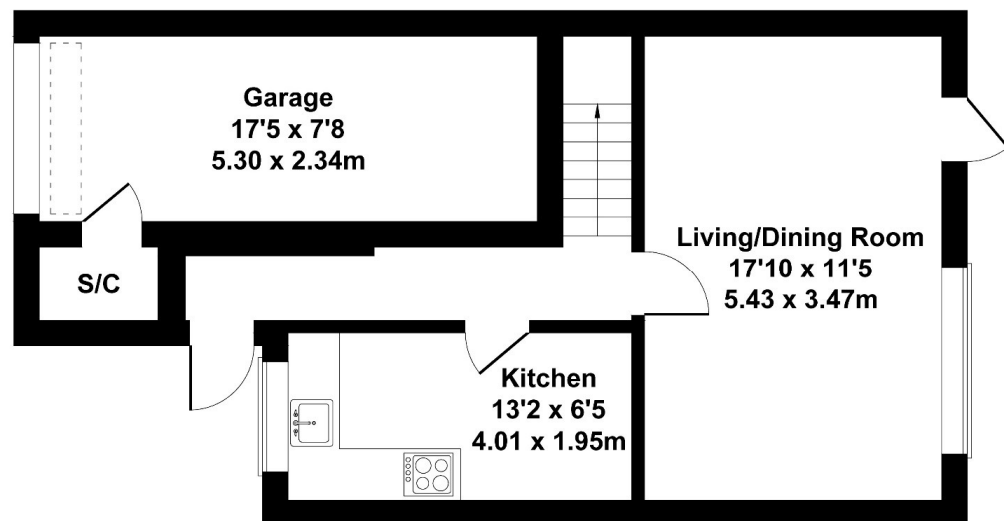
The property features an integral garage at the front and a driveway for at least two cars. The property also benefits from a private, south-facing rear garden. Double glazing throughout ensures energy efficiency and a quiet interior.

With potential for extension, subject to planning permission (STPP), this property is an excellent opportunity to create your dream home in a prime location. Don't miss the chance to transform this house into a stylish residence tailored to your tastes.

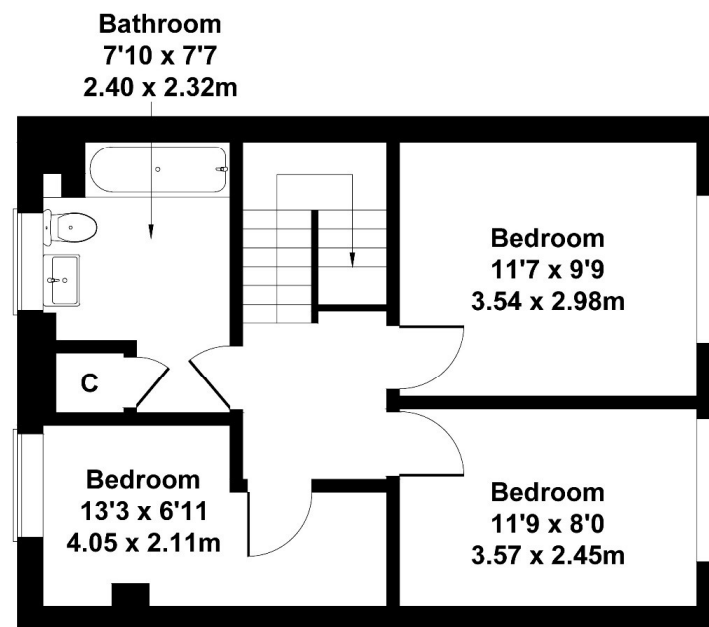


- Three bedrooms
- In need of complete refurbishment
- Driveway parking
- Walking distance to Croxley Station
- Close to good schools
- Potential for extension (STPP)

Approximate Gross Internal Area
1001 sq ft - 93 sq m



GROUND FLOOR



FIRST FLOOR

Not to Scale. Produced by The Plan Portal 2024
For Illustrative Purposes Only.

To view this property, contact us on-

T: 01923 776400 E: sgsales@sewellgardner.com

165-167 High Street, Rickmansworth, WD3 1AY



Local Authority: Three Rivers District Council

Council Tax: E

Approximate floor area: 1001 sq ft

Tenure: Freehold

Nearest Station: 0.8 miles to Croxley Station

Distance to Town Centre: 1.2 miles to Rickmansworth

Nearest Motorway: 2.6 miles to M25

Area Information

Croxley Green is a picturesque village located between Watford and Rickmansworth. The village has a variety of local shops and Croxley station is on the Metropolitan Line which provides a direct link to London in just 45 minutes, so it is ideal for those commuters who want to be close enough to London yet live in a small, friendly community.

The Green is a large green space on which many of the village's events take place throughout the year: classic car shows, Croxfest and the very popular Revels Fair that has been a tradition in the village since 1952, a family day out with arts and crafts, dance exhibitions and a whole host of games. The Green also hosts two of seven pubs in Croxley, The Coach and Horses and The Artichoke, both offering great food and live music events throughout the year.

There are a number of outstanding primary schools around the village, making it a hugely desirable location for families. Little Green and Harvey Road are two of the most popular with many of the pupils going on to Rickmansworth School Academy and the newly built Croxley Danes School for secondary education.



Every care has been taken to ensure that the details in this brochure represent an accurate description of the property. However, we wish to inform prospective purchasers that these sales particulars are a general guide and none of the statements or dimensions should be relied upon as statements of representation or fact. Transparency of referral fees: We're legally required to inform you that we receive referral income from the following solicitors and surveyors up to the value of £150.00 per transaction; Archer Rusby Solicitors LLP, Taylor Walton Solicitors, Hanney Dawkins & Jones Solicitors, The Partnership, & Woodward Surveyors. For financial services we recommend Severn Financial and one of our directors does have a vested interest in the business. We take an average referral fee of £90. We recommend these companies because we believe they offer an excellent service, however, you are not under any obligation to use them.

sewell &
gardner