



3, Millstone Cottage, Hathersage, Hope Valley, S32 1AQ

3, Millstone Cottage,

Hathersage, Hope Valley, S32 1AQ

Description

A pretty end of run cottage that occupies an enviable position, close to the village amenities yet just far enough out to avoid the crowds who are naturally drawn to this gorgeous village in the stunning Hope Valley. Hathersage is such a popular place to live. Well connected by train services that run through the Peaks into both Manchester and Sheffield's city centres and having an excellent range of local amenities that include shops, pubs, bars, restaurants and a number of cafes that combine to create a thriving social scene. Hathersage is also renowned for its outdoor swimming pool and the idyllic walks that can be accessed from your own doorstep. Millstone Cottages are a pretty run of terraces found in 'The Dale'. Number three offers accommodation over two floors and, being the end terrace, has a private rear garden and use of two outhouses, perfect for bikes and climbing gear etc... The property is being sold with no onward chain and would suit a broad range of buyer, including investors who may see it as a buy to let/holiday rental or perhaps downsizers or first time buyers who wish to stay in the village.

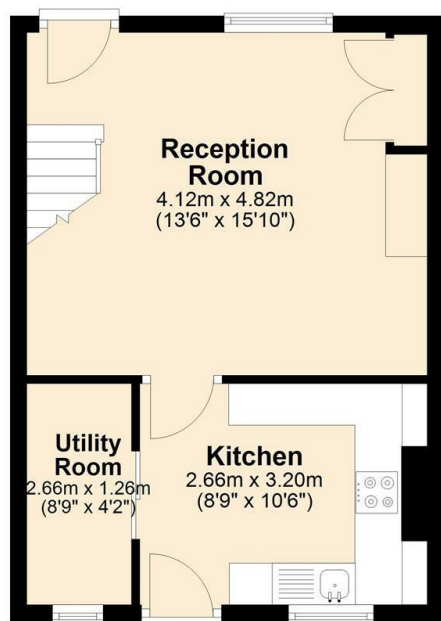
- Two bedrooms.
- Larger than average sitting room with a multi fuel stove.
- First floor shower room.
- Private rear garden with outbuildings for storage.
- Breakfast kitchen and a separate utility room/walk in pantry.
- No onward chain.
- Council Tax Band C.
- Gas central heating and double glazed throughout.
- Freehold.
- EPC rating D61.





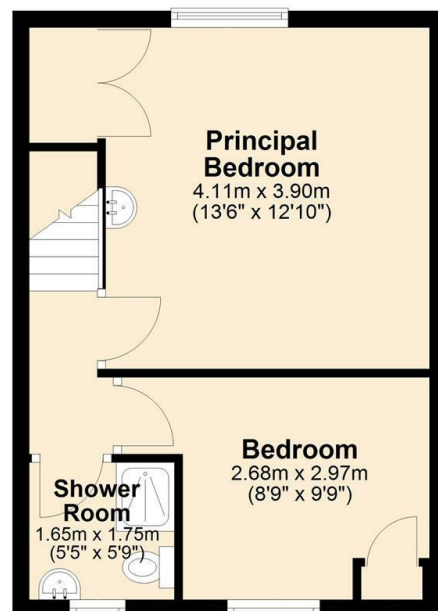
Ground Floor

Approx. 33.2 sq. metres (357.2 sq. feet)



First Floor

Approx. 33.2 sq. metres (357.2 sq. feet)



Total area: approx. 66.4 sq. metres (714.3 sq. feet)



Bakewell

3 Royal Oak Place
Matlock Street
Bakewell DE45 1HD
T: 01629 700699
E: bakewell@elr.co.uk

Banner Cross

888 Ecclesall Road
Banner Cross
Sheffield S11 8TP
T: 01142 683388
E: bannercross@elr.co.uk

Dore

33 Townhead Road
Sheffield
S17 3GD
T: 0114 2362420
E: dore@elr.co.uk

Hathersage

Main Road, Hathersage
Hope Valley
Derbyshire S32 1BB
T: 01433 651888
E: peakdistrict@elr.co.uk

Rotherham

149 Bawtry Road
Wickersley
Rotherham S66 2BW
T: 01709 917676
E: wickersley@elr.co.uk

**EADON
LOCKWOOD
& RIDDLE**
ESTD 1840