



Weavers Cottage, Water Lane, Eyam

Hope Valley, S32 5RG

A charming two bedroomed mid-terraced cottage beautifully positioned in the heart of Eyam and benefitting from a delightful rear garden. Occupying a central location within walking distance of various cafes and eateries, this pretty cottage has well presented accommodation arranged over two floors. The property is offered to the market with no onward chain and an internal viewing is essential.

The front door opens to a sitting room with solid wood flooring and front facing aspect. The focal point of the room is provided by a fireplace with a multi fuel stove. An oak latched door opens to the kitchen which features a range of panelled units with worktops over incorporating oven with four burner hob and extractor above, space for undercounter fridge freezer and washing machine. From the kitchen a door opens to the garden.



- Two bedroom cottage in the heart of Eyam
- Front facing double bedroom
- Delightful rear garden

- Sitting room with wood burning stove
- Single bedroom
- Excellent location in the heart of the village

- Well equipped kitchen
- Family bathroom



At first floor level a landing provides access to all rooms. Bedroom one is a double bedroom with a pleasant front facing aspect across Water Lane. Bedroom two is a rear facing single bedroom with rear facing garden aspect. The family bathroom with a white suite completes the accommodation and comprises WC, pedestal wash basin and bath with shower over.

Outside, to the rear of the property is a delightful garden laid to lawn with floral borders and patio area. The garden features a trellis and two lockable stores.

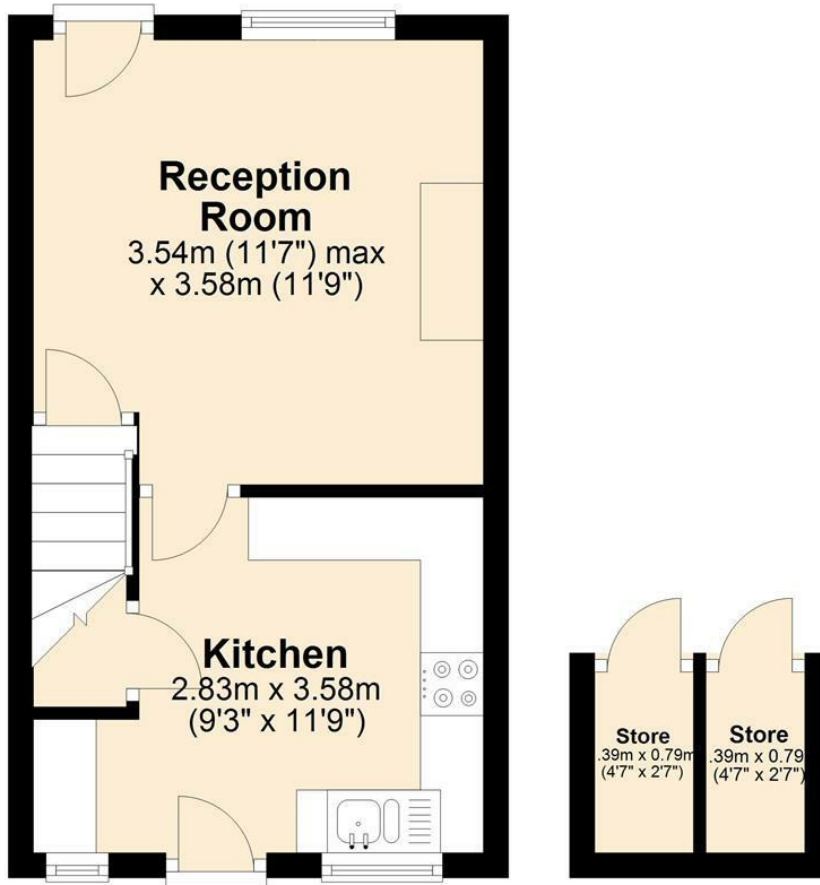






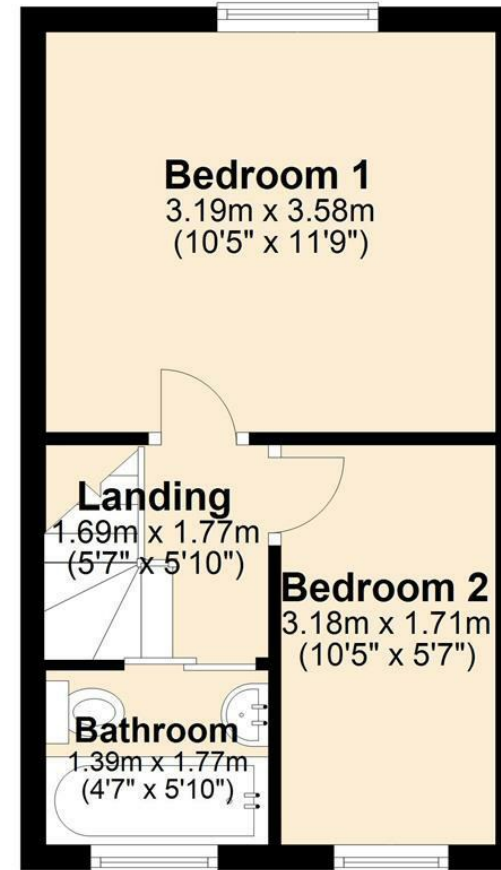
Ground Floor

Approx. 23.1 sq. metres (249.1 sq. feet)

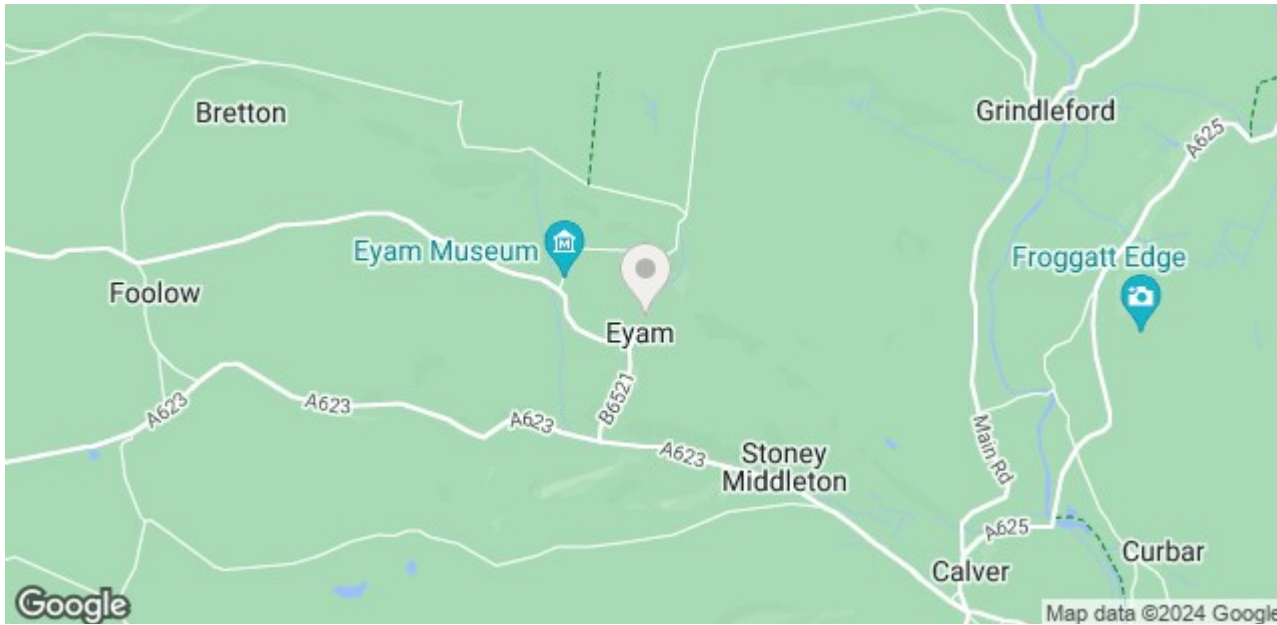


First Floor

Approx. 23.1 sq. metres (249.1 sq. feet)



Total area: approx. 46.3 sq. metres (498.2 sq. feet)



Bakewell
 3 Royal Oak Place
 Matlock Street
 Bakewell DE45 1HD
 T: 01629 700699
 E: bakewell@elr.co.uk

Banner Cross
 888 Ecclesall Road
 Banner Cross
 Sheffield S11 8TP
 T: 01142 683388
 E: bannercross@elr.co.uk

Dore
 33 Townhead Road
 Sheffield
 S17 3GD
 T: 0114 2362420
 E: dore@elr.co.uk

Hathersage
 Main Road, Hathersage
 Hope Valley
 Derbyshire S32 1BB
 T: 01433 651888
 E: peakdistrict@elr.co.uk

Rotherham
 149 Bawtry Road
 Wickersley
 Rotherham S66 2BW
 T: 01709 917676
 E: wickersley@elr.co.uk

**EADON
 LOCKWOOD
 & RIDDLE**
 ESTD 1840