



34 Queen Street

Ashford, TN23 1RG

Offers In Excess Of £280,000

A most attractive character home just off the town centre, in easy reach of a wide range of shopping and leisure facilities. This delightful home is offered for sale with no onward chain and comprises an entrance hall, sitting room, dining room, kitchen, basement, three bedrooms and bathroom/WC. The enclosed rear garden enjoys a sunny aspect leading on to a parking area for up to two vehicles. Ashford mainline station is only a few minutes walk making this an ideal location for commuters.

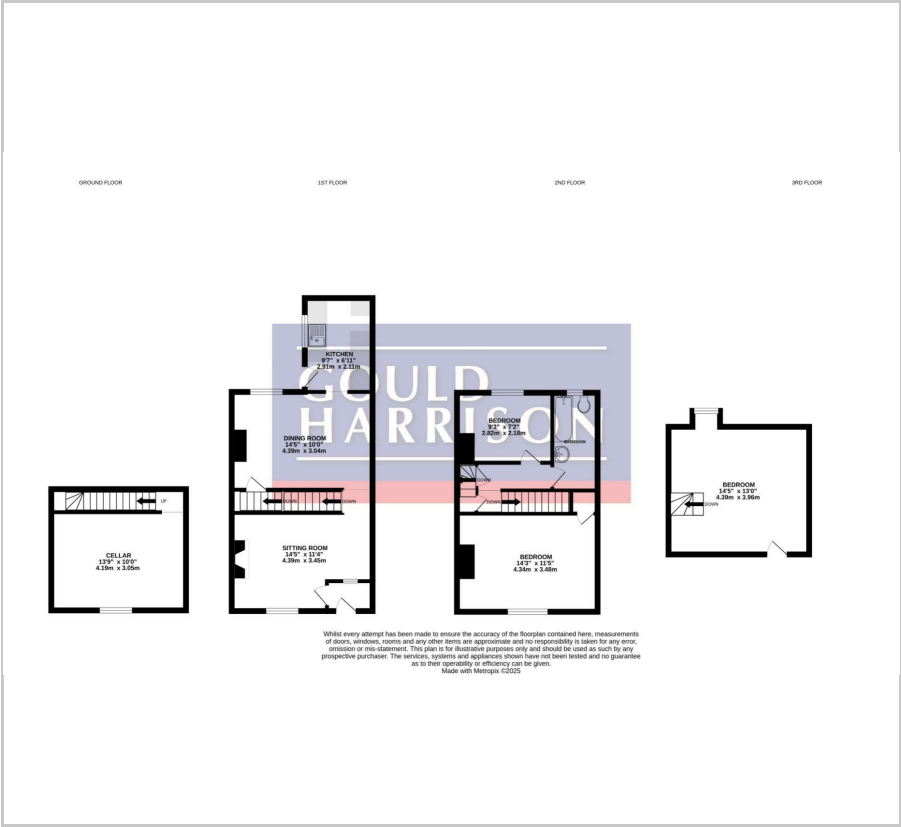
- ATTRACTIVE TERRACED HOME
- THREE BEDROOMS
- BASEMENT
- TWO RECEPTION ROOMS
- DRIVEWAY TO REAR PROVIDING OFF ROAD PARKING
- GAS CENTRAL HEATING
- TOWN CENTRE LOCATION
- NO ONWARD CHAIN

Viewing

Please contact our Ashford Office on 01233 646411 if you wish to arrange a viewing appointment for this property or require further information.



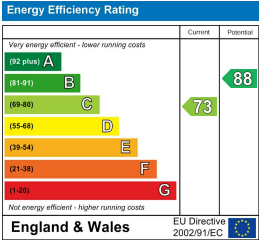
Floor Plan



Area Map



Energy Efficiency Graph



These particulars, whilst believed to be accurate are set out as a general outline only for guidance and do not constitute any part of an offer or contract. Intending purchasers should not rely on them as statements of representation of fact, but must satisfy themselves by inspection or otherwise as to their accuracy. No person in this firms employment has the authority to make or give any representation or warranty in respect of the property.