



167 Kingsnorth Road

Ashford, TN23 6NE

Price £279,950

Offered for sale with no onward chain is this pleasantly appointed semi detached home in easy reach of local schools, shops and amenities.

The property comprises an entrance hall, ground floor cloakroom, spacious kitchen/dining room, sitting room, two bedrooms, en suite, family bathroom and office. The rear garden is enclosed and laid for easy maintenance with the property also benefitting from gas central heating, double glazing and private driveway to the rear for several vehicles.

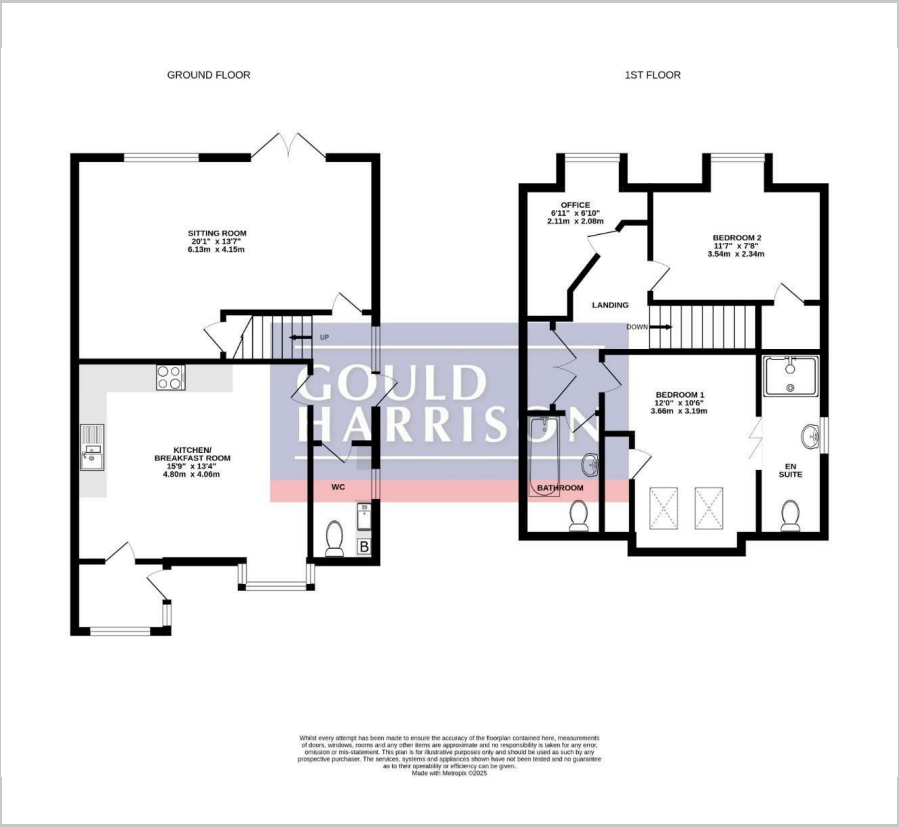
- SEMI DETACHED HOUSE
- TWO BEDROOMS
- LARGE KITCHEN/DINING ROOM
- DRIVEWAY FOR SEVERAL CARS TO THE REAR
- ENCLOSED GARDEN
- EN SUITE, FAMILY BATHROOM & GF CLOAKROOM
- GAS CENTRAL HEATING & DOUBLE GLAZING
- NO ONWARD CHAIN

Viewing

Please contact our Ashford Office on 01233 646411 if you wish to arrange a viewing appointment for this property or require further information.



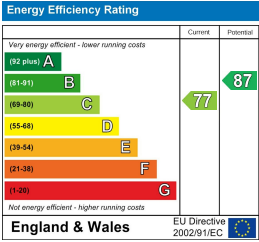
Floor Plan



Area Map



Energy Efficiency Graph



These particulars, whilst believed to be accurate are set out as a general outline only for guidance and do not constitute any part of an offer or contract. Intending purchasers should not rely on them as statements of representation of fact, but must satisfy themselves by inspection or otherwise as to their accuracy. No person in this firms employment has the authority to make or give any representation or warranty in respect of the property.