



33 Lodge Wood Drive

, Ashford, TN25 4GA

£1,600 Per Month

Three bedroom detached family home on the popular Orchard Heights development positioned within easy access to local amenities and junction 9 of the M20. To the ground floor the accommodation comprises entrance hall, cloakroom, lounge through dining room with access to enclosed rear garden, modern kitchen with electric oven and hob, plumbing for a washing machine, dishwasher and space for a fridge freezer, two double bedrooms, en-suite to master bedroom further single bedroom and family bathroom. Garage and driveway.

Minimum tenancy 6 calendar months
Available end of June
Security Deposit £1846.00
Council Tax - E (Ashford Borough council)
EPC - C Rating

Viewing

Please contact our Ashford Office on 01233 646411 if you wish to arrange a viewing appointment for this property or require further information.

- WELL APPPOINTED THREE BEDROOM FAMILY HOME
- DETACHED WITH GARAGE AND FRONT AND REAR GARDEN
- LOUNGE, DINING ROOM, MODERN KITCHEN
- CLOAKROOM AND FIRST FLOOR BATHROOM
- EN-SUITE TO MAIN BEDROOM
- NICELY PRESENTED THROUGHOUT
- SUPERB OPPORTUNITY
- MINIMUM TENANCY 6 CALENDAR MONTHS
- SECURITY DEPOSIT £1846



3



2

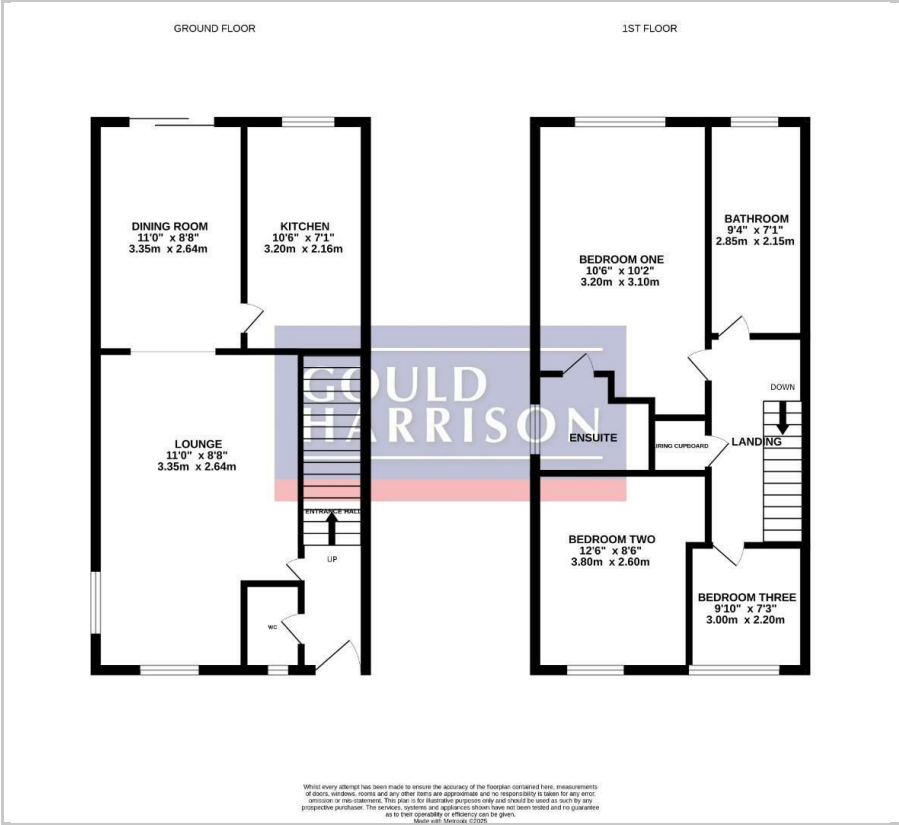


2



C

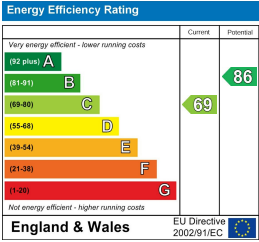
Floor Plan



Area Map



Energy Efficiency Graph



These particulars, whilst believed to be accurate are set out as a general outline only for guidance and do not constitute any part of an offer or contract. Intending purchasers should not rely on them as statements of representation of fact, but must satisfy themselves by inspection or otherwise as to their accuracy. No person in this firms employment has the authority to make or give any representation or warranty in respect of the property.