



32 Lower Denmark Road

Ashford, TN23 7SY

Guide Price £230,000

GUIDE PRICE £230,000 to £235,000

A spacious end of terrace house just a short walk from Ashford town centre and mainline station, offered for sale with no onward chain.

The property comprises an entrance hall, sitting room, dining room, kitchen, breakfast room, two double bedrooms and large first floor bathroom/WC.

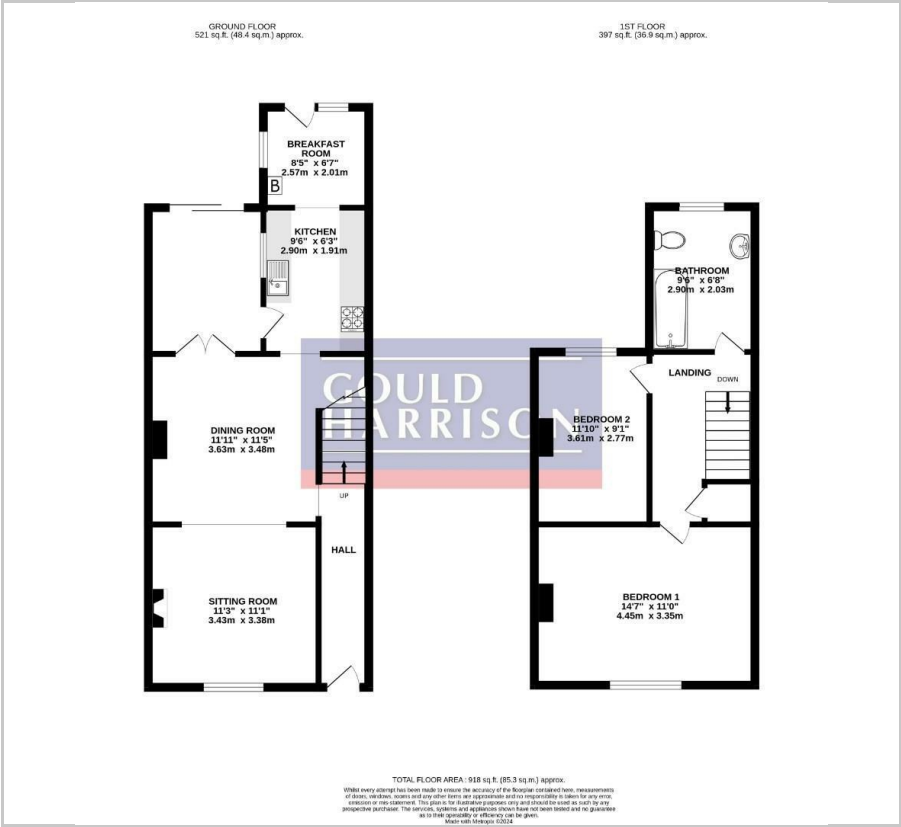
There is a generous garden to the rear with further benefits including gas fired central heating and double glazing.

Viewing

Please contact our Ashford Office on 01233 646411 if you wish to arrange a viewing appointment for this property or require further information.

- SOLD BY GOULD HARRISON
- TWO RECEPTION ROOMS
- TWO DOUBLE BEDROOMS
- ENCLOSED REAR GARDEN
- LARGE FIRST FLOOR BATHROOM
- SHORT WALK TO TOWN & STATION
- GAS CENTRAL HEATING
- DOUBLE GLAZING
- NO ONWARD CHAIN

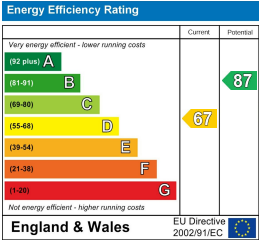
Floor Plan



Area Map



Energy Efficiency Graph



These particulars, whilst believed to be accurate are set out as a general outline only for guidance and do not constitute any part of an offer or contract. Intending purchasers should not rely on them as statements of representation of fact, but must satisfy themselves by inspection or otherwise as to their accuracy. No person in this firm's employment has the authority to make or give any representation or warranty in respect of the property.