



## 17 Dragonfly Close

Ashford, TN23 5GH

Price £275,000

Modern two bedroom semi detached bungalow within walking distance of local amenities. The property comprises entrance hall, kitchen, sitting/dining room, two bedrooms and shower room

The pleasant corner plot provides nicely enclosed gardens to the front and back with further benefits including gas central heating, double glazing, garage and parking.

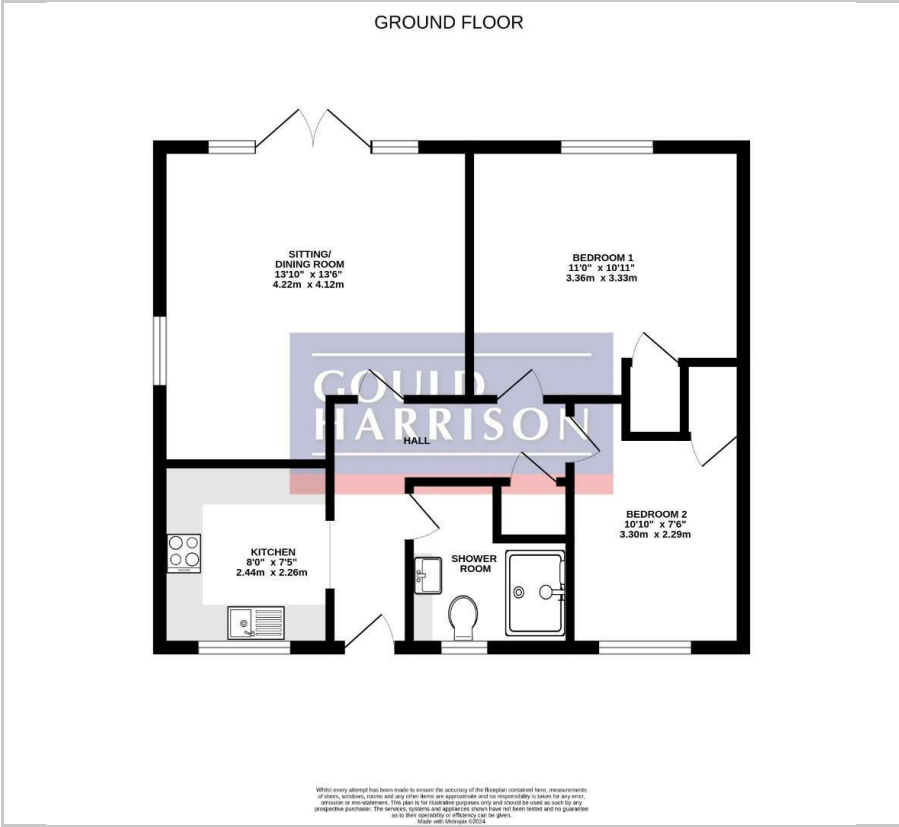
- SOLD BY GOULD HARRISON
- TWO BEDROOMS
- NICELY ENCLOSED GARDENS TO FRONT & BACK
- GARAGE & PARKING SPACE
- WALKING DISTANCE OF LOCAL AMENITIES
- NO ONWARD CHAIN

### Viewing

Please contact our Ashford Office on 01233 646411 if you wish to arrange a viewing appointment for this property or require further information.



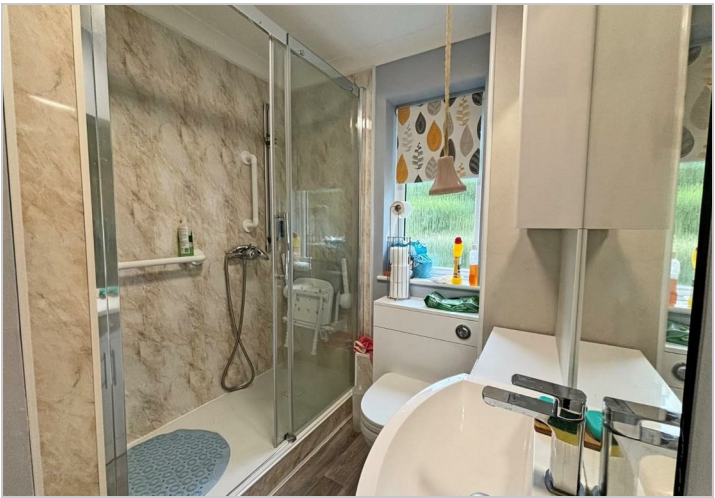
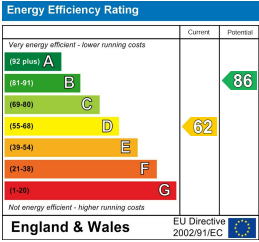
Floor Plan



Area Map



Energy Efficiency Graph



These particulars, whilst believed to be accurate are set out as a general outline only for guidance and do not constitute any part of an offer or contract. Intending purchasers should not rely on them as statements of representation of fact, but must satisfy themselves by inspection or otherwise as to their accuracy. No person in this firms employment has the authority to make or give any representation or warranty in respect of the property.