



Flat 8 Harwood House

Oxenturn Road, Wye, Ashford, TN25 5BG

£725 Per Month

One bedroom first floor studio flat situated in the village of Wye with its local amenities, railway station, Public House, Church and bus route. The accommodation comprises open plan lounge/kitchen/bedroom with electric oven and fridge, utility with washing machine and bathroom with shower.

Security deposit £836.00

Sorry but no pets, smokers or children accepted

Available early November

Council Tax - A

EPC - D

- STUDIO FLAT
- AVAILABLE EARLY NOVEMBER
- VILLIAGE LOCATION
- SORRY NO PETS AND NO CHILDREN
- EPC D
- COUNCIL TAX BAND A
- DEPOSIT £836

Viewing

Please contact our Ashford Office on 01233 646411 if you wish to arrange a viewing appointment for this property or require further information.



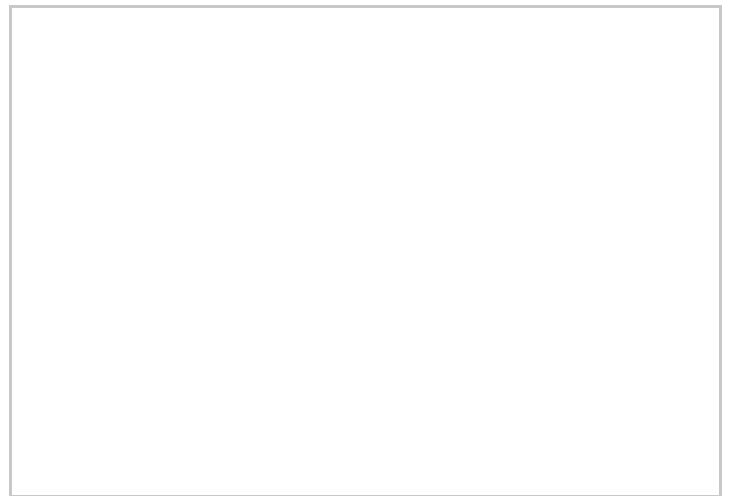
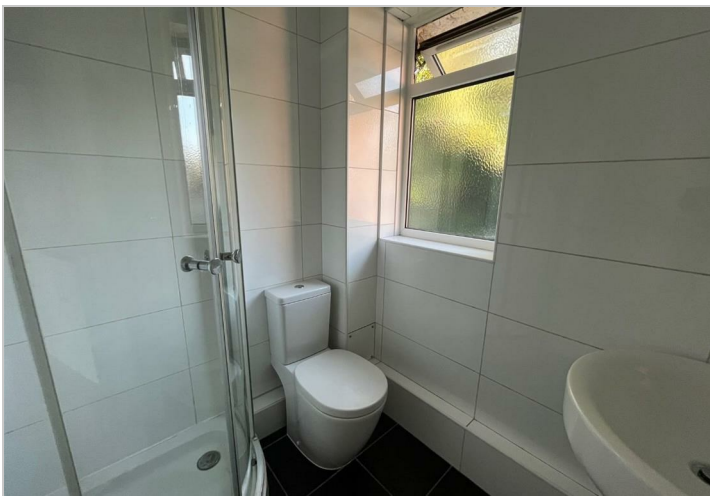
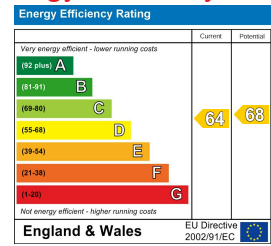
Floor Plan



Area Map



Energy Efficiency Graph



These particulars, whilst believed to be accurate are set out as a general outline only for guidance and do not constitute any part of an offer or contract. Intending purchasers should not rely on them as statements of representation of fact, but must satisfy themselves by inspection or otherwise as to their accuracy. No person in this firm's employment has the authority to make or give any representation or warranty in respect of the property.

1 Middle Row, Ashford, Kent, TN24 8SQ

Tel: 01233 646411 Email: sales@gouldharrison.co.uk