



23 Loudon Court

Godinton Park, TN23 3NE

Price £140,000

A first floor maisonette on the popular Loudon Court retirement complex (over 55s).

The accommodation comprises an entrance hall with stairs to the first floor, sitting room, kitchen, two bedrooms and bathroom.

The property benefits from gas central heating, residents parking and is available for sale with no onward chain.

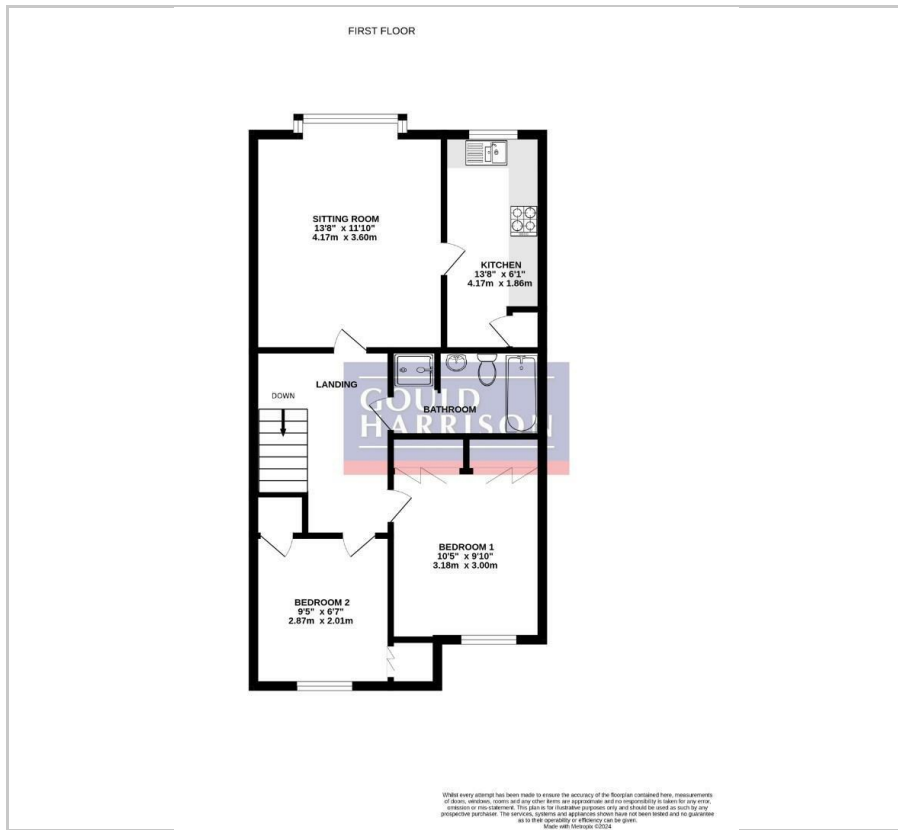
- FIRST FLOOR MAISONETTE
- RETIREMENT COMPLEX (OVER 55's)
- TWO BEDROOMS
- GAS CENTRAL HEATING
- NO ONWARD CHAIN
- RESIDENTS PARKING

Viewing

Please contact our Ashford Office on 01233 646411 if you wish to arrange a viewing appointment for this property or require further information.



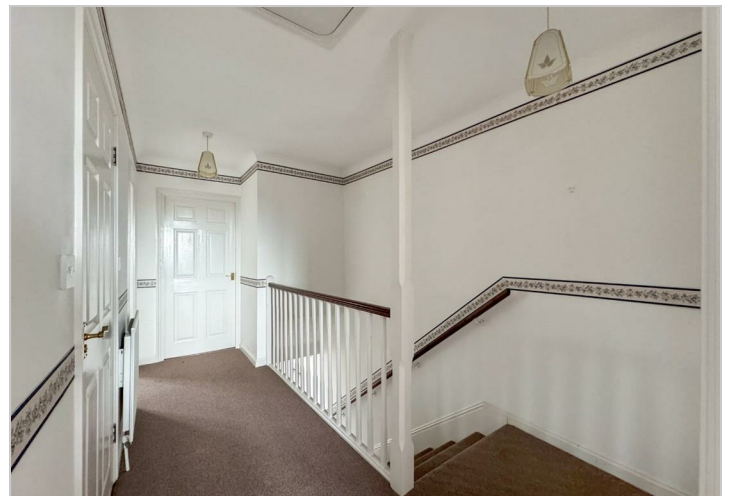
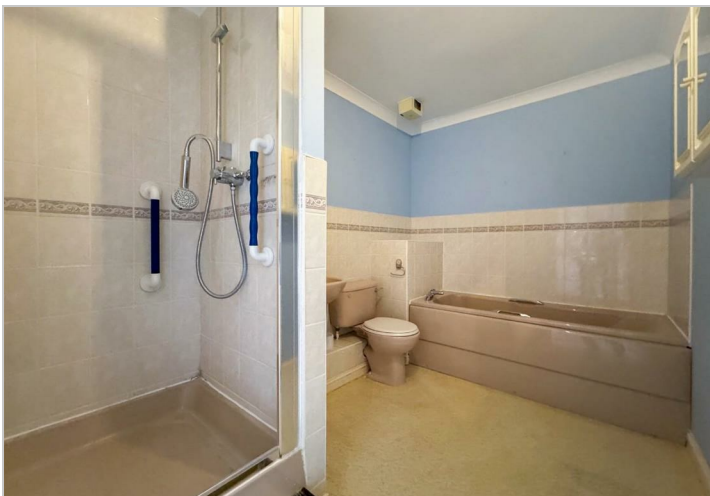
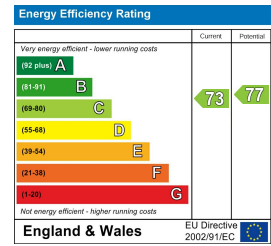
Floor Plan



Area Map



Energy Efficiency Graph



These particulars, whilst believed to be accurate are set out as a general outline only for guidance and do not constitute any part of an offer or contract. Intending purchasers should not rely on them as statements of representation of fact, but must satisfy themselves by inspection or otherwise as to their accuracy. No person in this firm's employment has the authority to make or give any representation or warranty in respect of the property.