



Little Purlands Faversham Road

Boughton Aluph, Ashford, TN25 4PQ

Price £555,000

A well presented and spacious detached family home in the popular Kennington area.

The pleasantly appointed accommodation comprises an inviting entrance hall, sitting room with open fire, dining room, kitchen, utility, breakfast room, cloakroom, conservatory. To the first floor are four double bedrooms, large bathroom and separate shower room/WC.

The rear garden enjoys an open aspect with the property also benefitting from gas fired central heating, double glazing, garage and driveway. Local schools, shops and transport links are all within easy reach along with some lovely countryside walks.

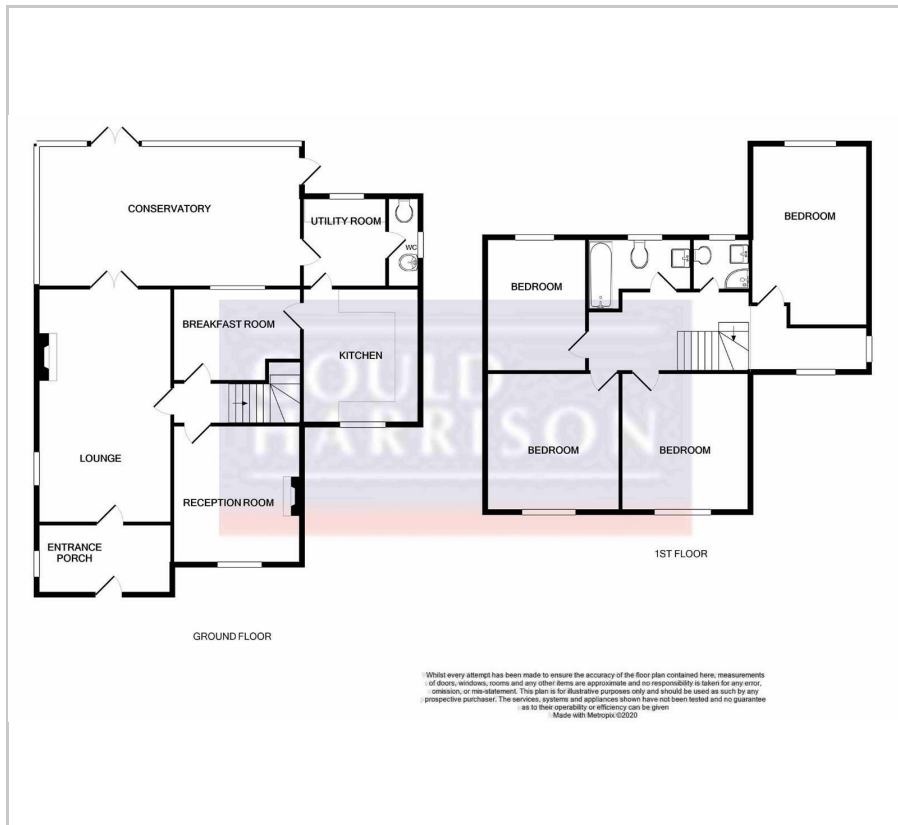
- SPACIOUS DETACHED HOUSE
- FOUR BEDROOMS
- KITCHEN & BREAKFAST ROOM
- LARGE CONSERVATORY
- UTILITY ROOM & CLOAKROOM
- BATHROOM & SEPARATE SHOWER ROOM
- GENEROUS REAR GARDEN
- GAS CENTRAL HEATING
- DOUBLE GLAZING

Viewing

Please contact our Ashford Office on 01233 646411 if you wish to arrange a viewing appointment for this property or require further information.



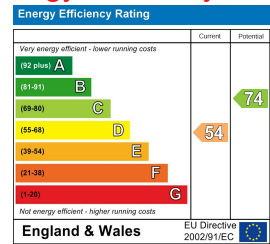
Floor Plan



Area Map



Energy Efficiency Graph



These particulars, whilst believed to be accurate are set out as a general outline only for guidance and do not constitute any part of an offer or contract. Intending purchasers should not rely on them as statements of representation of fact, but must satisfy themselves by inspection or otherwise as to their accuracy. No person in this firm's employment has the authority to make or give any representation or warranty in respect of the property.

1 Middle Row, Ashford, Kent, TN24 8SQ

Tel: 01233 646411 Email: sales@gouldharrison.co.uk