

38 Upper Denmark Road, Ashford, Kent, TN23 7TZ

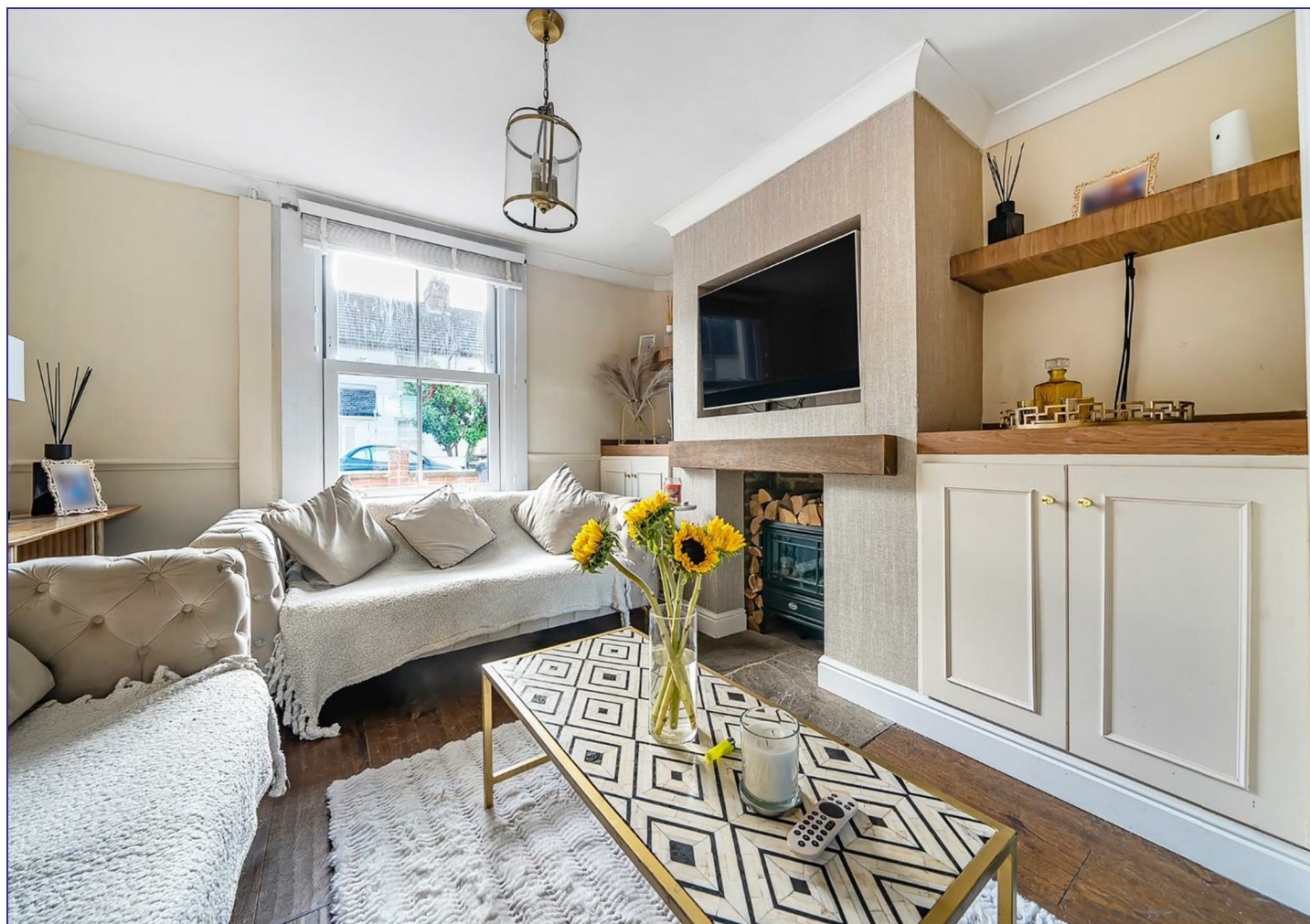
Price £280,000

**GOULD  
HARRISON**



A very well presented terraced home, ideally positioned for access to Ashford town centre and mainline station connecting to London in 37 minutes. The pleasantly appointed accommodation comprises an entrance hall, sitting/dining room, kitchen, ground floor four piece bathroom/WC and three bedrooms.

The rear garden enjoys a sunny aspect and further benefits include gas central heating, double glazing and off road parking.



### Casement Door

Through to:

### Entrance Hall

Radiator, stairs to first floor.

### Sitting/Dining Room 21'9 x 11'3 (6.63m x 3.43m)

Double aspect double glazed bay window to front and window to rear, radiator, fireplace with oak mantle, television aerial point, under stairs storage.

### Kitchen 9'1 x 7'10 (2.77m x 2.39m)

Range of fitted wall and base units, four ring gas hob with stainless steel surround, extractor hood and lighting above, electric oven, stainless steel sink with mixer and tap drainer unit. door to:

### Rear Lobby

Door to:

### Bathroom/WC 8'8 x 9'1 (2.64m x 2.77m)

Freestanding Victorian style roll top bath with mixer tap, raised shower cubicle housing mains shower with tiled

surround and glazed screen, frosted double glazed window to rear, low level WC, wall mounted hand basin, radiator, tiled floor covering, extractor fan, downlighters.

### First Floor:

### Landing

### Bedroom One 13'2 x 10'6 (4.01m x 3.20m)

Double glazed window to front, radiator, fitted bedroom furniture, cupboard going back over the stairs.

### Bedroom Two 10'9 x 8'11 (3.28m x 2.72m)

Double glazed window to rear, radiator.

### Bedroom Three 9'5 x 8'6 (2.87m x 2.59m)

Double glazed window to rear, radiator.

### Rear Garden

Panel enclosed fencing, rear gated access, parking for one car at the rear.

### Tenure

Freehold.

### Services

All main services are connected.

### Council Tax

Ashford Borough Council Band: B.

