



29 Riversdale Road, Ashford, Kent, TN23 7TP

Price £335,000

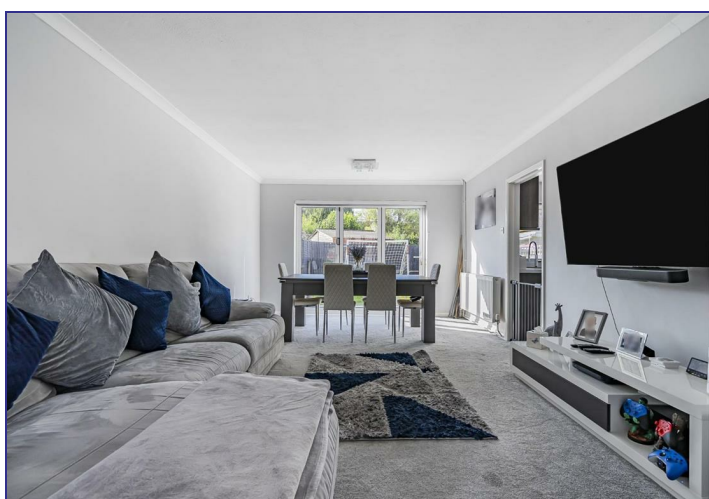
**GOULD
HARRISON**

A most pleasantly appointed end of terrace home which has undergone significant improvements over recent years.

The spacious accommodation comprises an entrance hall, family room, 24ft sitting/dining room, modern fitted kitchen, three double bedrooms, en suite and family bathroom/WC.

A tarmac driveway provides off road parking for two cars whilst a delightfully enclosed garden can be found to the rear which enjoys a sunny aspect, double glazing and gas central heating are further benefits of note.

Ashford town centre and mainline station are only a short walk away as are many local shops, leisure facilities and schools making this an ideal location for families and professionals alike.



UPVC Casement Door:

Through to:

Entrance Hall

Stairs to first floor, hardwood flooring, radiator, doors to :

Family Room 13'6 x 8'6 (4.11m x 2.59m)

Double glazed window to front, radiator.

Sitting/Dining Room 24'1 x 11'11 (7.34m x 3.63m)

Double glazed bi-folding doors opening to the rear patio, radiator, TV aerial point.

Kitchen 10'10 x 10'8 (3.30m x 3.25m)

A modern fitted kitchen with a generous range of wall and base units, composite sink with chrome mixer tap, integrated dishwasher, washing machine and tumble dryer, four ring gas hob with extractor hood and lighting above, electric oven, fridge/freezer, under stairs storage cupboard, large larder style cupboard.

First Floor:

Landing

Loft access, radiator, airing cupboard with radiator, doors to:

Bedroom One 9'11 x 14'2 (3.02m x 4.32m)

Double glazed window to rear, radiator, electric ceiling fan.

En Suite Shower Room

With folding door, walk in shower housing mains shower with glazed screen, low level WC, pedestal hand basin with chrome mixer tap and localised tiling, chrome heated towel rail, extractor fan.

Bedroom Two 12'1 x 9'6 (3.68m x 2.90m)

Double glazed window to front, radiator, built in wardrobes.

Bedroom Three 12'11 x 7'7 (3.94m x 2.31m)

Double glazed window to front, radiator.

Bathroom 7'11 x 7'9 (2.41m x 2.36m)

Contemporary fitted white suite comprising panelled bath with mains shower over and glazed screen, wash basin with storage beneath and chrome mixer tap, low level WC, chrome heated towel rail, frosted double glazed window to rear, extractor fan.

Outside

Mainly laid to lawn with paved patio seating area, outside cold water tap, power points, lighting, wood built shed.

Services

All main services are connected.

Tenure

Freehold.

Council Tax

Ashford Borough Council Band: C.

