



## 35 Bishopswood

Kingsnorth, TN23 3RD

Price £290,000

A very well appointed terraced home arranged over three floors on the popular Park Farm development. The property comprises an entrance hall, sitting room, modern kitchen, three bedrooms, en suite and family bathroom/WC.

The rear garden is pleasantly enclosed with further benefits including gas central heating, double glazing and allocated parking.

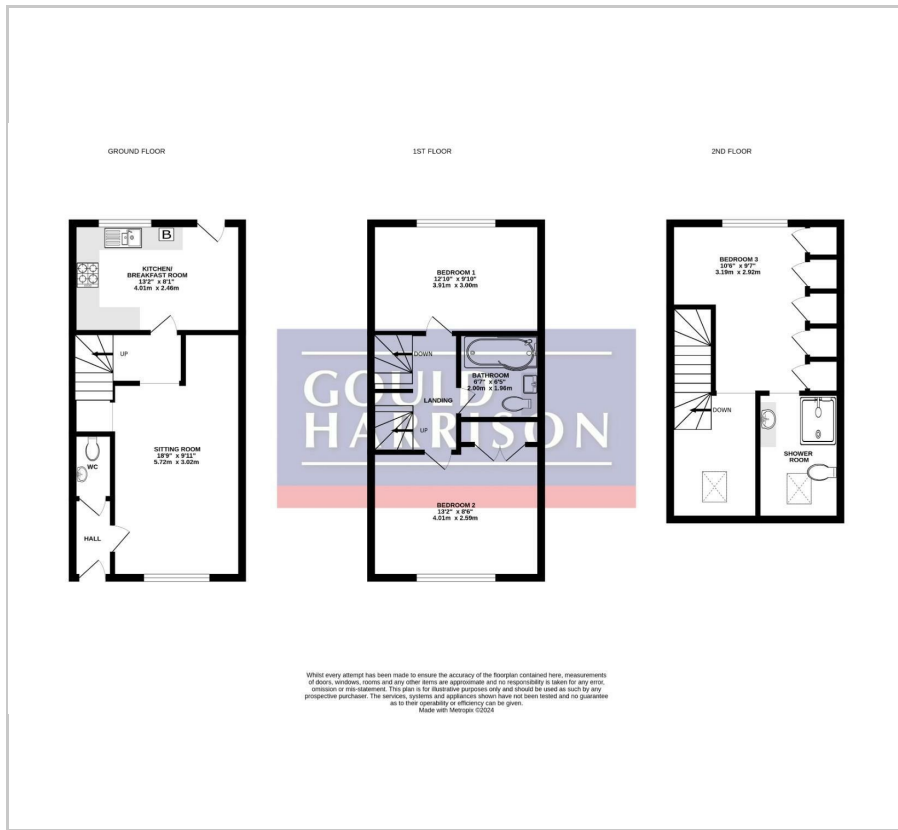
Highly regarded local schools are within easy reach as are shops and transport links.

### Viewing

Please contact our Ashford Office on 01233 646411 if you wish to arrange a viewing appointment for this property or require further information.

- MODERN TERRACED HOUSE
- ARRANGED OVER THREE FLOORS
- THREE BEDROOMS
- EN SUITE & FAMILY BATHROOM
- ENCLOSED REAR GARDEN
- ALLOCATED PARKING
- CLOSE TO LOCAL SCHOOLS & SHOPS
- GAS CENTRAL HEATING
- DOUBLE GLAZING

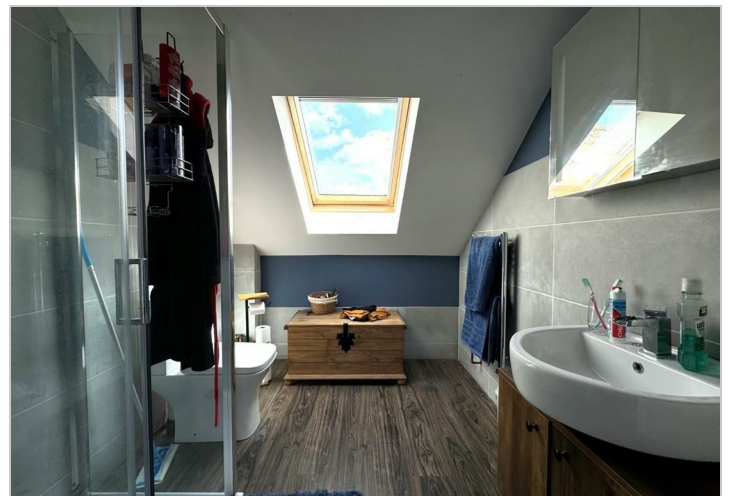
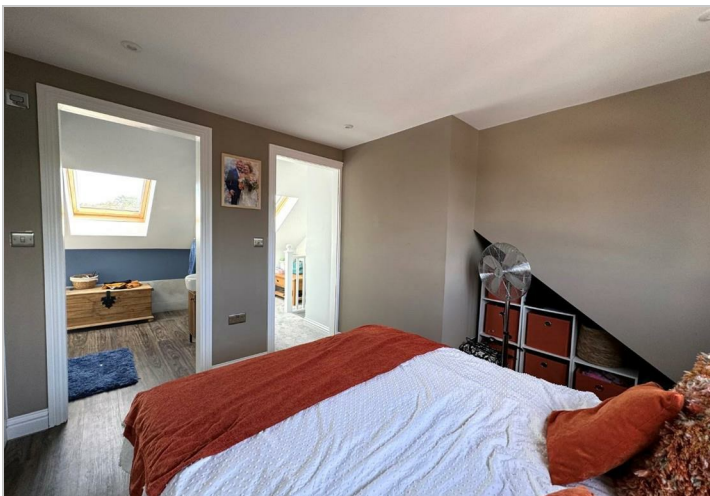
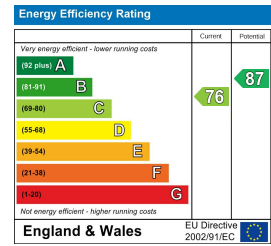
# Floor Plan



# Area Map



# Energy Efficiency Graph



These particulars, whilst believed to be accurate are set out as a general outline only for guidance and do not constitute any part of an offer or contract. Intending purchasers should not rely on them as statements of representation of fact, but must satisfy themselves by inspection or otherwise as to their accuracy. No person in this firm's employment has the authority to make or give any representation or warranty in respect of the property.