



## 9 Jarmans Field

Wye, TN25 5AQ

Price £265,000

Within walking distance of the centre of one of Kent's most delightful villages. This purpose-built retirement (over 60's) bungalow has a particularly pleasing setting, away from passing traffic and overlooking a landscaped open space. The accommodation includes a spacious entrance hall, a nicely proportioned sitting room with a classical style fire surround, fitted kitchen, two bedrooms and wet room/WC. Beautifully maintained gardens surround the property with further benefits including gas central heating, double glazing and residents parking.

NO ONWARD CHAIN

### Viewing

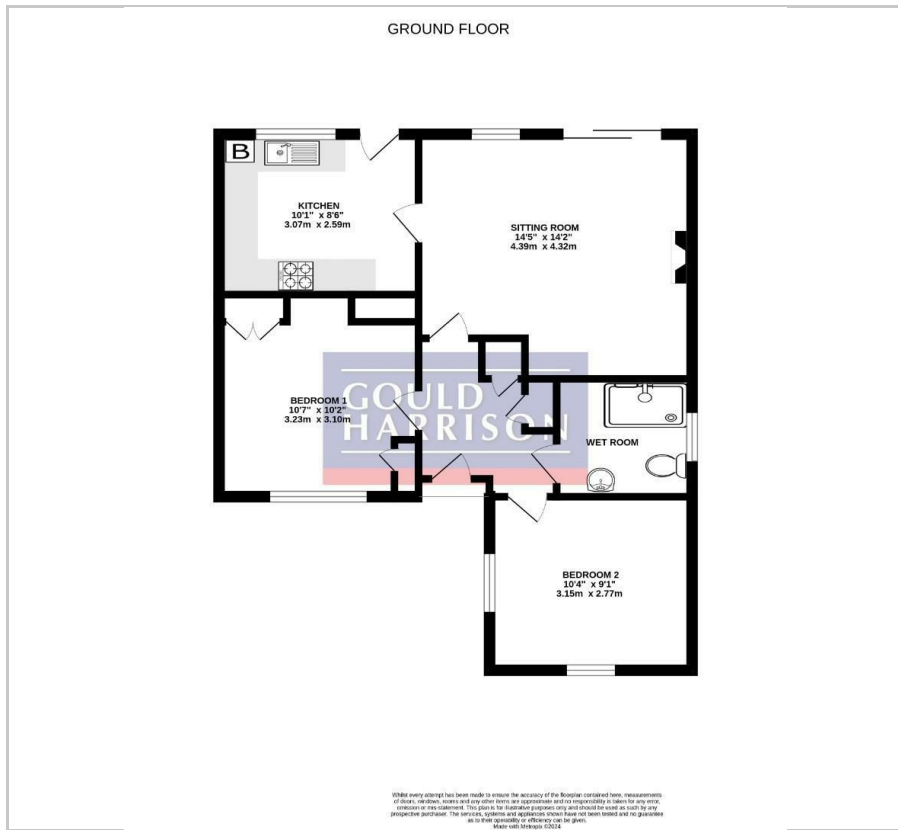
Please contact our Ashford Office on 01233 646411 if you wish to arrange a viewing appointment for this property or require further information.

- PLEASANTLY APPOINTED BUNGALOW
- OVER 60'S
- TWO BEDROOMS
- WET ROOM/WC
- GAS CENTRAL HEATING
- DOUBLE GLAZING
- WELL PRESENTED THROUGHOUT
- SOUGHT AFTER VILLAGE LOCATION
- EPC RATING - D
- NO ONWARD CHAIN





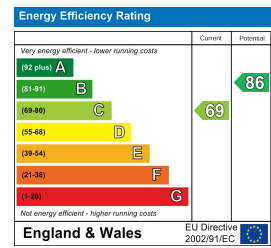
# Floor Plan



# Area Map



# Energy Efficiency Graph



These particulars, whilst believed to be accurate are set out as a general outline only for guidance and do not constitute any part of an offer or contract. Intending purchasers should not rely on them as statements of representation of fact, but must satisfy themselves by inspection or otherwise as to their accuracy. No person in this firm's employment has the authority to make or give any representation or warranty in respect of the property.