



106 Lower Queens Road

, Ashford, TN24 8HE

£1,250 Per Month

A spacious and newly renovated maisonette, just a short walk from Ashford town centre and mainline station.

Set on the first floor, this lovely home comprises an entrance hall, sitting room, brand new kitchen and bathroom along with two double bedrooms.

Having just undergone refurbishment the property is freshly painted with new flooring, carpets, gas central heating and garden to rear.

Available: Now

EPC - C (76)

Council Tax Band - B

Deposit -£1,442.00

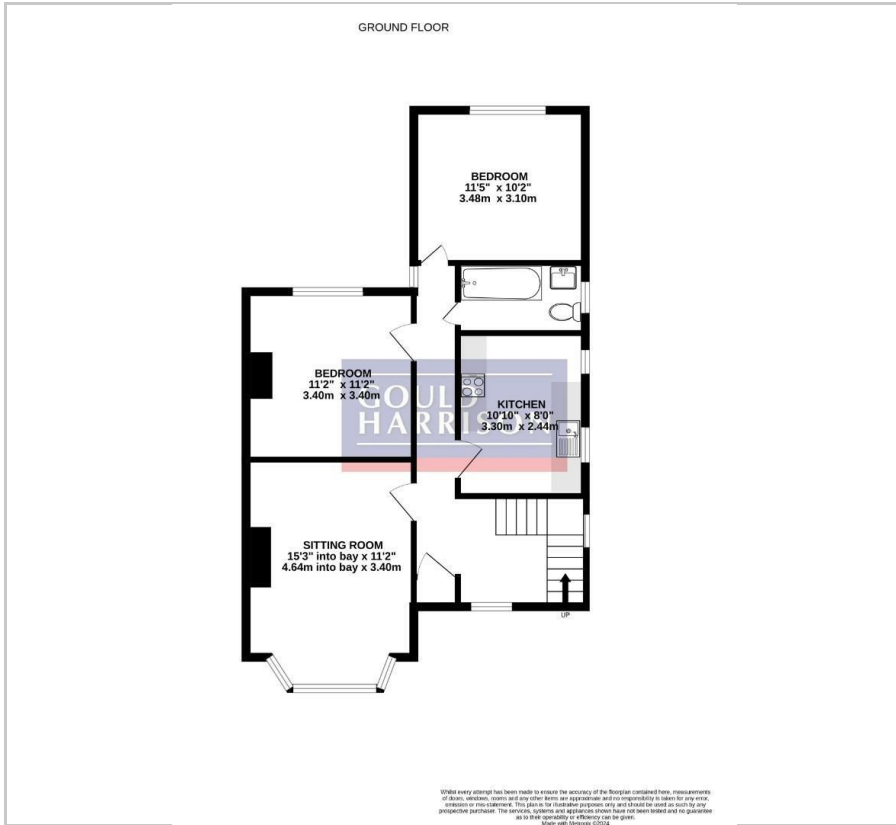
Viewing

Please contact our Ashford Office on 01233 646411 if you wish to arrange a viewing appointment for this property or require further information.

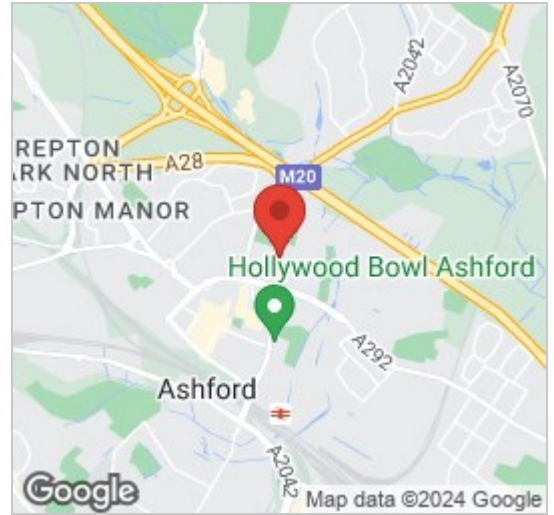
- SPACIOUS MAISONETTE
- NEWLY RENOVATED
- FIRST FLOOR
- TWO DOUBLE BEDROOMS
- BRAND NEW KITCHEN & BATHROOM
- SHORT WALK FROM TOWN & STATION
- GAS CENTRAL HEATING
- DEPOSIT £1,442.00
- AVAILABLE NOW
- EPC - C (76)



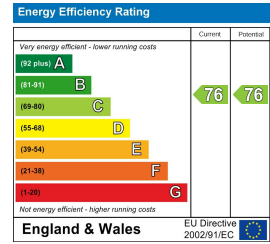
Floor Plan



Area Map



Energy Efficiency Graph



These particulars, whilst believed to be accurate are set out as a general outline only for guidance and do not constitute any part of an offer or contract. Intending purchasers should not rely on them as statements of representation of fact, but must satisfy themselves by inspection or otherwise as to their accuracy. No person in this firm's employment has the authority to make or give any representation or warranty in respect of the property.

1 Middle Row, Ashford, Kent, TN24 8SQ

Tel: 01233 646411 Email: sales@gouldharrison.co.uk