



## 7 Holt Close

Ashford, TN23 5HZ

Price £190,000

A spacious, modern apartment in the popular Singleton Hill area offered for sale with no onward chain.

The accommodation enjoys a light and airy feel and comprises an entrance hall, contemporary open plan kitchen and living space, two bedrooms, en suite and family bathroom/WC.

Allocated parking and visitors spaces can be found to the rear with local shops, schools and transport links easily accessible.

Balance of a 200 year lease from 2000.

Ground Rent £200 per annum

Management Charge £2,488 per annum

- SPACIOUS MODERN APARTMENT
- FIRST FLOOR
- TWO BEDROOMS
- EN SUITE & FAMILY BATHROOM
- ALLOCATED PARKING
- OPEN PLAN KITCHEN/LIVING SPACE
- BALANCE OF 200 YEAR LEASE FROM 2000
- GROUND RENT £200 PER ANNUM
- ANNUAL MANAGEMENT CHARGE £2,488

### Viewing

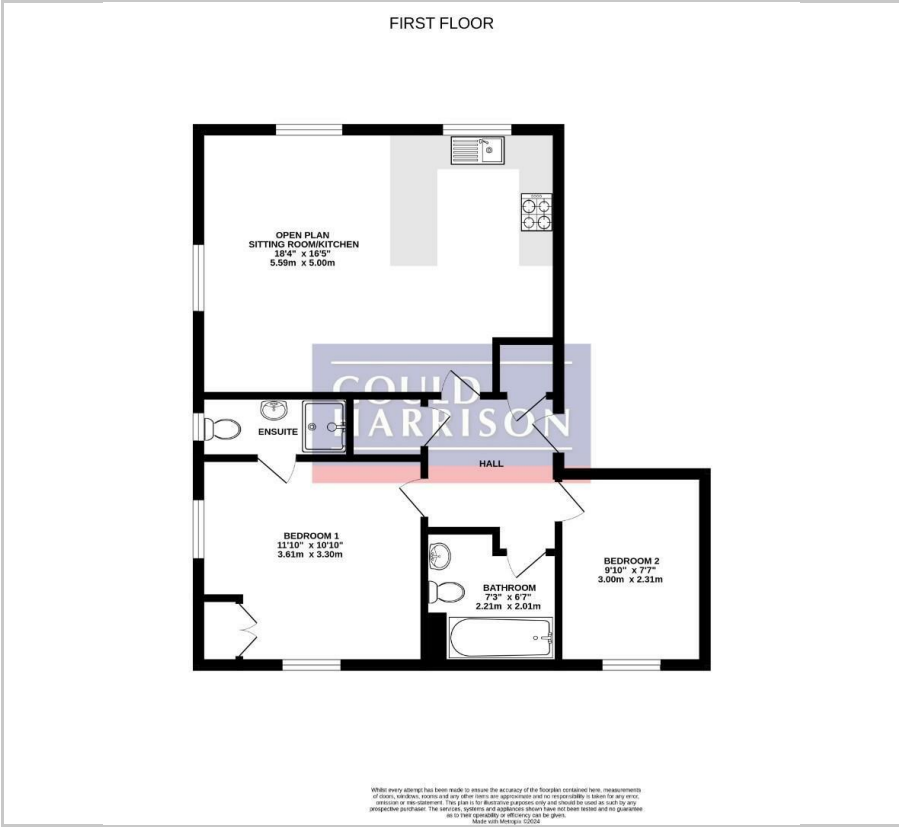
Please contact our Ashford Office on 01233 646411 if you wish to arrange a viewing appointment for this property or require further information.



C



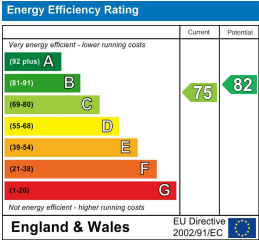
Floor Plan



Area Map



Energy Efficiency Graph



These particulars, whilst believed to be accurate are set out as a general outline only for guidance and do not constitute any part of an offer or contract. Intending purchasers should not rely on them as statements of representation of fact, but must satisfy themselves by inspection or otherwise as to their accuracy. No person in this firm's employment has the authority to make or give any representation or warranty in respect of the property.