



## 22 Grasmere Road

Kennington, TN24 9BE

Price £325,000

A spacious semi detached bungalow in a popular residential location, available for sale with no onward chain.

The property comprises an entrance hall, sitting room, kitchen, three bedrooms and shower room/WC.

A pleasant corner plot provides gardens to three sides with further benefits including gas central heating, double glazing, garage and driveway.

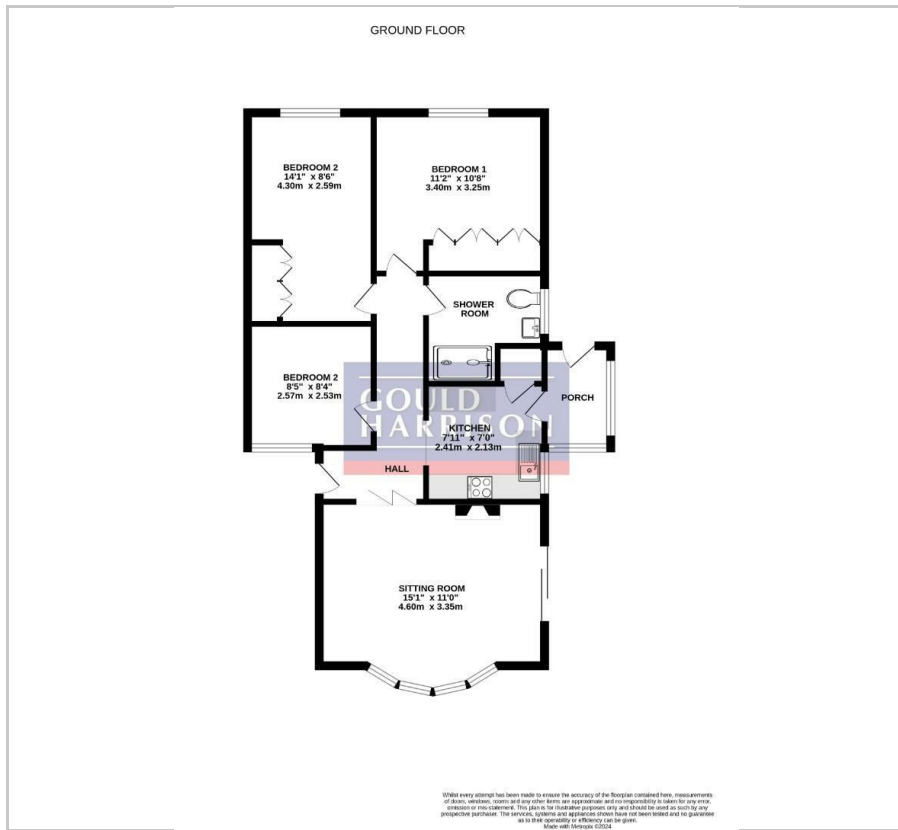
- SEMI DETACHED BUNGALOW
- CORNER PLOT POSITION
- THREE BEDROOMS
- GARAGE & DRIVEWAY
- SHOWER ROOM/WC
- DOUBLE GLAZING
- NO ONWARD CHAIN

### Viewing

Please contact our Ashford Office on 01233 646411 if you wish to arrange a viewing appointment for this property or require further information.



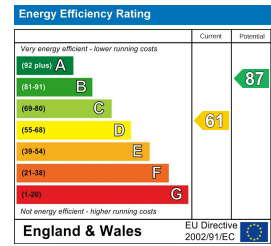
# Floor Plan



# Area Map



# Energy Efficiency Graph



These particulars, whilst believed to be accurate are set out as a general outline only for guidance and do not constitute any part of an offer or contract. Intending purchasers should not rely on them as statements of representation of fact, but must satisfy themselves by inspection or otherwise as to their accuracy. No person in this firm's employment has the authority to make or give any representation or warranty in respect of the property.