



## Heritage Road

Kingsnorth, Ashford, TN25 7LF

Price £250,000

An immaculately presented maisonette built by Persimmon circa 2022 with the benefit of a 999 year lease.

This spacious home comprises a private entrance door opening to the long hallway, open plan kitchen/living space with private terrace, two double bedrooms, en suite and large family bathroom. The property also benefits from gas fired central heating, double glazing and allocated parking for two cars.

EPC Rating - B (83)

Annual Management Charge £1,100.

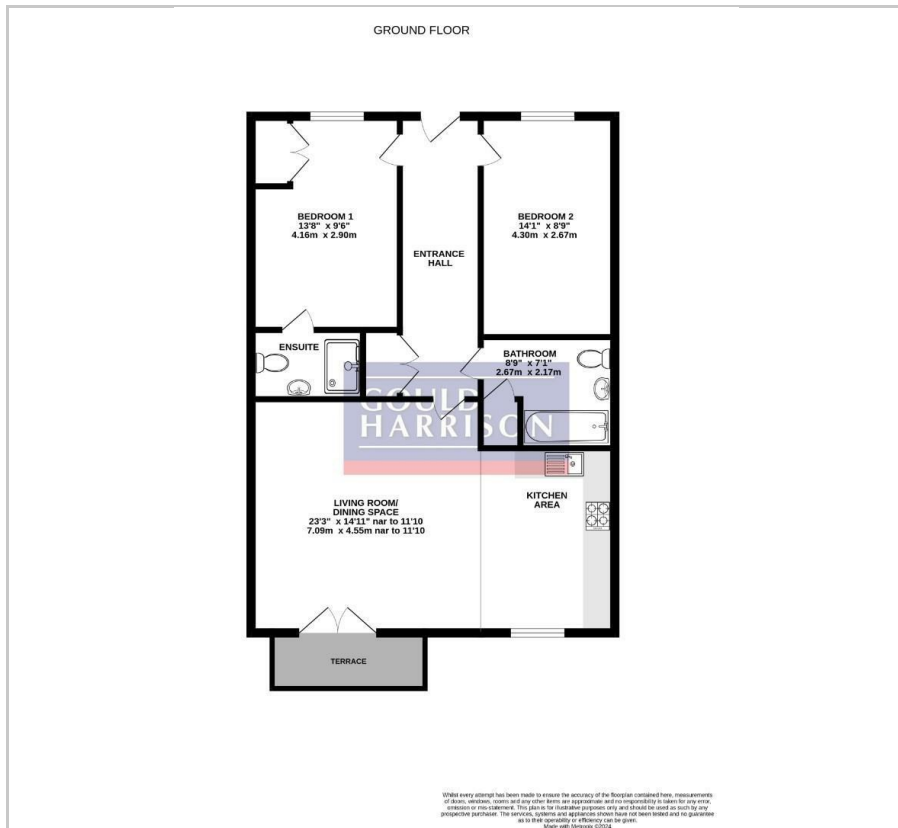
### Viewing

Please contact our Ashford Office on 01233 646411 if you wish to arrange a viewing appointment for this property or require further information.

- MODERN MAISONETTE
- TWO DOUBLE BEDROOMS
- EN SUITE AND LARGE FAMILY BATHROOM
- OPEN PLAN KITCHEN/LIVING SPACE
- PRIVATE TERRACE
- ALLOCATED PARKING FOR TWO CARS
- 999 YEAR LEASE
- MANAGEMENT CHARGE £1,100 PER YEAR
- EPC RATING - B (83)



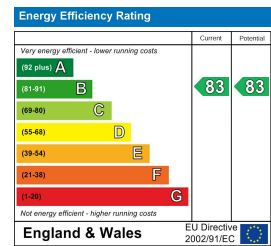
# Floor Plan



# Area Map



# Energy Efficiency Graph



These particulars, whilst believed to be accurate are set out as a general outline only for guidance and do not constitute any part of an offer or contract. Intending purchasers should not rely on them as statements of representation of fact, but must satisfy themselves by inspection or otherwise as to their accuracy. No person in this firm's employment has the authority to make or give any representation or warranty in respect of the property.