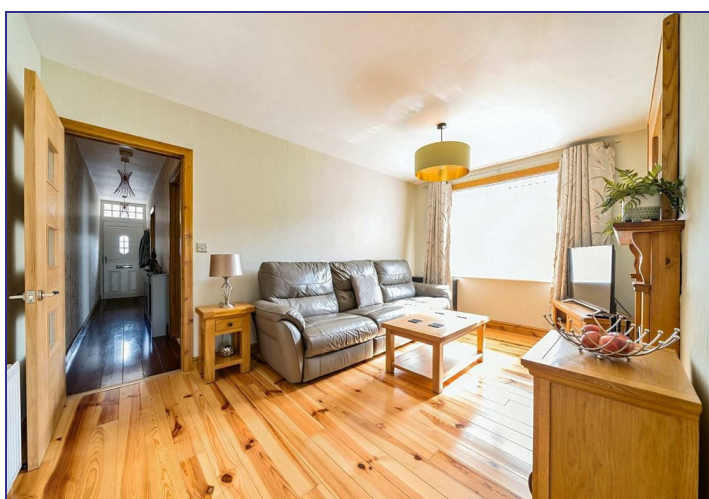


43 Bond Road, Ashford, Kent, TN23 7UG

Price £325,000

**GOULD
HARRISON**

Beautifully presented 1930's built detached bungalow with two double bedrooms, close to Victoria Park and walking distance of the mainline station and Ashford town centre. The 90ft rear garden enjoys a sunny southerly aspect, many fine period features with fireplaces, pine flooring and modern internal doors.



Panelled Front Door to:

Hallway

Doors to:

Lounge 14'9 x 9'4 (4.50m x 2.84m)

Wood burning stove set in recessed fireplace with classical pine surround, door to:

Kitchen 11'5 x 9'8 (3.48m x 2.95m)

With UPVC double glazed patio doors to rear, stainless steel sink unit, range of worktops with

grey fronted drawers and cupboards under, space and plumbing for appliances, tiled floor, wall mounted Gloworm gas boiler for central heating and domestic hot water.

Bedroom One 11'5 x 10'11 (3.48m x 3.33m)

Plus bay window to front, open recessed fireplace.

Bedroom Two 11'5 x 9'0 (3.48m x 2.74m)

Window to side.

Luxury Bathroom

With local wall tiling and tiled floor, panelled bath, circular basin with drawers under, low level WC, towel rail, window to side.

Outside

Picket fence to front, laid to pebbles for ease of maintenance, side access to nicely enclosed south facing rear garden, being about 90ft long with terrace, lawn, borders and trees.

Tenure

Freehold.

Services

All main services are connected.

Council Tax

Ashford Borough Council Band: C.

