

146 The Street, Willesborough, Ashford, TN24 0NB

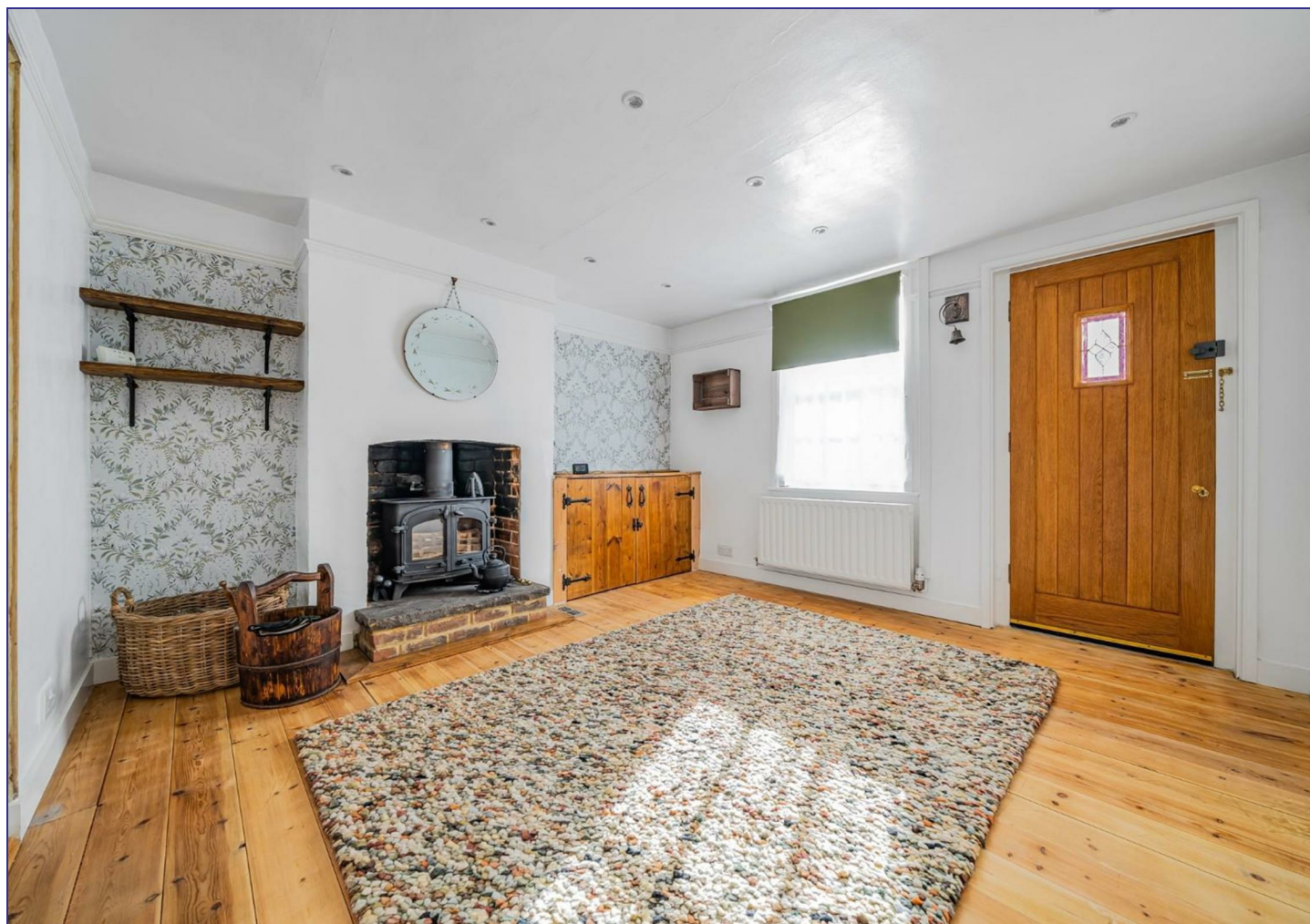
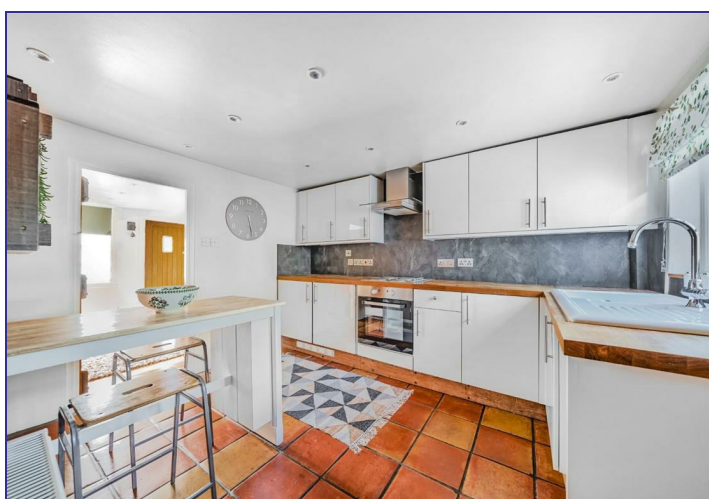
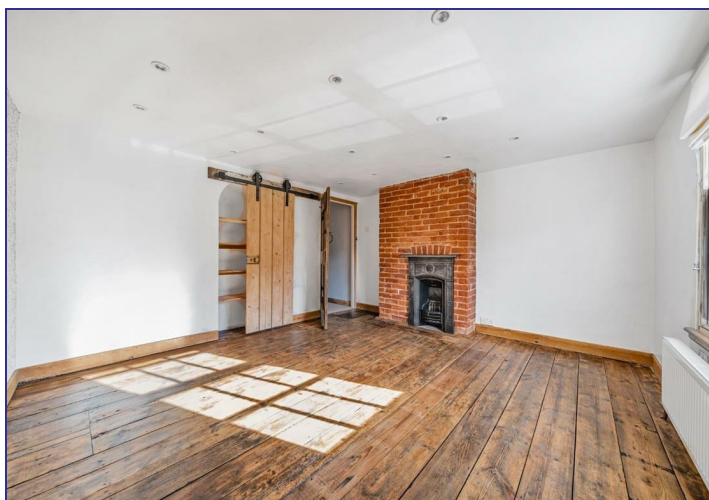
Price £330,000

GOULD  
HARRISON

A beautiful Grade II Listed cottage with lovely period features, close to local amenities and transport links.

The most pleasantly presented accommodation which is arranged over three floors has been improved by the present owners with original stripped pine floors, upgraded electrics and central heating system. Beautiful oak panelled doors.

The accommodation comprises cosy sitting room with wood burning stove, kitchen/dining room with fitted appliances, two bedrooms, bathroom and lovely cottage style garden.



**Sitting Room 11'3 into chimney recess x 11'9 (3.43m into chimney recess x 3.58m)**

A lovely, cosy sitting room accessed via a solid oak casement door, wood burning stove, picture rail, sash window to front, pine flooring, radiator, door through to:

**Kitchen/Dining Room 11'9 x 11'2 (3.58m x 3.40m)**

Generous range of fitted units and storage, solid oak worktops, 1 1/2 bowl sink with mixer tap and drainer unit, four ring electric hob with stainless steel surround, extractor hood and lighting above, electric oven and grill, integrated fridge/freezer, plumbing and space for dishwasher, under unit lighting, stairs to first floor with larder style cupboard under, multi panel double glazed window to rear, radiator.

**Utility/Boot Room 6'6 x 6'1 (1.98m x 1.85m)**

Tiled flooring, plumbing and space for washing machine, radiator, wooden casement door to rear garden.

**First Floor:**

**Landing**

Stairs to second floor, doors to:

**Bedroom One 10'11 x 11'6 (3.33m x 3.51m)**

Sash window to front, open brick built fireplace, stripped pine floor, built in wardrobe cupboard.

**Bathroom 8'9 x 6'5 (2.67m x 1.96m)**

Casement window to rear, panelled bath with mixer tap, mains

shower over and glazed screen, tiled surround, low level WC, porcelain wash hand basin with cupboard under, heated towel radiator, large storage cupboard housing gas boiler.

**Second Floor:**

**Bedroom Two 12'3 x 9'5 into eaves (3.73m x 2.87m into eaves)**

Under eaves storage space, built in cupboard, stripped pine floor, window to side, radiator.

**Garden**

Mainly laid to lawn with panel enclosed fencing, generous range of flowers, shrubs and trees, raised decked seating area, summer house, wood built shed, wood store, outside cold water tap and electric power point, extends to around 80ft.

**Tenure**

Freehold.

TR 04 SW 3/269 5344

THE STREET (North East Side) Willesborough No 146 No 148 No 150

(Formerly listed as THE STREET (North East Side) Willesborough No 146 No 148)

II

Early C19. 2 storeys. Ground floor red brick. 1st floor tile hung. 3 sashes in all with glazing bars intact. Simple door cases, No 146 having cornice and brackets.

Listing NGR: TR0408441650

**Services**

All main services are connected.

**Council Tax**

Ashford Borough Council Tax Band: B.

