



5 Greystones

Willesborough, Ashford, TN24 0FR

£995 Per Month

Ground floor apartment positioned in a superb location offering great access to all major transport links, William Harvey hospital and Ashford town centre.

The property comprises; open place lounge/kitchen with built in appliances, bedroom one with en-suite and wardrobe, second double bedroom with wardrobe, modern bathroom suite with shower over bath. The property also benefits from double glazing and allocated parking.

Security deposit £1148.00

Available Now

Sorry but no pets or smokers accepted

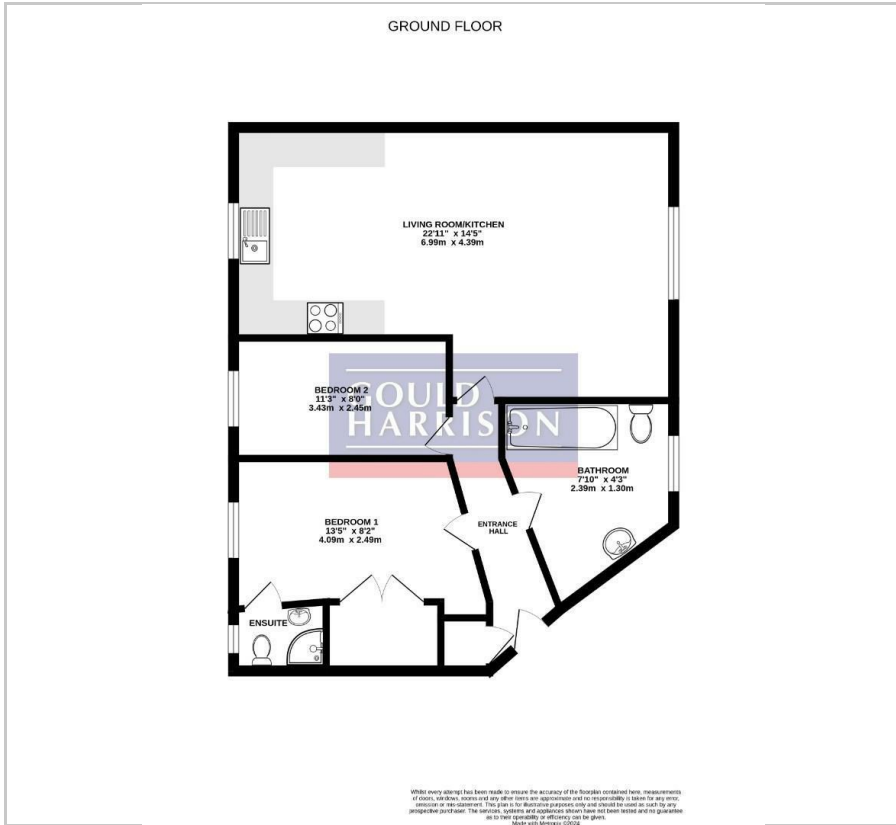
Viewing

Please contact our Ashford Office on 01233 646411 if you wish to arrange a viewing appointment for this property or require further information.

- ****FULLY BOOKED FOR VIEWINGS NOW****
- EN-SUITE
- ALLOCATED PARKING
- AVAILABLE NOW
- EPC RATING C
- COUNCIL TAX BAND B
- TWO BEDROOM GROUND FLOOR APARTMENT



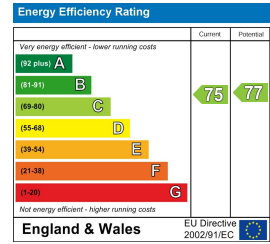
Floor Plan



Area Map



Energy Efficiency Graph



These particulars, whilst believed to be accurate are set out as a general outline only for guidance and do not constitute any part of an offer or contract. Intending purchasers should not rely on them as statements of representation of fact, but must satisfy themselves by inspection or otherwise as to their accuracy. No person in this firm's employment has the authority to make or give any representation or warranty in respect of the property.

1 Middle Row, Ashford, Kent, TN24 8SQ

Tel: 01233 646411 Email: sales@gouldharrison.co.uk