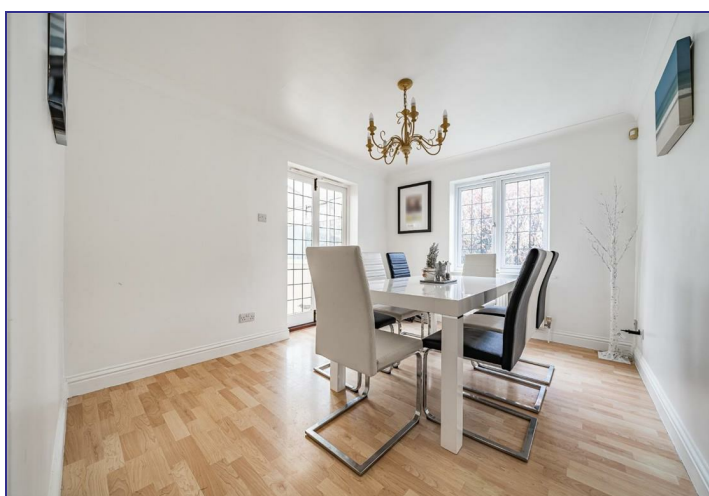


North Down House, 3 The Anvils, Lympne, Hythe, CT21 4PF  
**Offers In The Region Of £645,000**

**GOULD  
HARRISON**

Spacious detached house with four double bedrooms and large garden with beautiful far reaching views. Traditionally constructed about 25 years ago with double glazing and central heating. Fabulous views over farmland to the North Downs and set in a lovely rural area. Some updating required.



**Panelled Front Door to:**

**Hallway**

Storage cupboard, doors to:

**Cloakroom**

White low level WC and wash hand basin.

**Inner Hallway**

Staircase to first floor with cupboard under.

**Lounge 19'6 x 13'0 (5.94m x 3.96m)**

Glass fronted wood burning stove, UPVC double glazed casement doors to:

**Dining Room 11'10 x 9'8 (3.61m x 2.95m)**

Double doors to:

**Conservatory 9'10 x 9'10 (3.00m x 3.00m)**

With UPVC double glazed casement doors to garden.

**Kitchen 11'10 x 9'6 (3.61m x 2.90m)**

Double aspect with bay window, resin 1 1/2 bowl sink unit, range of worktops with oak fronted drawers and cupboards under, wall cupboards, four ring ceramic hob with extractor above, double oven, space and plumbing for appliances.

**First Floor:**

**Galleried Landing**

**Bedroom One 13'1 x 10'8 (3.99m x 3.25m)**

UPVC double glazed casement doors to Balcony.

**En Suite Shower Room**

Fully tiled walls and floor, glass fronted shower cubicle, pedestal wash hand basin and low level WC, airing cupboard.

**Bedroom Two 13'1 x 8'5 (3.99m x 2.57m)**

Double aspect with far reaching views.

**Bedroom Three 10'8 x 9'6 (3.25m x 2.90m)**

Double aspect.

**Bedroom Four 12'0 x 9'7 (3.66m x 2.92m)**

**Bathroom 8'1 x 6'5 (2.46m x 1.96m)**

Jacuzzi bath, pedestal wash hand basin and low level WC, fully tiled walls and floor.

**Outside**

The garden has established hedges, paved terrace and lawn. In all over a quarter of an acre. Driveway and parking space to:

**Integral Garage**

With electric light and power, oil fired boiler for central heating and domestic hot water.

**Services**

Mains water and electricity. Private drainage. No mains gas available.

**Council Tax**

Folkestone & Hythe District Council Band: F.

