



5 Manor House Drive

Kingsnorth, Ashford, TN23 3LP

Offers In Excess Of £325,000

A well presented link detached home in the popular Park Farm area, available for sale with no onward chain.

The property comprises an entrance hall, sitting room, kitchen/dining room, conservatory, three bedrooms and modern bathroom/WC.

The enclosed rear garden enjoys a southerly aspect with the property also benefitting from gas central heating, double glazing and off road parking.

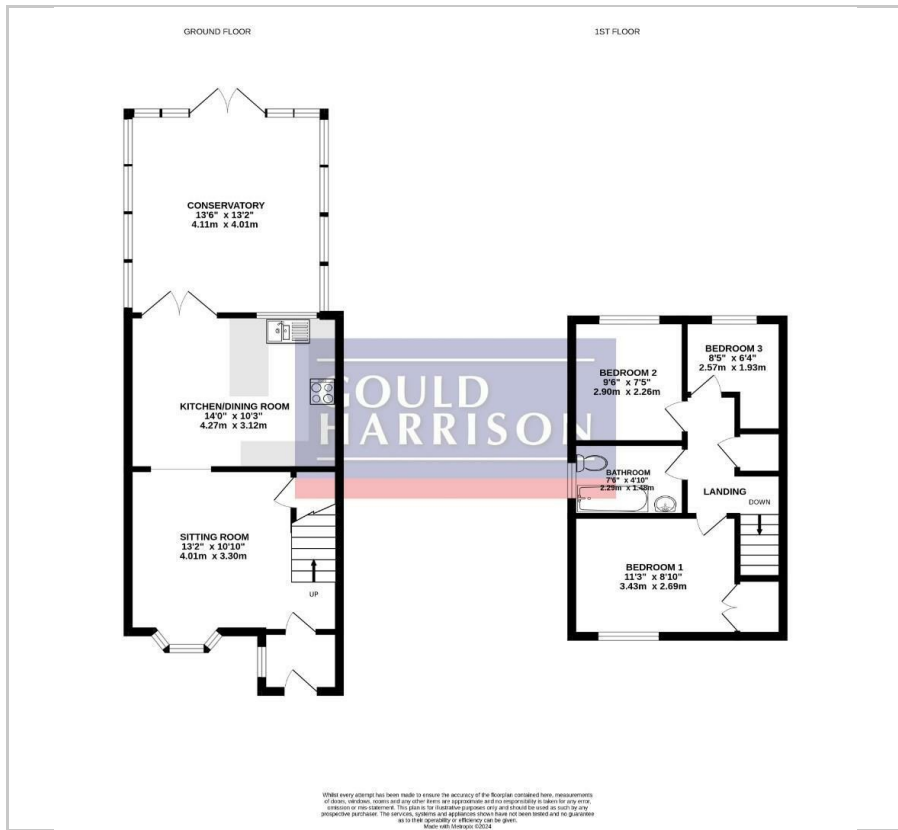
Viewing

Please contact our Ashford Office on 01233 646411 if you wish to arrange a viewing appointment for this property or require further information.

- LINK DETACHED HOUSE
- THREE BEDROOMS
- KITCHEN/DINING ROOM
- CONSERVATORY
- ENCLOSED SOUTHERLY FACING REAR GARDEN
- OFF ROAD PARKING
- MODERN BATHROOM SUITE
- GAS CENTRAL HEATING
- DOUBLE GLAZING
- NO ONWARD CHAIN



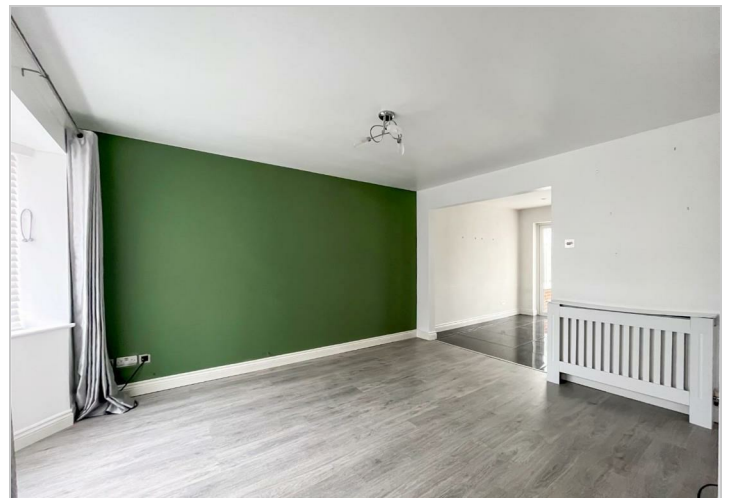
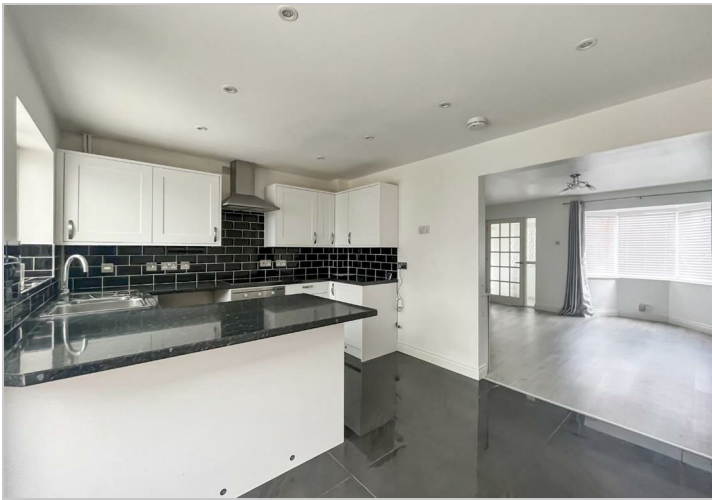
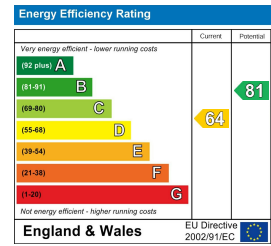
Floor Plan



Area Map



Energy Efficiency Graph



These particulars, whilst believed to be accurate are set out as a general outline only for guidance and do not constitute any part of an offer or contract. Intending purchasers should not rely on them as statements of representation of fact, but must satisfy themselves by inspection or otherwise as to their accuracy. No person in this firm's employment has the authority to make or give any representation or warranty in respect of the property.